

BARRINGTON STAGE COMPANY

ALAN PAUL, ARTISTIC DIRECTOR

AND



AND

**Jadwiga and Donald Brown • Janet and John Egelhofer • Mike and David Faust
Olivia Georgia and Steve Oakes • Colin Mathews • Linda and Robert Noonan
Diane and Arthur Provenz • Marian and Marshall Raser • Linda and Frank Russell
Judy and Bruce Grinnell • Nancy McIntire • Jane and Win Stuebner**

PRESENT

12TH ANNUAL



PLAYS BY

**Brent Askari Michael Brady Michael Burgan Allie Costa Deirdre Girard
Arlene Jaffe Stephen Kaplan Diana Metzger Jim Moss Robert Weibezahl**

FEATURING

**Skyler Gallun Sky Marie Matt Neely
Camille Upshaw Peggy Pharr Wilson Robert Zukerman**

SCENIC DESIGNER

Marcus Kearns

COSTUME DESIGNER

Peggy Walsh

LIGHTING DESIGNER

Lucas Pawelski

SOUND DESIGNER

Eric Shimelonis

PRODUCTION STAGE MANAGER

Hope Rose Kelly

ASSISTANT STAGE MANAGER

Merit Glover

CASTING

**Pat McCorkle, CSA;
Rebecca Weiss, CSA**

BERKSHIRE PRESS REPRESENTATIVE

Charlie Siedenburg

NATIONAL PRESS REPRESENTATIVES

The Press Room

FOUNDING ARTISTIC DIRECTOR

Julianne Boyd

DIRECTED BY

Alan Paul Matthew Penn

ST. GERMAIN STAGE

AT THE SYDELLE AND LEE BLATT PERFORMING ARTS CENTER

FEBRUARY 16–MARCH 5, 2023



Mass
Cultural
Council



SHUBERT
FOUNDATION

THE 10 X 10 PLAYERS

Skyler Gallun* Sky Marie* Matt Neely*
Camille Upshaw* Peggy Pharr Wilson* Robert Zukerman*

STAFF

Production Stage Manager..... Hope Rose Kelly*
Assistant Stage Manager Merit Glover*
Lighting Supervisor..... Erika Johnson
Light Board & Sound Board Operator Marcus Kearns
Properties Coordinator Faith Boucher
Electrician..... KJ Lallatin
Stitcher Cal Murphy
Wardrobe Supervisor Caitie Martin



*Actors and Stage Managers are
members of Actors' Equity Association.



The Director is a member of the
STAGE DIRECTORS AND CHOREOGRAPHERS
SOCIETY, a national theatrical labor union.

SPECIAL THANKS

Hannah Katz, Leila Teitelman, Allyson Broyles,
Ben Knauth and the Pittsfield All-Stars

THE 10 X 10 PLAYS

Casts in order of appearance.

Opening BY Matt Neely

MUSICAL ACCOMPANIMENT ARRANGED & PERFORMED BY Eric Shimelonis

DIRECTED BY Alan Paul

Performed by the 10x10 Players

A Date BY Diana Metzger

DIRECTED BY Alan Paul

Mr. Collins Matt
Faith Sky
Jeff Skyler
Gladys Peggy

Right Field of Dreams BY Stephen Kaplan

DIRECTED BY Alan Paul

Tim Skyler
Coach Matt
Toni Stone Camille

Anything You Want BY Arlene Jaffe

DIRECTED BY Matthew Penn

Artist Robert
Student Sky

Gimme Shelter BY Robert Weibezahl

DIRECTED BY Alan Paul

Cody Skyler
Frances Peggy

Real Magic BY Brent Askari
DIRECTED BY Matthew Penn

Carl..... Matt
Marie Sky
Doug Skyler
Tammy..... Camille

~ INTERMISSION ~

The Moon Is Full of It BY Jim Moss
DIRECTED BY Matthew Penn

Tollak..... Matt
Huberta..... Camille

If I Go First BY Michael Brady
DIRECTED BY Matthew Penn

Harry..... Robert
Lizzy Peggy
Waiter Sky

Piece of Cake BY Allie Costa
DIRECTED BY Alan Paul

Maple..... Camille
Flynn..... Skyler
Tuss..... Peggy
Brendan..... Robert

The Haunting Package BY Deirdre Girard
DIRECTED BY Matthew Penn

Tom Skyler
Bethany..... Sky

All Aboard! BY Michael Burgan
DIRECTED BY Alan Paul

Neal..... Matt
Meitner..... Peggy
Dad Robert
Jenny..... Sky
Sheila..... Camille

ABOUT 10 X 10 UPSTREET ARTS FESTIVAL

10x10 is the Berkshires' first winter arts festival featuring new art, dance, music, theatre and more.

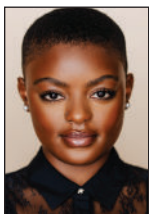
New theatre, art, comedy, dance, music and more in the middle of winter? You bet! The twelfth annual 10x10 Upstreet Arts Festival is February 16–26, 2023. From new theatre and art shows to comedy and spoken word, 10x10 warms up the Berkshires winter with hot new performances, art and more. More info: LovePittsfield.com

The festival is a collaborative effort spearheaded by Barrington Stage Company and the City of Pittsfield.

CAST



SKYLER GALLUN Off Broadway and New York theatre: *A Raisin in the Sun* (The Public), *Richard III* (The Public's Shakespeare in the Park); *Terezin* (Playwrights Horizons); *Macbeth, Romeo and Juliet* (Shakespeare in Bryant Park); *Henry VI: Part III, Twelfth Night, Cymbeline* (Shakespeare in the Parking Lot). Regional: *Lord of the Flies* (Denver Center), *Macbeth* (dir. Robert O'Hara, Denver Center). Film: *Ray Donovan: The Movie, Souvenirs*. TV: *Ray Donovan, Dickinson*. NYU BFA.



SKY MARIE is a little district with a big voice hailing from Washington, D.C. Since Sky can remember, the performing arts have had her heart. This fiery interest led her to attend Duke Ellington School of the Arts in Washington, D.C., then attended Mason Gross School of the Arts at Rutgers University. Her theatre credits include Titania in *A Midsummer Night's Dream* and Seneca/The Bishop in *Men on Boats*. Sky also happily played Cleopatra/Iris in *Antony and Cleopatra* at Shakespeare's Globe Theatre in London through Rutgers Theater Company. This year's 10x10 will be her Barrington Stage debut.



MATT NEELY is delighted to return to Barrington Stage! At BSC: *10x10* (10th year!), *The Crucible*. Off Broadway: *The Complete Works of William Shakespeare* (Abridged), *Hospital*. Off-Off Broadway: *The Trial, The Heart of a Dog, A Midsummer Night's Dream* (Puck), *The Furies, Twelfth Night* (Sebastian), *Sex and Other Collisions, Spare Change, Marriage, Unreal City*. When not acting, Matt is a Financial Advisor at Inspire Confidence Group in Williamstown, MA and teaches yoga. MFA in Acting from Carnegie Mellon University and The Moscow Art Theater, BS in Theater from Skidmore College. Love to Margo, Allie and Tommy!



CAMILLE UPSHAW is a proud Detroit native, NYC-based actress, entrepreneur, teaching artist and mentor. She made her Broadway Debut in the production of *Chicken & Biscuits* at Circle in the Square Theatre. She was also nominated for the Outstanding Lead Actress Award by the New York Innovative Theatre Foundation for her performance in *Letters in the Dirt*. TV/Film: Sundance Film Festival (*Still Here*), CBS (*Blue Bloods*), HBO Max (*That Damn Michael Che*), OXYGN (*Monster Preacher*) BFA: SUNY Purchase College. IG: @cmilliee



PEGGY PHARR WILSON Associate Artist. BSC: *Boca, America v 2.1, Gaslight, His Girl Friday, Guys and Dolls, The Crucible, To Kill A Mockingbird, Carousel, The Laramie Project: Epilogue, 10x10 Festival* ('12-'23, all 12 years!). Great Barrington Public: *Dad, Public Speaking 101*. BAT: *Doubt: Shakes & Co: Leap Year*. New York: *Six Women with Brain Death* (co-author, performed in Chicago, Dallas and Kansas City). Regional: 10 seasons with Creede Repertory Theatre in Colorado performing over 50 roles, including Mrs. Lovett in *Sweeney Todd* (best actress Ovation Award—Denver Post), *Shirley Valentine, Moon for the Misbegotten* and *Three Viewings*. Many regional including: Dallas Theatre Center, Theatre 3, Kansas City Rep, Unicorn, KC Lyric Opera, White River in Vermont and Rose Theatre in Chicago.



ROBERT ZUKERMAN BSC: *Boca, If I Forget, His Girl Friday, The Crucible, Ring Round the Moon, The Importance of Being Earnest, Thief River, The Collyer Brothers at Home*, and seven previous 10x10s. He's done two dozen plays Off Broadway at Irish Rep, the Atlantic, CSC, the Pearl, Theatre for a New Audience, etc. Regional credits include Arena Stage, Colorado Shakespeare Festival, Pittsburgh Public Theatre, Florida Rep, Gable Stage. He's performed in radio (*Coriolanus* for WBAI-FM in NYC), television (*Renaissance Gardening* for Rhode Island PBS), and film (*In Bed With Ulysses*), toured for the USO (USAF bases in Greenland), narrated for the Library of Congress, and served as Theatre Program Director for the New York State Council on the Arts.

PLAYWRIGHTS

BRENT ASKARI (*Real Magic*) BSC: *Andy Warhol In Iran* (commissioned by BSC), *American Underground* (Burman New Play Award Recipient), *Protecting the Innocent* (10x10 2021). The Berkshire Theatre Critics Association awarded *Andy Warhol In Iran* a "Berkie" for Best New Play of the 2022 season, and Northlight Stage in the Chicago area is currently producing the play. Brent is also the winner of the National New Play Network's Smith Prize for Political Theater for his play *The Refugees*. Brent has had other work developed and produced at venues including Geva Theatre Center, the PlayPenn Conference, Gulfshore Playhouse, Florida Rep, Melrose Theater and Palm Beach Dramaworks.

MICHAEL BRADY (*If I Go First*) BSC: *Pipeline* (10x10 2019). Also with BSC, served as playwright mentor for the Playwright Mentoring Project. Michael is an Associate Artist with Great Barrington Public Theatre where he manages Berkshire Voices, a workshop for local playwrights. Other plays include *To Gillian on Her 37th Birthday*, developed by Ensemble Studio Theatre in New York City and produced as a film by Sony Pictures; *Sara*, Equity Library Theatre at Lincoln Center; *Semper Fi*, Gloucester Stage Company; *Hard Time*, Main Street Stage, North Adams; *Two Bears Blinking*, New Theatre, Miami. Member of the Dramatists Guild and the Ensemble Studio Theatre.

MICHAEL BURGAN (*All Aboard!*), a freelance writer, has written more than 300 books for children and young adults. He studied playwriting at Emerson College and Chicago Dramatists. Credits include: Alternate selection, 1999 Samuel French Off-Off Broadway Short Play Festival (*GIGO*); Appetite Theatre 2005 Bruschetta Festival, Chicago (*Bob's Head* and *Toys in the Attic*); Theatres Against War 2005 Freedom Follies, New York (*Truth, Justice, and...*); 2011 Boston Theater Marathon (*Mirror Touch*); Connecticut Heritage Productions 2011 New Stories on Stage (*Rosary Peas*); 2018 Benchwarmers, Santa Fe Playhouse (*One More Coffee*). He lives in Santa Fe, New Mexico.

ALLIE COSTA (*Piece of Cake*) is an actor, writer, director and singer working in film, TV, theatre and voiceover. Her acting credits include *Spring Awakening, 90210, You Me & Her, Future Shock* and *Alien vs. Musical*. She's also appeared in commercials and podcasts, narrated audio books and documentaries, and lent her voice to video games and animated projects. Her work has been produced internationally, including the critically acclaimed *Two Girls, Don't Shoot the Messenger Pigeon, Music of the Mind, Boxes Are Magic* and *Can You Keep a Secret?* She's currently working on an original episodic series. Occasionally, she sleeps. alliecosta.com

DEIRDRE GIRARD (*The Haunting Package*) BSC: *Are You One Of Those Robots?* (10×10 2020). Deirdre Girard received her Playwriting MFA from Boston University. She's had dozens of award-winning short plays produced worldwide, and several full-length productions. Her work has been published by Applause Books, Smith & Kraus, Next Stage Press and Heuer Publishing. Most recently, her collection *Women at the Center* was published, a monologue from *In This House* was selected for The Best Female Monologues of 2022 by Smith & Kraus, she won Best of Show for *Soulmate* and she completed a new collection of short horror plays. Deirdre is a playwriting instructor, a member of the Boston Playwrights' Theatre Advisory Council, an editor for Stage Source's NPA Newsletter and a founding member of the Newburyport Arts Collective.

ARLENE JAFFE (*Anything You Want*) Born in Pittsfield, blossomed in New York, her first written monologue (at age five) was from an indignant monkey in space. She's progressed, with full-length plays and one-acts like: *Anonymous* (Who wrote Frankenstein?), *Search and Rescue* (FEMA dogs at the World Trade Center), *Surrounded* (developed in BMI's Musical Theater Workshop), *The Rock Eater* (Howard Hughes, demystified), *North Bend* (What led to the Newtown tragedy?), *Rita Shalimar* (An actress has big talent, big body issues), *ElliEli* (White hot pain, deep black comedy), *Iriomote* (Plight of an endangered species), *Emigrant* (Building with a soul), *The Keys* (Reverse cyborgs are human?). After *Mr. Mona Lisa* (her published book of historical fiction) is Arlene's just-completed prequel, *Francesco Before*.

STEPHEN KAPLAN (*Right Field of Dreams*) BSC: *For Unto Us* (10×10 2015). Recent productions include a NNPN Rolling World Premiere of *Tracy Jones* (Winner: Chameleon Theatre; Finalist: B Street New Comedies Festival, ScreenCraft Stage Play Contest, Trustus Playwrights Festival). Currently under development: *Un Hombre: A Golem Story* (Finalist: Jewish Plays Project, Wild Imaginings Epiphanies, Gulfshore Playhouse New Works Festival). Other plays have been produced Off Broadway at 59E59 and around the country. He is a 2021 Individual Artist Fellowship winner from the New Jersey State Council on the Arts and his plays have also been finalists for Seven Devils and the Woodward/Newman Award and semi-finalists for PlayPenn and FutureFest. bystephenkaplan.com

DIANA METZGER (*A Date*) is a playwright, screenwriter, essayist, theatre critic and creative writer from Silver Spring, Maryland. Diana has been a teaching artist with Round House Theatre, Everyman Theatre Company, and Art Stream. Round House commissioned and produced Diana's play *Beach Week* with their teen performance company. Diana wrote for the MTV scripted series *Faking It* and worked on the ABC Family show *Greek*. Diana was a finalist for the Humanitas New Voices writing award two years in a row for both comedy and drama writing. Diana received her MFA in Creative Writing at American University and her BS in Communication (Theatre Major with a certificate in Creative Writing for the Media) from Northwestern University.

JIM MOSS (*The Moon Is Full of It*) has authored seven full-length plays and over a hundred one-acts. His work has been produced in theatres in London, Chicago, Miami, Tampa, Orlando, San Diego, Seattle and numerous New York Off Broadway venues, including: La MaMa Galleria, the American Globe and Manhattan Repertory Theatre. In 2018, his play *Tagged* won three contests: First place in Theatre Odyssey's One-Act Play Festival in Sarasota, Best Lab Works Production at the Pittsburgh New Works Festival and the British Theatre Challenge in London. In 2022, his play *Beyond the Summer of Love* was the full-length winner of the Tampa Theatre Festival.

ROBERT WEIBEZAHL (*Gimme Shelter*) BSC: *Gown* (10×10 2022). Robert is delighted to have a play chosen for BSC's 10×10 Festival for the second consecutive year. His plays have been performed live and virtually in New York, California, Massachusetts, Arizona, Ohio, Minnesota, Michigan, Kansas, Indiana and Australia. Playwriting honors include Winner of the Quarantine Playwriting Competition at the Grand Theatre, Cartersville, GA (2020); finalist at Dayton Playhouse's FutureFest (2019); selection for the William Inge Theatre Festival New Play Lab (2022) and the Palisades Playwrights Festival (2018, 2019). He is a member of the Dramatists Guild. robertweibezahl.wordpress.com

CREATIVES

ALAN PAUL (Director) spent 15 seasons at the Tony Award-winning Shakespeare Theatre Company, where he served as Associate Artistic Director. His shows at STC bridged the gap between classical and popular culture. His productions of *Camelot*, *Kiss Me, Kate* and *Man of La Mancha* are the theatre's #2, #3 and #4 highest-selling shows, and *Camelot* won the Helen Hayes Award for Best Musical. Alan has received acclaim for his bold interpretations of Shakespeare, including a modern-dress *Romeo and Juliet* and *The Comedy of Errors* set in 1960s Greece. Alan directed the film of Patrick Page's *All the Devils Are Here*, which was a *New York Times* Critics Pick.

Alan is particularly dedicated to new work and has spent much of his career developing new plays and musicals. At STC, Alan commissioned Lauren Gunderson to write a feminist reimagining of *Peter Pan and Wendy* which premiered in 2019. He recently directed *Our Town* with a new score by Michael John LaChiusa. Other STC productions include *A Funny Thing Happened on the Way to the Forum*, *The Boys From Syracuse*, *The Winter's Tale* and *Twelfth Night*.

Alan has directed productions at theatres across the country including *Kiss Me, Kate* at Seattle's 5th Avenue Theatre and *The King and I* at Chicago's Drury Lane Theatre, for which he was nominated for a Jeff Award for Best Director. In Washington, Alan has directed at the city's top theatres, including *The Pajama Game* at Arena Stage, *Cabaret* at Olney Theatre Center, *Spring Awakening* at Round House Theatre, *The Rocky Horror Show* and *Silence! The Musical* at Studio Theatre, and *I Am My Own Wife* at Signature Theatre.

MATTHEW PENN (Director) BSC: *10×10* 2017–22, *Judgment Day*, *Typhoid Mary*. Penn most recently directed *The Sweet Taste of Freedom*, a film shot entirely in the Berkshires. The film won Best Drama at the New York Shorts International Film Festival. To date the film has played in 14 festivals in 4 different countries. Penn is an Emmy-nominated director and has directed and/or produced over 200 hour-long dramatic television shows. He has worked for every major network as well as Netflix and HBO. He began his television career at *Law & Order* where he earned an Emmy nomination for directing the show's 200th episode and became the show's Executive Producer. Penn's TV credits include iconic series like: *The Sopranos*, *Law & Order* and *NYPD Blue* as well as *Queen of the South* (Co-Executive Producer/Director) *Orange is the New Black*, *Blue Bloods*, *Damages*, *Royal Pains*, *The Mist*, *Secrets and Lies*. On stage Penn directed Jane Anderson's *Mother of the Maid* at New York's Public Theater starring Glenn Close. Berkshire theatre audiences also know Penn from his work at many of the region's most significant theatres: Shakespeare & Co.: *The Beauty Queen of Leenane*, *Vanya and Sonya* and *Masha and Spike*. BTG: *The Actor's Nightmare* and *Sister Mary Ignatius Explains it All for You*. Penn was a Co-Artistic Director of Berkshire Playwrights Lab for 13 seasons.

MARCUS KEARNS (Scenic Designer) is a Johannes Factotum of Theatre. He has spent the 2010s splitting his time between the Berkshires and NYC where he was staying busy as a props carpenter for Broadway, production manager for everything from Redbull to Rihanna, and performing whenever he had the chance. He settled in Brooklyn and was working as the Associate Production Manager of Theater and Media for BRIC Arts Media, where he supported the voices of local artists in Brooklyn. He moved back to the Berkshires in 2021 and made his onstage return debut in *Mr. Fullerton* with The Great Barrington Public Theater before settling in as the Associate Production Manager for Barrington Stage Company.

PEGGY WALSH (Costume Designer) has spent most of her career performing and designing for Musical Theatre. Favorite design projects are *Children of Eden*, *Thoroughly Modern Millie*, *Angels in America* and *The Pirates of Penzance*. For the last 12 years, she has been working with high school students for Shakespeare & Company's Fall Festival. She has costumed in high schools throughout the Berkshires including Taconic, Monument Mountain, Springfield Central, Waldorf, Mount Everett, Chatham and Pittsfield High School. She also designs for Pittsfield's Shakespeare in the Park project. The 10x10 project marks her first time designing for Barrington Stage.

LUCAS PAWELSKI (Lighting Designer) BSC: 10x10 2020–21, *Holiday Getaway*, *Love Letters*. Lucas is a local lighting designer best known for his work at The Colonial Theatre in Pittsfield as the Staff Lighting Designer from 2016 to 2019 and currently for his designs at the Mahaiwe Performing Arts Center in Great Barrington where he serves as the Production Manager and the Resident Lighting Designer. Other design credits include the lighting design of Ghostlit Theatre's Production of *The Tempest* and The Fabulous Invalid's Production of *Call Fosse at the Minskoff*.

ERIC SHIMELONIS (Sound Designer) BSC: *Time Flies and Other Comedies*, *Black Sheep*. Eric has designed and composed for hundreds of plays in NYC and DC, with numerous Drama Desk, Lucille Lortel and Helen Hayes nominations and awards. His compositions have been performed at Carnegie Hall, The Kennedy Center and Tanglewood, and he has received critical acclaim for his score in the film *International Falls*. With his wife, Rebecca Sheir, Eric produces and composes music for the children's storytelling podcast *Circle Round*, which has listeners in more than 160 countries. shimelonis.com

HOPE ROSE KELLY (Production Stage Manager) This is a BSC debut for this Berkshires-based Stage Manager. Theatres worked at include Hartford Stage Company, Shakespeare & Company, WAM Theatre, American Stage Company, Montana Repertory Theatre, Long Wharf Theatre, Public Theatre in Maine, Stonington Opera House, McCarter Theatre, Wilma Theatre, George Street Playhouse, Hangar Theatre, CLOC. Member of Actors' Equity Association and Stage Managers' Association: serving as Editor-in-Chief on the Board, Chair of the International Cohort.

MERIT GLOVER (Assistant Stage Manager) is excited to be working on his first show at Barrington Stage. Recent credits include *Stones in His Pockets*, *It Came From Outer Space*, *Tiger Style!* and *Marie and Rosetta* (Stage Manager, TheatreSquared), *Legally Blonde*, *Little Shop of Horrors* (Assistant Stage Manager, Saugatuck Center for the Arts), *Priming*, *Marie and Rosetta* (Stage Manager, Arkansas Repertory Theatre). Originally from the Berkshires, Merit is a graduate of Berkshire School, and holds a degree in Theatre Arts and Spanish from Case Western Reserve University.

MCCORKLE CASTING: PAT MCCORKLE, CSA; REBECCA WEISS, CSA (Casting) (C.S.A.) Casting actors for Barrington Stage for 21 years. Pat McCorkle is pleased to be an Associate Artist at BSC. Broadway: Over 50 productions including *On the Town*, *Amazing Grace*, *End of the Rainbow*, *The Lieutenant of Inishmore*, *Cat on a Hot Tin Roof*, *One Flew Over the Cuckoo's Nest*, *Amadeus*, *She Loves Me*, *A Few Good Men*. Off Broadway: highlights – *Clever Little Lies*; *Sheer Madness*; *Tribes*; *Our Town* (Barrow Street); *Freud's Last Session*; *Toxic Avenger*; *Almost, Maine*; *Driving Miss Daisy*. Feature film: *Premium Rush*, *Ghost Town*, *The Thomas Crown Affair*, *Die Hard with a Vengeance*, *School Ties*, etc. Television: *Twisted*, *St. George*, *Sesame Street*, *Hack*, *Californication*, *Max Bickford*, *Chappelle's Show*, *Strangers with Candy*, *Barbershop*, etc. mccorklecasting.com

CHARLIE SIEDENBURG (Berkshires Press Representative) (Associate Artist, 19th Season) joined the BSC family in 2005 and has represented over 150 BSC productions. His work has led to features in *The New York Times*, *The Wall Street Journal*, *The Boston Globe*, *Associated Press* and *American Theatre Magazine*. His many PR credits include the Metropolitan Opera (Live in HD), Paper Mill Playhouse, George Street Playhouse, Hartford Stage, Goodspeed Musicals, Long Wharf Theatre, SurfFlight Theatre and Two River Theater Company. He serves as Press Rep for Wagner College Theatre, The Minty Awards, Ghostlight Productions and Forestburgh Playhouse. Charlie is a 1995 Theatre/Arts Administration graduate of Wagner College on Staten Island, where he currently teaches Theatre Appreciation. In 2021, he received a Berkshire Theatre Critics Association Special Award for Exceptional Support of Arts Journalism in the Berkshires.

THE PRESS ROOM (National Press Representatives) Broadway: *Hamilton*, *The Book of Mormon*, *Prima Facie*, *Room*. Off-Broadway: *Blue Man Group*, *Death Drop*, *The Fears*. Upcoming: *Female Troubles*, *Personality: The Lloyd Price Musical*, *A Wonderful World*. Recent credits: *Fiddler on the Roof* in *Yiddish*, *Paradise Square*, *The Waverly Gallery*, *Three Tall Women*, *Farinelli and the King*. Clients include: *The Acting Company*, *Drama Book Shop*, *Hershey Felder*, *Hunter Theater Project*, *National Yiddish Theatre Folksbiene*, *New York Classical Theatre*, *Ogunquit Playhouse*, *Paper Mill Playhouse*, *Rosie's Theater Kids*, *Shakespeare's Globe*, *Theatre Row*, *Vineyard Theatre*, *The Wooster Group*.

ABOUT BARRINGTON STAGE COMPANY

Barrington Stage Company is the fastest-growing arts venue in Berkshire County, attracting more than 60,000 patrons each year. Co-founded by Artistic Director Julianne Boyd in 1995, BSC continues to gain national recognition for its superior-quality productions and comprehensive educational programming. In its first 11 years, BSC operated from rented space at the Consolati Performing Arts Center at Mount Everett High School in Sheffield, MA.

In July 2005, BSC purchased a 1912 vaudeville theatre in downtown Pittsfield, MA and in August 2006, BSC opened its doors to the Boyd-Quinson Stage, a renovated 520-seat, state-of-the-art theatre. In the spring of 2012, BSC purchased the former VFW building in Pittsfield, three blocks from the Boyd-Quinson Stage. The building, now called the Sydelle and Lee Blatt Performing Arts Center, houses the 136-seat St. Germain Stage and Mr. Finn's Cabaret, a 99-seat cabaret space in the lower level of the building. In 2016, BSC purchased a three-story administrative building on North Street, known as the Wolfson Center, in the heart of downtown Pittsfield. For the first time in the company's history, all BSC offices, rehearsal spaces and classrooms are under one roof, including the costume shop and collection. In 2019, BSC purchased a 22,000 sq. foot building at 34 Laurel Street that has become its Production Center, housing the set, prop and paint shops. The Production Center is also the site of BSC's outdoor tent productions in 2021.

Together with other cultural institutions, BSC has become an integral part of downtown Pittsfield's economic revitalization. In 2009, the Massachusetts Cultural Council presented a "Creative Community" Commonwealth Award to the City of Pittsfield in recognition of its efforts to boost the creative economy in Massachusetts.

PRODUCTION HISTORY

BSC's reputation for excellence began with a smash revival of *Cabaret* that moved to Boston in 1997 for an extended run. The theatre's prominence grew with the world premiere of *The 25th Annual Putnam County Spelling Bee* by William Finn and Rachel Sheinkin (BSC 2004; Broadway 2005-2008, winner of two Tony Awards). Other notable productions include Mark St. Germain's *Freud's Last Session* (BSC 2009; Off Broadway 2010-2012); Leonard Bernstein, Comden & Green's *On the Town* (BSC 2013; Broadway 2014, four Tony Award nominations); the world premiere of Christopher Demos-Brown's *American Son* (BSC 2016; Broadway 2018); Stephen Sondheim and George Furth's *Company*, starring Aaron Tveit (BSC 2017); and *West Side Story* in honor of Leonard Bernstein and Jerome Robbins' centenaries (BSC 2018).

BSC develops and commissions new work with two programs: PlayWorks, which supports the creation of new plays, and the Musical Theatre Lab, which develops new musicals. Since 1995, BSC has produced 38 new works, 19 of which have moved to New York and major US regional theatres. Following the industry-wide shut down due to the coronavirus pandemic, BSC was the first Equity theatre in the US to return to live performance with its critically acclaimed production of *Harry Clarke*, starring BSC Associate Artist Mark H. Dold and directed by Ms. Boyd.

The 2022 season featured a critically acclaimed revival of *Ain't Misbehavin'*, which won two Berkshire Theatre Awards, including Outstanding Ensemble; Nilo Cruz's Pulitzer Prize-winning *Anna in the Tropics*; Stephen Sondheim and Hugh Wheeler's *A Little Night Music*, winner of eight Berkshire Theatre Awards including Outstanding Production of a Musical; the world premiere play *All of Me* by Laura Winters, winner of two Berkshire Theatre Awards; the world premiere play *Andy Warhol in Iran* by Brent Askari, winner of a Berkshire Theatre Award for world premiere of a new play; May Treuhaft-Ali's world premiere play *ABCD*; the Youth Theatre's world premiere production of *The Supadupa Kid*; and Samuel Beckett's *Waiting for Godot*, winner of three Berkshire Theatre Awards including Outstanding Production of a Play. See your program insert or our website for the full 2023 season.

COMMITMENT TO NEW WORK

At Barrington Stage Company, we believe that new work is the heart and soul of theatre. If theatre is to thrive and create meaningful and new experiences for audiences, then it is vital to support working playwrights and their visions of the world we live in. Since its inception in 1995, BSC has produced 41 new works, 21 of which have moved on to New York and major regional theatres around the country.

In 2019, the Board of Directors created the Julianne Boyd New Works Fund to support artistic innovation and sustainability. Named for BSC's Founding Artistic Director, who has a long-held commitment of bringing fresh and dynamic voices to the stage, the Fund supports the ongoing development and production of original plays and musicals. This Fund is made possible in part by the generous support of the Sydelle Blatt New Works Commission Program and the Bonnie and Terry Burman New Play Award. Their vision and philanthropy allow BSC to develop and produce work that challenges us, that asks questions and that can spark joy and passion in our hearts.

COMMITMENT TO EDUCATION

The BSC Education mission is to awaken the minds, imaginations and creative power of children, teenagers and young adults by providing opportunities for them to experience the joy of live theatre as performers, writers, technicians and audience members.

GET TO KNOW **BARRINGTON STAGE COMPANY**

ARTISTIC

Artistic Director **Alan Paul**

Artistic Producer/Director of New Works **Branden Huldeen**

Casting **McCorkle Casting: Pat McCorkle, CSA; Rebecca Weiss, CSA**

Founding Artistic Director **Julianne Boyd**

ADMINISTRATION

General Manager **Maggie LaMee**

Director of Accounting **Martha Read**

Office Manager/IT Administrator **Seth Peto**

Associate Company Manager **William Schuyler**

DEVELOPMENT

Director of Development **Jessica Provenz**

Business Partnerships Manager **Liam Castellan**

Development Associate & Donor Relations Concierge **Haven Sandoval**

Director of Institutional Giving **Martin Mansfield**

Development Assistant **Elise Pakiela**

Special Events & Donor Relations Intern **Helen Hogge**

EDUCATION

Director of Education/Director of Playwright Mentoring Project **Jane O'Leary**

Associate Director of Community Engagement and DEIA **Sharron Frazier-McClain**

Associate Director of Education **Jessica Griffin**

Education and Community Engagement Coordinator **Xinef Afriam**

MARKETING & AUDIENCE SERVICES

Associate Director of Marketing **Paige Stefanski**

Creative Content Manager **Andrew Cromartie**

Associate Director of Audience Services **Jessica Bush**

Associate Box Office Manager **Troy Gähns**

Volunteer Relations Manager **C. Jade Nicholas**

Berkshires Press Representative **Charlie Siedenbug**

National Press Representatives **The Press Room: Jim Byk, Kelly Guidon**

PRODUCTION

Director of Production and Operations **Joseph Martin**

Associate Production Manager **Marcus Kearns**

Assistant Production Manager **Sarah Keyes**

Head of Maintenance **Joe Gunn**

BOARD OF DIRECTORS

Mary Ann Quinson, *Board Chair*

Chris Dodig, *Vice President*

Marita O'Dea Glodt, *President*

Bonnie Burman, *Secretary*

Alan Paul, *Artistic Director*

Robert Youdelman, *Treasurer*

Mary Chris Bassman

Caroline Holland

David B. Schulman

Roz Stuzin

Carole Burack

Arnold Kotlen

Laurie Schwartz

Jodi Tartell

Warren Dews, Jr.

Rhoda Levitt

Richard Seltzer

David Tierney

Ralph Friedner

Sheila Richman

Richard Slutzky

Eleanore Velez

Alan H. Green

Debra Jo Rupp

Mark St. Germain

BOARD EMERITI

Sydelle Blatt

Jeananne

Roberta Olsen

Eda Sorokoff

Kathleen Chrisman

Hauswald Harris

Robert Petricca

Reid White

Reba Evenchik

Marcie Imberman

Jude Sabot

Eileen Young

Marilyn "Mike" S. Faust

James A. Lapenn

Rosita Sarnoff

Sherwood Guernsey

Heather Nolin

Richard Solar

MISSION

Barrington Stage Company (BSC) is a not-for-profit professional theatre company in the Berkshires (MA) with a three-fold mission: to produce top-notch, compelling work; to develop new plays and musicals; and to engage our community with vibrant, inclusive educational outreach programs.

VISION

Barrington Stage creates theatre experiences that engage and excite our audiences by entertaining as well as challenging them with the most dynamic and provocative productions possible. BSC creates a platform for new voices and diverse perspectives that drives all of our work: our productions, our educational programming and our community engagement.

VALUES

- Artistic Excellence – we create an environment that empowers and supports artists to do their best work.
- Community – we create relevant work that deeply resonates with the diverse communities we serve.
- Equity, Diversity and Inclusion – we welcome artists, staff and patrons of all ethnic and cultural backgrounds, economic groups, religions, age, gender and physical ability.
- Respect and Openness – we strive to create a positive environment where ideas from many different perspectives are valued and openly discussed.
- Stewardship – we believe that financial health and stability are integral to our success and embrace our responsibility to be good stewards of the resources entrusted to us.

GUIDING PRINCIPLES

We acknowledge that we are gathering on the ancestral homelands of the Mohican people. Despite tremendous hardship in being forced from here, today their community resides in Wisconsin and is known as the Stockbridge-Munsee Community. We pay honor and respect to them and their ancestors as we commit to building a more inclusive and equitable space for all. Barrington Stage Company recognizes that we are a predominantly white institution that has historically benefited from systemic racism. We commit to anti-racism and anti-oppression throughout our organization. Black lives matter. We accept the responsibility to fight to end racial inequities in our theatre and our industry.

Barrington Stage Company is committed to a workplace free of discrimination on the basis of race, color, ethnicity, gender, sexual orientation, national origin, religion, age, or disability. Our work seeks to celebrate all members of our community and amplify the marginalized voices who are often silenced. It is our responsibility to prioritize and protect from discrimination and oppression those who make our work possible. We stand in solidarity against bigotry and racism. We will hold our artists, staff, board, audience members, volunteers and donors accountable to these principles.



BARRINGTON STAGE COMPANY
THEATRE CAMPS

Kidsact!
with BSC

TEENSACT!
with BSC

QR Code

For more information, please contact Education@BarringtonStageCo.org or 413.997.6117 • BarringtonStageCo.org/KATA