

PRESENTS

**BILLY CRYSTAL**  
*in*  
**MR. SATURDAY NIGHT**

A new musical in development

BOOK BY

**Billy Crystal,  
Lowell Ganz & Babaloo Mandel**

MUSIC BY

**Jason Robert Brown**

LYRICS BY

**Amanda Green**

Based on the Castle Rock Entertainment motion picture "Mr. Saturday Night",  
written by Lowell Ganz and Babaloo Mandel and based on a concept by Billy Crystal.  
By special arrangement with Warner Bros. Theatre Ventures

FEATURING

**Jordan Gelber  
Brian Gonzales  
Randy Graff  
Chasten Harmon  
Myllinda Hull  
David Paymer  
Alysha Umphress**

MUSIC DIRECTOR

**David O**

ORCHESTRATIONS & ARRANGEMENTS BY

**Jason Robert Brown**

CHOREOGRAPHED BY

**Ellenore Scott**

DIRECTED BY

**John Rando**

SPONSORED IN PART BY

**Leslie and Stephen Jerome & Abby Schroeder**

By special arrangement with Nederlander Presentations, Inc., James L. Nederlander, President

## CAST

IN ALPHABETICAL ORDER

Buddy Young, Jr .....	Billy Crystal*
Farber, Howie & Others .....	Jordan Gelber*
Larry Myerson, Will & Others .....	Brian Gonzales*
Elaine Young .....	Randy Graff*
Annie Wells .....	Chasten Harmon*
Ronnie, Karen & Others .....	Mylinda Hull*
Stan Yankelman .....	David Paymer*
Susan Young .....	Alysha Umphress*

## BAND

Conductor/Piano .....	David O
Trombone/Tuba .....	Nick Grinder
Drums .....	Jesse-Ray Leich
Guitar .....	Gary Sieger
Trumpet .....	Liesl Whitaker
Bass .....	Sue Williams
Rehearsal Pianist/Music Assistant .....	Jason Loffredo

## STAFF

Production Stage Manager .....	Tripp Phillips*
Assistant Stage Manager .....	Jason Hindelang*
Company Managers .....	Michael Altbaum, Charlotte Cugnini
Associate Director .....	Josiah Davis
Associate Choreographer .....	Jeffrey Gugliotti
Associate Sound Designer .....	Josh Samuels
Audio Supervisor/Audio Engineer (A1) .....	Alex Berg
Audio Engineer (A2) .....	Parker Strong, Jr.
Electrician/Board Operator .....	Connor Beattie
Wardrobe Supervisor .....	Caitie Martin
Hair & Wig Associate .....	Fred Waggoner
Production Assistants .....	Amanda Blanco, Maria DiVittorio
Stage Crew .....	Joe Gunn, Caitie Martin, Ben Reading, Katelyn Seymour
Music Copyist .....	Blane Music, Inc. / John Blane
NY COVID Safety Manager .....	Sergio Manriquez
BSC Berkshire Press Representative .....	Charlie Siedenburg
BSC National Press Representative .....	The Press Room
BSC Digital Advertising .....	Capacity Interactive

## SPECIAL THANKS

Steven Valenti Clothing for Men



\*Actors and Stage Managers are members of Actors' Equity Association.



The Director and Choreographer are members of the STAGE DIRECTORS AND CHOREOGRAPHERS SOCIETY, a national theatrical labor union.

**American Express®** is the Official Partner of **Mr. Saturday Night**

*Mr. Saturday Night* takes place in New York City in 1994 and, in flashbacks, in the late 1940s and early 1950s.

The show is played in two acts.

There will be a 15-minute intermission between acts.

### MUSICAL NUMBERS

"Mr. Saturday Night" .....	Buddy's Singers
"A Little Joy" .....	Buddy
"The Living Room" .....	Abie & Stan
"There's a Chance" .....	Susan
"That Guy" .....	Buddy
"At Farber's" .....	Farber & Ensemble
"Until Now" .....	Buddy, Elaine & Stan
"Timing" .....	Buddy, Howie, Will & Ronnie
"What If I Said?" .....	Annie
"Unbelievable" .....	Full Company
"Maybe It Starts With Me" .....	Susan
"Tahiti" .....	Elaine
"My Wonderful Pain" .....	Elaine & Buddy
"Broken" .....	Stan
"Any Man But Me" .....	Buddy
"Stick Around" .....	Susan, Elaine, Buddy, Annie & Company

### CAST



**BILLY CRYSTAL (Buddy Young Jr./Book)** is a Tony and Emmy Award-winning comedian, actor, producer, writer and director. He is known around the world as the star of such feature films as *When Harry Met Sally...*, *City Slickers* and *Analyze This*; as a cast member of NBC's *Saturday Night Live*; and the acclaimed nine-time host of the Academy Awards®. Crystal has hosted the GRAMMY® Awards three times and earned five Emmys for his work as host, writer and producer on both shows. Billy won his sixth Emmy for the HBO Comedy Special *Midnight Train to Moscow*. Crystal was the 2007 recipient of the Mark Twain Prize for American Humor and is a *NY Times* best-selling author of five books. In 2004, Crystal made his Broadway debut with the original production of his one-man show *700 Sundays*, for which he won a Tony Award. The Broadway production was released as an HBO special, garnering four Emmy nominations. Crystal's latest work includes the friendship comedy *Standing Up*, *Falling Down* opposite Ben Schwartz, as well as *Here Today* which Crystal directed, produced and stars in opposite Tiffany Haddish.



**JORDAN GELBER (Farber, Howie & Others)** Broadway: *Sunday in the Park with George*, Buddy in *Elf*, *All My Sons*, *Avenue Q* (original cast, Outer Critics Circle Award). Off Broadway: *Nantucket Sleigh Ride*, *2000 Years*, *The Joke*, *Birth and After Birth*, *Avenue Q*. Film: star of *Dark Horse*, *The Kitchen*, *Bleed for This*, *Pelham*, *Before the Devil Knows You're Dead*, *Everyday People* (IFP/Gotham Award nominee), *Riding in Cars With Boys*, *Changing Lanes*. TV: *Elementary*, *Mr. Robot*, *Mindhunter*, *Insatiable*, *Boardwalk Empire*.

*Nurse Jackie, Rescue Me, Ugly Betty*, every *Law & Order* series, *The Sopranos*, 100 Centre Street. BA, Stanford University; MFA, NYU Tisch Graduate Acting (Laura Pels Award). JordanGelber.com



**BRIAN GONZALES (Larry Myerson, Will & Others)** Broadway: *Aladdin*, *One Man Two Guv'nors*, *Shrek*, *The 25<sup>th</sup> Annual Putnam County Spelling Bee*. National Tour: *Shrek*, *The 25<sup>th</sup> Annual Putnam County Spelling Bee*. Regional: Various across the country. TV/Film: *Aladdin: Live from the West End*, *Elementary*, *Law & Order*.



**RANDY GRAFF (Elaine Young)** Broadway: *City of Angels* (Tony/Drama Desk Award), *A Class Act* (Tony/Drama Desk nominations), *Fiddler on the Roof* (2004), *Laughter on the 23rd Floor*, *Moon Over Buffalo*, *Falsettos*, *High Society*, *Les Misérables* (original Fantine). Off Broadway/Regional: *The Babylon Line* (Lortel Award), *Motherhood Out Loud* (Primary Stages), *The Long Christmas Ride Home* (Vineyard Theatre) and productions at Playwrights Horizons, La Jolla Playhouse, Old Globe, McCarter Theater and The Kennedy Center's Sondheim Festival as the Countess in *A Little Night Music*. Ms. Graff has sung on several original Broadway cast recordings and her own solo CD *Randy Graff Sings Cy Coleman*.



**CHASTEN HARMON (Annie Wells)** recurs on the CBS All Access series *The Good Fight*. She previously starred in the USA series *Damnation* and had recurring roles on ABC's *The Fix*, NBC's *The Inbetween* and CBS's *Elementary*. In film, Chasten can be seen opposite Adam Driver in Jim Jarmusch's *Paterson*. She will next be seen starring in the independent film *The Mistress*. Notable theatre credits include *Hair* on Broadway and the 25th Anniversary National Tour of *Les Misérables*. Chasten received her BFA from NYU, MFA from the Yale School of Drama.



**MYLINDA HULL (Ronnie, Karen & Others)** Broadway: *The Nance*, *Dirty Rotten Scoundrels*, *Sweet Charity*, *Little Shop of Horrors*, *42nd Street*. *Skittles Commercial: The Broadway Musical* (Town Hall). Off Broadway: *Road Show* (Public Theater), *I Love You, You're Perfect...* (Westside Theatre). Encores!: *High Button Shoes*, *The New Yorkers*, *Merrily We Roll Along*, *Girl Crazy*, *Face the Music*. Regional: *The Connector* (NYSAF), *Dancing at Lughnasa* (Two River), *Guys and Dolls* (North Shore, IRNE Award). Nat'l Tour: Lola opposite Jerry Lewis in *Damn Yankees*. Television: *Fosse/Verdon*, *Younger*, *Rise*, *The Big C*, *The Blacklist*. Upcoming solo show: *Queen Guinevere and Her Legal Fees*. Best of all: Brooklyn housewife, mother of two.



**DAVID PAYMER (Stan Yankelman)** After performing with him in *City Slickers*, Billy Crystal wrote him into *Mr. Saturday Night*, earning him an Oscar nomination. He has worked with prolific directors such as Spielberg (*Amistad*), Redford (*Quiz Show*), Oliver Stone (*Nixon*), David Mamet (*State & Main*), Steven Soderbergh (*Ocean's Franchise*) and Sam Raimi (*Drag Me To Hell*). Paymer has since notably starred in *The American President*, *Get Shorty*, *Payback*, *The Hurricane*, *In Good Company*, Francis Ford Coppola's *Twixt* and Amazon's *The Marvelous Mrs. Maisel*. Paymer can currently be seen recurring on FX on Hulu's *Dave* as Dave Burd's father.



**ALYSHA UMPHRESS (Susan Young)** BSC Associate Artist. BSC: *Who Could Ask for Anything More?* *The Songs of George Gershwin*, *The Hills Are Alive with Rodgers & Hammerstein*, BSC's *Holiday Getaway*, *On the Town*, *Funked Up Fairytales* and countless concerts. Broadway: *On the Town*; *American Idiot* (OBC); *On a Clear Day You Can See Forever*; *Priscilla, Queen of the Desert*; *Bring it On*. Off Broadway: *Scotland, PA*; *Smokey Joe's Cafe* (Lortel Nominee and Chita Rivera Award winner); *Make Me a Song* (The Music of William Finn). TV: *Girls5eva*, *Bonding*, *The Climb*, *Law & Order: SVU*, *Royal Pains*, *Nurse Jackie*. Recordings: *On the Town*, *Wonderful Town* (with the London Symphony Orchestra), *American Idiot*, *Bring it On!*, *Fugitive Songs* and *I've Been Played: Alysha Umphress Swings Jeff Blumenkrantz*. Huge Thanks to Erica, Tim and Prizey.

## CREATIVES

**LOWELL GANZ (Book)** grew up in Queens and moved to Los Angeles to begin a career writing for television shows, including *The Odd Couple*, *Happy Days* and *Laverne and Shirley* (which he co-created). After teaming up with Babaloo Mandel, he began a screenwriting career. Their credits include *Night Shift*, *Splash*, *Gung Ho*, *Spies Like Us*, *Parenthood*, *City Slickers*, *A League of Their Own*, *Mr. Saturday Night*, *Forget Paris*, *Multiplicity*, *Ed TV* and *Fever Pitch*. In 2019, they received the Writers Guild Laurel Award for Lifetime Achievement in Screenwriting. Lowell also, along with Garry Marshall, wrote a play, *Wrong Turn at Lungfish*, which was produced at Steppenwolf in Chicago, in Los Angeles and Off Broadway. He considers the opportunity to be part of the creative team that is bringing a new musical to Broadway a highlight of his career. Lowell lives in Los Angeles with his wife Jeanne. They have three children and five grandchildren, and he still roots for the Mets.

**BABALOO MANDEL (Book)** was born and raised in The Bronx, where his school grades disproved that all Jews were smart. At age 10, he was figuratively struck by lightning upon seeing the classic film *Some Like It Hot*. In 1972, he left New York for Hollywood to pursue his *Some Like It Hot* screenwriting dream. He soon landed his first writing job on the TV series *M\*A\*S\*H*. He was immediately fired and his office thoroughly fumigated. Several years later, after writing jokes for comics,

great pity befell him by Lowell Ganz. He worked on several TV shows co-run by Mr. Ganz, until an opportunity came along to fulfill Babaloo's screenwriting dream. Together they have written 20 films, among them *Splash*, *Parenthood*, *A League of Their Own* and four films for the luminescent Billy Crystal (in case he reads this) – *City Slickers 1* and *2*, *Mr. Saturday Night* and *Forget Paris*. In 2019 they were recipients of the Writers Guild Lifetime Achievement Award. In his personal life, Babaloo has been married for 46 years, because who else would marry him? Together he and his wife Denise, who he has known since she was 14, have six children and two grandchildren. As for *Mr. Saturday Night*, the Broadway-bound musical, this goes beyond a 10-year-old boy's dream.

**JASON ROBERT BROWN (Composer/Orchestrator & Arranger)** Jason's musicals include *Songs for a New World*, *Parade* (Best Score Tony Award), *The Last Five Years* (also a feature film), *13* (being released on Netflix summer 2022), *The Bridges of Madison County* (Best Score and Best Orchestrations Tony Awards), *Honeymoon In Vegas*. Jason's albums as a singer-songwriter include *Wearing Someone Else's Clothes*, *How We React and How We Recover*, *Live in Concert with Anika Noni Rose* and this year's *Coming From Inside the House* with Ariana Grande and Shoshana Bean. Upcoming: *The Connector*; *Farewell My Concubine*; concerts and Hadassah meetings. *Mr. Saturday Night* marks Jason's first collaboration with any of these people and they all seem nice.

**AMANDA GREEN (Lyrics)** is a Tony Award-nominated lyricist/composer, writer and performer. She wrote the lyrics and co-composed *Hands on a Hardbody* (Tony, Outer Critics Circle and two Drama Desk Award nominations for Music & Lyrics, first woman composer to receive the Frederick Loewe Award for Outstanding Composition). In the same season she co-wrote lyrics for *Bring It On* (Tony-nominated for Best Musical, Drama Desk nomination for Lyrics); also Broadway: *High Fidelity* (Lyrics); Additional book and lyrics for Tony-nominated revival of *Kiss Me, Kate*; Additional lyrics for Tony-nominated revival of *On the Twentieth Century*. TV: *Peter Pan Live*, *The Kennedy Center Honors*. She is currently writing the lyrics for *Female Troubles*, an original musical comedy which she describes as "Jane Austen meets *Bridesmaids* but about Women's Reproductive Freedoms." Amanda is the first woman President of The Dramatists Guild of America.

**JOHN RANDO (Director)** BSC Associate Artist. BSC: *The Royal Family of Broadway*, *The Pirates of Penzance*, *On the Town*, *Guys and Dolls*. He won the 2002 Best Director Tony Award and Outer Critics Circle Award for *Urinetown the Musical*. Other Broadway credits include: *On the Town* (Tony nom for Direction), *A Christmas Story*, *The Wedding Singer*, *Penn & Teller*, *A Thousand Clowns*, among others. City Center Encores productions include: *The New Yorkers*, *High Button Shoes*, *It's a Bird... It's a Plane... It's Superman!*, *Annie Get Your Gun*, *Gentlemen Prefer Blondes*, *Damn Yankees*, *Face the Music*, *Of Thee I Sing*, *The Pajama Game*, *Do Re Mi* and *Strike Up the Band* (all for City Center Encores!). Off Broadway credits include *Jerry Springer: The Opera* (The New Group), David Ives's *The Heir Apparent* (2014 SDCF Callaway Award for Direction—Classic Stage Company) and *All in the Timing*

(2013 Obie Award for Direction). Internationally, John's work can be seen in China with two original musicals: Jay Chou's *The Secret* and Jonathan Lee's *Spirit of Life*. Currently John's hit production of the new musical *Back to the Future* can be seen on London's West End.

**ELLENORE SCOTT (Choreographer)** is a choreographer, performer and creative director. In 2021, Ellenore will choreograph the Broadway revival of *Funny Girl*. She has also served as the associate choreographer for *Head Over Heels* and *King Kong* on Broadway and was the assistant choreographer for the Broadway revivals of *Cats* and *Falsettos*. She choreographed Kate Hamill's Off Broadway's production of *Pride and Prejudice* and Jeremy O. Harris' *Black Exhibition*. She is the Artistic Director of ELSCO Dance, a New York contemporary dance company. As a performer she was a finalist and an All-Star on the hit television show *So You Think You Can Dance*. Ellenore has performed on numerous television shows (*Glee*, *Smash*, *The Ellen Show*, *The Blacklist*, *The Marvelous Mrs. Maisel*, among others) and danced with Janet Jackson. @ellenorescott

**DAVID O (Music Director)** has musically directed the world premieres of *Soft Power* (Jeanine Tesori & David Henry Hwang), *13* (Jason Robert Brown), *Breaking Through*, *Sleepless in Seattle the Musical*, *Songs & Dances of Imaginary Lands* and *Toy Story: The Musical*, as well as the West Coast premieres of Michael John LaChiusa's *The Wild Party*, *Little Fish* and *See What I Wanna See*. He co-conceived and co-directed the viral video *You Can't Stop the Beat – A Celebration for the Actors Fund*.

**TRIPP PHILLIPS (Production Stage Manager)** has 20 Broadway credits including *Plaza Suite*, *All My Sons*, *Carousel*, *War Paint*, *The Front Page*, *Finding Neverland*, *A Gentleman's Guide...*, *Macbeth*, *Born Yesterday*, *Lombardi*, *Finian's Rainbow*, *Pal Joey*, *Passing Strange*, *The Ritz*, *42nd Street*, *Swing!*, *Ring Round the Moon*, *Dream*, *The King and I* and *How to Succeed...* National tours he has managed or supervised include *42nd Street*, *Memphis*, *A Christmas Story*, *Jersey Boys*, *White Christmas* and *A Gentleman's Guide...*, serving as associate director of the latter. He has a number of Off Broadway and regional theatre credits as well as 12 productions for New York City Center's Encores! series of Great American Musicals. He has lectured or taught as guest instructor at the Yale School of Drama, Columbia University, NYU and Penn State University.

**JASON HINDELANG (Assistant Stage Manager)** Broadway: *Plaza Suite* (upcoming), *All My Sons*, *Carousel*, *War Paint*, *The Front Page*, *Macbeth*, *A Gentleman's Guide to Love and Murder*, *Born Yesterday*, *Finian's Rainbow*, *Pal Joey*, *Passing Strange*, *The Ritz*, *The Coast of Utopia* and *Awake and Sing!*. Off Broadway: *Broadbend*, *Arkansas* (Transport Group), 10 NY City Center Encores! productions. Regional: 10 seasons at Berkshire Theatre Group.

## MISSION

**Barrington Stage Company (BSC) is a not-for-profit professional theatre company in the Berkshires (MA) with a three-fold mission: to produce top-notch, compelling work; to develop new plays and musicals; and to engage our community with vibrant, inclusive educational outreach programs.**

## ABOUT

Barrington Stage Company is the fastest-growing arts venue in Berkshire County, attracting more than 60,000 patrons each year. Co-founded by Artistic Director Julianne Boyd in 1995, BSC continues to gain national recognition for its superior-quality productions and comprehensive educational programming. In its first 11 years, BSC operated from rented space at the Consolati Performing Arts Center at Mount Everett High School in Sheffield, MA.

In July 2005, BSC purchased a 1912 vaudeville theatre in downtown Pittsfield, MA and in August 2006, BSC opened its doors to the Boyd-Quinson Stage, a renovated 520-seat, state-of-the-art theatre. In the spring of 2012, BSC purchased the former VFW building in Pittsfield, three blocks from the Boyd-Quinson Stage. The building, now called the Sydelle and Lee Blatt Performing Arts Center, houses the 136-seat St. Germain Stage and Mr. Finn's Cabaret, a 99-seat cabaret space in the lower level of the building. In 2016, BSC purchased a three-story administrative building on North Street, known as the Wolfson Center, in the heart of downtown Pittsfield. For the first time in the company's history, all BSC offices, rehearsal spaces and classrooms are under one roof, including the costume shop and storage. In 2019, BSC purchased a 22,000 sq. foot building at 34 Laurel Street that has become its Production Center, housing the set, prop and paint shops. The Production Center is also the site of BSC's outdoor tent productions in 2021.

Together with other cultural institutions, BSC has become an integral part of downtown Pittsfield's economic revitalization. In 2009, the Massachusetts Cultural Council presented a "Creative Community" Commonwealth Award to the City of Pittsfield in recognition of its efforts to boost the creative economy in Massachusetts.

## PRODUCTION HISTORY

BSC's reputation for excellence began with a smash revival of *Cabaret* that moved to Boston in 1997 for an extended run. The theatre's prominence grew with the world premiere of *The 25th Annual Putnam County Spelling Bee* by William Finn and Rachel



Pictured: Dan Fogler, Deborah S. Craig, Celia Keenan-Bolger, Jesse Tyler Ferguson and Sarah Saltzberg in *The 25th Annual Putnam County Spelling Bee*, BSC World Premiere 2004. Photo: Joe Schuyler.





Pictured: Martin Rayner and Mark H. Dold in *Freud's Last Session*, BSC World Premiere 2009. Photo: Kevin Sprague.

Broadway 2018); Stephen Sondheim and George Furth's *Company*, starring Aaron Tveit (BSC 2017); and *West Side Story* in honor of Leonard Bernstein and Jerome Robbins' centenaries (BSC 2018).

Following the industry-wide shutdown due to the coronavirus pandemic, BSC was the first Equity theatre in the US to return to live performance with its critically acclaimed production of *Harry Clarke*, starring BSC Associate Artist Mark H. Dold and directed by Ms. Boyd.

The 2021 season, featuring a series of critically acclaimed indoor and outdoor productions, has included *Chester Bailey* by Joseph Dougherty starring father and son Reed and Ephraim Birney, *Eleanor* by Mark St. Germain and starring Tony Award winner Harriet Harris, the world premiere of *Sister Sorry* by Alec Wilkinson, the revue *Who Could Ask for Anything More? The Songs of George Gershwin* and the world premiere of *Boca*, a collection of short comedies by Jessica Provenz. The season concludes with the world premiere of *A Crossing: A Dance Musical*, created in association with the Calpulli Mexican Dance Company, choreographed by Joshua Bergasse and Alberto Lopez and directed by Bergasse.



Pictured: Debra Jo Rupp in *Dr. Ruth, All the Way*, BSC World Premiere 2012. Photo: Kevin Sprague.

### COMMITMENT TO NEW WORK

BSC develops and commissions new work with two programs: PlayWorks, which supports the creation of new plays, and the Musical Theatre Lab, which develops new musicals.

At Barrington Stage Company, we believe that new work is the heart and soul of theatre. If theatre is to thrive and create meaningful and new experiences for audiences, then it is vital to support working playwrights and their visions of the world we live in. Since its inception in 1995, BSC has produced 36 new works, 19 of which have moved on to New York and major regional theatres around the country.



Pictured: Tamara Tunie and Michael Hayden in *American Son*, BSC World Premiere 2016. Photo: Scott Barrow.



Pictured: Elizabeth Stanley, Clyde Alves, Deanna Doyle, Tony Yazbeck, Alysha Umphress and Jay Armstrong Johnson in *On the Town*, BSC 2013, Broadway 2014. Photo: Kevin Sprague.

In 2019, the Board of Directors created the Julianne Boyd New Works Fund to support artistic innovation and sustainability. Named for BSC's Co-founder and Artistic Director, who has a long-held commitment of bringing fresh and dynamic voices to the stage, the Fund supports the ongoing development and production of original plays and musicals. This Fund is made possible in part by the generous support of the Sydelle Blatt New Works Commission Program and the Bonnie and Terry Burman New Play Award. Their vision and philanthropy allow BSC to develop and produce work that challenges us, that asks questions and that can spark joy and passion in our hearts. BSC seeks artists whose unique voices speak to our audiences with relevant and dynamic new work that questions the world we live in – questions that may not have answers, but will begin a dialogue between the artists and our audiences.

### **COMMITMENT TO EDUCATION**

The BSC Education mission is to awaken the minds, imaginations and creative power of children, teenagers and young adults by providing opportunities for them to experience the joy of live theatre as performers, writers, technicians and audience members.

### **BSC EDUCATION PROGRAMS**



Playwright Mentoring Project, 2019

**PLAYWRIGHT MENTORING PROJECT** is an intensive, six-month, out-of-school activity that uses theatre as a catalyst to help youth ages 13–19 learn valuable life skills that can aid them in developing a positive self-image. Over the course of the program, teens are enabled to create an original performance piece based on their own stories in a safe and confidential environment where they can express themselves, develop conflict/

resolution skills and create a supportive community. Winner of the *Coming Up Taller Award* from the President's Committee on the Arts and Humanities.

**MUSICAL THEATRE CONSERVATORY** is an intensive pre-professional training program in Acting, Directing and Choreography where students work and train with top-level New York directors, choreographers and musical theatre writers during BSC's summer season.

**PROFESSIONAL INTERNSHIP PROGRAM** is a professional training program where paid internships are offered to college students and recent graduates interested in pursuing careers in theatre. Interns work with award-winning theatre professionals while spending a summer in the thriving theatre culture of the Berkshires.

**YOUTH THEATRE** extends the professionalism of our stages to local youth, whereby students mount a full-scale musical theatre production. The 2022 production will be the world premiere of *The Supadupa Kid* – Book by Melvin Tunstall III, Music by Joel Waggoner, Lyrics by Sukari Jones, Based on the novel by Ty Allan Jackson.

**STUDENT MATINEE/SCHOOL RESIDENCY PROGRAM** During Fall productions, students are brought to special all-student matinees and invited to stay for a talkback with members of the creative team. The school administration and faculty are provided with a study guide that prepares students for the production which provides a springboard for teachers to build lesson plans tying their curriculum to the show.

**KIDSACT!, TEENSACT! & KIDSACT! JR.** are spring and summer day camps where students learn all aspects of theatre and what it takes to create quality productions. Winner of the 2019 Macaroni Kid Berkshire Family Favorite Theater Class.

### **GUIDING PRINCIPLES**

We acknowledge that we are gathering on the ancestral homelands of the Mohican people. Despite tremendous hardship in being forced from here, today their community resides in Wisconsin and is known as the Stockbridge-Munsee Community. We pay honor and respect to them and their ancestors as we commit to building a more inclusive and equitable space for all.

Barrington Stage Company recognizes that we are a predominantly white institution that has historically benefited from systemic racism. We commit to anti-racism and anti-oppression throughout our organization. Black lives matter. We accept the responsibility to fight to end racial inequities in our theatre and our industry.

Barrington Stage Company is committed to a workplace free of discrimination on the basis of race, color, ethnicity, gender, sexual orientation, national origin, religion, age or disability. Our work seeks to celebrate all members of our community and amplify the marginalized voices who are often silenced. It is our responsibility to prioritize and protect from discrimination and oppression those who make our work possible. We stand in solidarity against bigotry and racism. We will hold our artists, staff, board, audience members, volunteers and donors accountable to these principles.

## **GET TO KNOW BARRINGTON STAGE COMPANY**

### **ARTISTIC**

*Artistic Director* **Julianne Boyd**

*Artistic Producer/Director of New Works* **Branden Huldeen**

*Executive Assistant to the Artistic Director/Artistic Fellow* **Hannah Katz**

*Archivist* **Autumn Cuddy**

*BSC Casting Director* **Pat McCorkle, CSA, McCorkle Casting Ltd. | Rebecca Weiss**

### **ADMINISTRATION**

*General Manager* **Maggie LaMee**

*Director of Accounting* **Martha Read**

*Office Manager/IT Administrator* **Seth Peto**

*Company Manager* **Charlotte Cugini**

*Volunteer Relations Manager* **C. Jade Nicholas**

*House Managers* **Miquela Cruz | Travis Kendrick**

### **DEVELOPMENT**

*Director of Development* **Jessica Provenz**

*Development Associate* **Evan Kudish**

Director of Institutional Giving **Martin Mansfield**  
Development Assistant **Arella Flur**

### **MARKETING & COMMUNICATIONS**

Director of Marketing & Communications **Nuri Héd**  
Marketing & Social Media Manager **Paige Stefanski**  
Content Marketing Associate **Christopher Castanho**  
Box Office Manager & Group Sales Manager **Jessica Bush**  
Associate Box Office Manager **Troy Gähns**  
Box Office Associate **Shalaine Thomas**  
BSC Berkshire Press Director **Charlie Siedenburg**  
BSC National Press Representative **The Press Room: Jim Byk | Kelly Guid**  
Digital Advertising **Capacity Interactive**

### **EDUCATION**

Director of Education/Director of Playwright Mentoring Project **Jane O'Leary**  
Community Engagement & EDI Coordinator **Sharron Frazier-McClain**  
Education Coordinator **Xinef Afriam**  
KidsAct! Lead Teaching Artists **Alister Austin | Allison Lerman-Gluck**  
KidsAct! Musical Director **Gaylan Palmer**  
KidsAct! Teaching Artists **Hannah Katz | Chynna Williams**  
PMP Artistic Mentors **Marcella Ferry | Joseph Gunn | Allison Lerman-Gluck**  
**Carli McGurn | Kelli Newby | Katharine Reid**  
PMP Peer Mentors **Amanda Bowman | Kiara Bresett | Christina Briggs | Karlee Cross**  
**Nollan Gageant | Evan Gardzina | Shannon Gwodszyk | Kevin Lempke | Chynna Williams**  
PMP Playwright Mentors **Sam LaFrage | Seth McNeill | Malia'Kekia Nicolini**  
**Jane Smith | Mark St. Germain**  
PMP Clinical Consultants **Deb Cole-Duffy | Lisa Tessier**

### **PRODUCTION**

Director of Production and Operations **Joseph Martin**  
Assistant Production Manager **Sarah Greenberg**  
Technical Director **Ben Reading**  
Shop Foreperson/Lead Carpenter **Katelyn Seymour**  
Lighting Supervisor **Wylder Cooper**  
Properties Supervisor/Painter **Sarah Greenberg**  
Audio Supervisor **Alex Berg**  
Wardrobe Supervisor **Caitie Martin**

### **BOARD OF DIRECTORS**

Mary Ann Quinson, <i>Board Chair</i>	Chris Dodig, <i>Vice President</i>		
Marita O'Dea Glodt, <i>President</i>	Bonnie Burman, <i>Secretary</i>		
Julianne Boyd, <i>Artistic Director</i>	Robert Youdelman, <i>Treasurer</i>		
Carole Burack	Sherwood Guernsey	Debra Jo Rupp	Roz Stuzin
Warren Dews, Jr.	Caroline Holland	David B. Schulman	Jodi Tartell
Reba Evenchik	Arnold Kotlen	Laurie Schwartz	David Tierney
Ralph Friedner	Rhoda Levitt	Richard Seltzer	Eleanore Velez
Alan H. Green	Sheila Richman	Mark St. Germain	Michael Zaccaro

### **BOARD EMERITI**

Sydelle Blatt	James A. Lapenn	Rosita Sarnoff
Kathleen Chrisman	Heather Nolin	Richard Solar
Marilyn "Mike" S. Faust	Roberta Olsen	Reid White
Jeananne Hauswald Harris	Robert Petricca	Eileen Young
Marcie Imberman	Robert K. Rosenthal, M.D.*	
James M. Lamme III*	Jude Sabot	*Deceased

# THANK YOU TO OUR GENEROUS DONORS!

We express our gratitude to the lead donors who have made gifts towards our programming between July 1, 2020 and April 25, 2021.

## **PRODUCING PARTNER (\$50,000+)**

Barr Foundation  
Sydelle and Lee Blatt  
Carole and Daniel Burack  
Bonnie and Terry Burman  
The Feigenbaum Foundation  
Elizabeth and Phill Gross  
in honor of Mary Anne Gross  
Klarman Family Foundation  
Rhoda and Morris Levitt  
Massachusetts Cultural Council  
Mill Town Capital  
Heather Nolin and  
Herbert A. Allen  
Mary Ann and Bruno A. Quinson  
The Shubert Foundation  
Jodi and Paul Tartell  
The Zelda and John Schwebel  
Family Foundation  
**ANGEL (\$10,000-24,999)**  
AJ Schnopp Jr.,  
Construction Company  
Alpern Family Foundation  
Arnhold Foundation  
The Avangrid Foundation  
Barrow Foundation  
Dr. Stephanie Beling  
Berkshire Taconic  
Community Foundation  
Berkshire United Way  
Hildi and Walter Black  
C.F. Adams Charitable Trust  
Kathleen and Neil Chrisman  
Michelle and Chris Dodig  
Violet and Chris Eagan  
Reba and Bruce Evenchik  
Renee and Steven Finn  
Deb and King Francis  
Anne and Larry Frisman  
Dr. Thomas M. Fynan and  
Mr. William F. Loutrel  
Ann and John Galt  
Greylock Federal Credit Union  
Dr. J. Ryan Gunsalus  
Madeline and Ian Hooper  
Jim and Joan Hunter

Judy and Marty Isserlis  
Athena and Richard Kimball  
Laurents/Hatcher Foundation  
InterAct for Change /  
Beth and Peter Levin  
Martha Locke  
in honor of David Prendergast  
The Donald McGraw Foundation  
/ Elizabeth and Robin McGraw  
Nelson Charitable Foundation  
Linda and Robert Noonan  
Mary and Philip Oppenheimer  
Nancy and Donald Osborne  
Marian and Marshall Raser  
Sheila and Harold Richman  
Bette Sue and  
Lawrence Rosenthal  
James M. Ruberto  
Debra Jo Rupp  
Carla and Ed Slomin  
Diane Troderman and  
Harold Grinspoon  
Karen and Bob Youdelman  
Cheryl and Michael Zaccaro  
**ARTISTIC CIRCLE (\$25,000-49,999)**  
Berkshire Bank  
Roxanne and Scott Bok  
Julianne and Norman Boyd  
Jeff Davis and Michael Miller  
Audrey and Ralph Friedner  
Marita and David Glodt  
The Green Foundation  
Sherwood Guernsey  
Leslie and Stephen Jerome  
Arnold Kotlen and  
Stephanie Fleckner  
Liz and George Krupp  
Rosita Sarnoff and Beth Sapery  
Carrie and David Schulman  
Laurie and Martin V. Schwartz  
Carol and Richard Seltzer  
Roz and Charles Stuzin  
**PRODUCER (\$7,500-9,999)**  
Judith and Richard Jacobs  
The Lese Family  
Carol and Alfred Maynard

## **DIRECTOR (\$5,000-7,499)**

Berkshire Roots  
The Gregory Bulger Foundation /  
Gregory Bulger and Richard Dix  
Carr Hardware  
Charles H. Hall Foundation  
The Dobbins Foundation  
Dwight Richard Odle Foundation  
The Fairbanks Family  
Charitable Foundation  
Mrs. Jo Ann and  
Dr. William Hajjar  
The Miami City Ballet  
in memory of Morris Levitt  
Pittsfield Cultural Council  
Emily Rechnitz  
Stephanie and Richard Solar  
Terry and Dr. Arthur Wasser  
Jessie Wolfson  
Mr. and Mrs. Carlo E. Zaffanella  
Richard M. Ziter, M.D.,  
and Eric Reimer  
**FOUNDER (\$2,500-4,999)**  
Carolyn and Mark Ain  
Gail Asarch and  
Dr. James Satovsky  
William J. and Margery S. Barrett  
Fund for Adams, Cheshire  
Bessie Pappas  
Charitable Foundation  
Betsy and Nathaniel Bohrer  
Jadwiga and Donald Brown  
The Charles L. Read Foundation  
Lynn and Joseph Cooper  
Elephant Rock Foundation  
Monroe B. England  
Olivia Georgia and Steve Oakes  
Virginia and James Giddens  
Health New England  
Susan Henshaw Jones and  
Richard Eaton  
James and Robert Hardman  
Fund for North Adams  
Joan and Paul Kopperl  
Diane and Darryl Mallah  
Debra Miersma and  
David Russell

Ann M. and Don Morrison  
 Claudia Perles  
 The Pittsfield Cooperative Bank  
 Marcia and Albert Schmier  
 Abby Schroeder  
 Arlene and Donald Shapiro  
 Jane and Martin Schwartz  
 Laurie and David Tierney  
 Linda and Ed Wacks  
**STAR (\$1,500-2,499)**  
 Carole and Richard Berkowitz  
 Glenna and Martin Bloom  
 Linda Benedict Colvin  
 Cynthia and Oliver D. Curme  
 Carol and Herbert Diamond  
 Ricki Gardner and  
 William Cavanagh  
 Lorna and Edwin A. Goodman  
 Gale and Dustin Griffin  
 Miriam and Ronald Hinds  
 Marianne and Richard Jaffe  
 Elaine and Daniel Katz  
 Dale and Dr. Steve Kulvin  
 Joyce and Jim Lapenn  
 Pamela Lichty  
 Beth and Adam Man  
 Barri R. Marks and Woody Exley  
 Alice McInerney  
 Nancy McIntire  
 Mary Ellen and John O'Connor  
 Judith Robins  
 Milton Rubin and  
 Barbara Mandler  
 Marjorie Safran and  
 Jeffrey Leppo  
 Heidi and Robert Schwartz  
 Kathy and Joel Segall  
 Enid Michelman and  
 Arthur Sherman  
 Katherine and  
 Thomas Shoemaker  
 Nancy and Stanley Singer  
 Annaliese Soros  
 Roger Tilles  
 Phyllis Topchik  
 Judy Ann Wade  
 Cynthia and Tucker Welch  
 Susan and Geoffrey Woglom  
 Ray Ellen and Allan Yarkin  
 in honor of Roz Stuzin

**LEADER (\$1,000-1,499)**  
 Anonymous  
 The Ansin Foundation  
 in memory of Morris Levitt  
 Stephanie Ansin and  
 Spencer Stewart  
 in memory of Morris Levitt  
 Shari and Stephen Ashman  
 The Barrington Foundation  
 Barnett and Anne Berch  
 Foundation  
 Marjorie and Barry S. Berg  
 Jane Braus  
 John Capizzi and Glenn Riddell  
 in honor of Marita Glodt  
 Christine and Larry Carsman  
 Nardyne and Dick Cattani  
 Kay and Elliot Cattarulla  
 Marietta Rapetti Cawse and  
 James N. Cawse  
 Miriam Cohen  
 Karen Conlin and  
 Raymond McGarrigle  
 Susan and Anthony Cook  
 Cory and Bob Donnalley  
 Charitable Foundation  
 Robert Donnalley and  
 Joan Weingarten  
 Janet and John Egelhofer  
 Beth and Rich Fentin  
 Florence and Michael Freedman  
 Barbara and David Garlock  
 The Frederick H. Gilmore Fund  
 Robert and Ann Stephanie  
 Gittleman Charitable Fund  
 Renee and Neal Goff  
 Carol and Joseph Green  
 Karen and Werner  
 Gundersheimer  
 Herbert and Ruby Halperin  
 and Family  
 in memory of Morris Levitt  
 Hickrill Foundation,  
 Denie and Frank Weil  
 Barbara J. Hill  
 Harriet and Leonard Holtz  
 Patricia Hyde  
 Adam Irick and Milton Lestz  
 Carol and George Jacobstein  
 Howard P. Kagan  
 Pat Kennelly and Edward Keon

Deborah and William Kurz  
 Willa Lewis and Edward Moulin  
 Susan and David Lombard  
 J.H. Maxymillian, Inc.  
 Nancy McIntire  
 The Messenger Foundation  
 Jacqueline and Jaan Metsma  
 Catherine B. Miller  
 Adam Mirabella  
 in honor of David Prendergast  
 Suzanne F. Nash  
 Sally Ourieff and Bruce Zetter  
 David Paget  
 David Pierce  
 in honor of Harriet Harris  
 Penny and Claudio Pincus  
 Diane and Arthur Provenz  
 Elisif and Tim Quinson  
 Randi Rossignol  
 Linda and Frank Russell  
 Vicki and Bruce Safran  
 Susan and Ron Schain  
 Raquel and Michael Scheck  
 Liz Schneider and Ben Liptzin  
 Carol and Marvin Schwartzbard  
 Ms. Joan Schwartzman and  
 Dr. Norman Atkin  
 Joel Shapiro  
 Rita and Harvey Simon  
 Mark St. Germain  
 Anne M. and William Tatlock  
 Sheila Terens  
 John A. and Kathi Blatt Thonet  
 Barbara and Eugene Trainor  
 The Velmans Foundation  
 in memory of Loet Velmans  
 Karen and Harry Waizer  
 Paula and Stan Walczyk  
 Ward's Nursery  
 Harriet and Melvin Warshaw  
 Audrey Weiner and Jeffrey  
 Solomon  
 Laird and Reid White  
 Linda Zukowski

*Many thanks to the patrons  
 who are supporting us with  
 smaller gifts which are too  
 numerous to mention.*

# BSC THANKS FOUNDING LEGACY SOCIETY MEMBERS WHO ARE PROVIDING FOR OUR STRONG FUTURE

Sydelle and Lee Blatt	Marita and David Glodt	Mary Ann and Bruno A. Quinson
The Boraski Family Children's Fund	Sherwood Guernsey	Mickey and Norman Resnick
Claudia A. Brown	June M. Guertin*	Sheila and Hal Richman
Carole and Dan Burack	Rhoda Herrick*	Carrie and David Schulman
Bonnie and Terry Burman	Arnold Kotlen	Laurie and Martin V. Schwartz
Michelle Clarkin	Morris* and Rhoda Levitt	Karen Watkins
Moe England*	The Lowenstein Foundation	Stephen and Sally Wittenberg
Stuart M. Fischman, Esq.	Nancy and Donald H. Osborne	Karen and Bob Youdelman
Audrey and Ralph Friedner	David Prendergast*	Cheryl and Michael Zaccaro

\*Deceased

## BUSINESS PARTNERS

BSC is grateful to our local Business Partners



## SUPPORT BARRINGTON STAGE

We live in extraordinary times. By donating to Barrington Stage Company, you are playing a very real and critical role to ensure that world-class theatre continues to thrive in the Berkshires.

We **THANK YOU** for your faith and support in our theatre at this very challenging time!

### HERE ARE SOME OF THE WAYS YOU CAN PLAY A STARRING ROLE

Support our **Annual Fund**

**Provide a Scholarship** and change a student's life

**Attend our annual Gala** in the Berkshires or **BSC>NYC** in the fall

Support the **Julianne Boyd New Works Fund** and bring new voices to the stage

**Become a Sponsor** of a show or cabaret

Join the **Volunteer Guild**

Become a **Business Partner**

Advertise in our **Season Playbill**

Make a lasting gift and join our **Legacy Society**

**BarringtonStageCo.org/Donate • 413.997.6115**

For more information, please contact **Jessica Provenz**, Director of Development,  
at 413.997.6110 or [JProvenz@BarringtonStageCo.org](mailto:JProvenz@BarringtonStageCo.org).

# COMING TO BARRINGTON STAGE COMPANY IN 2022



BOYD-QUINSON STAGE

*Music & Lyrics by various artists  
Conceived by Richard Maltby, Jr.  
and Murray Horwitz*

*Directed & Choreographed  
by Camille A. Brown*

*Co-production with  
Westport Country Playhouse*

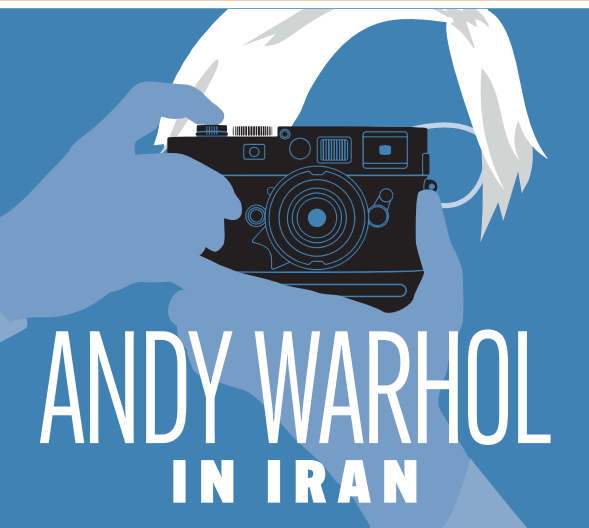
**AUGUST 5-23**

*"Ms. Brown is one of the most  
expressive, genuine and deeply felt  
choreographers working today."*

*- THE NEW YORK TIMES*

**WINNER OF  
10 TONY AWARDS**

This evening of unforgettable music made famous by Fats Waller includes "Honeysuckle Rose," "Your Feet's Too Big," "The Joint is Jumpin'" and "Tain't Nobody's Biz-ness If I Do," to name a few. Join us for these rowdy, raunchy and humorous songs that capture the love, longing and zest for life of 1920s Harlem, reimagined by the incomparable director/choreographer **Camille A. Brown** (2019 Tony Nominee for Best Choreography, *Choir Boy*).



ST. GERMAIN STAGE

*By Brent Askari*

**MAY 26-JUNE 18**

**WORLD  
PREMIERE**

In 1976, the artist **Andy Warhol**, having re-invented himself as the portrait painter of the rich and famous, travels to Tehran to meet the Shah of Iran's wife, the Empress Farah Pahlavi. In *Andy Warhol In Iran*, the iconic American painter visits the country to take Polaroids

of the Empress, see the crown jewels and eat cheap caviar — only to encounter a young revolutionary who throws his plans into turmoil.

**SUBSCRIPTIONS AVAILABLE, VISIT [BARRINGTONSTAGECO.ORG/PASS](https://barringtonstageco.org/pass)  
OR CALL 413.236.8888 FOR MORE INFORMATION**



June 18 – July 10  
at The Unicorn Theatre

**LIMITED**

# THE IMPORTANCE OF BEING EARNEST

by Oscar Wilde  
directed by David Auburn

July 23 – August 15  
Outside Under the Big Tent  
in The Colonial Theatre Parking Lot

# THE WIZARD OF OZ

directed by E. Gray Simons III  
music direction by Jacob Kerzner  
choreography by Isadora Wolfe

December 2–23

at The Colonial Theatre  
BTG's Pittsfield Campus  
111 South Street, Pittsfield

*Irving Berlin's*

# White Christmas

*The Musical*

based upon the Paramount Pictures Film  
written for the screen by Norman Krasna,  
Norman Panama and Melvin Frank  
music and lyrics by Irving Berlin  
book by David Ives and Paul Blake  
directed by Gregg Edelman  
music direction by Ross Patterson  
choreography by Gerry McIntyre

BerkshireBank  
COLONIAL THEATRE  
MASS Cultural Council  
SHUBERT FOUNDATION

UNICORN · COLONIAL · FITZPATRICK  
**BERKSHIRE**  
THEATRE GROUP  
[www.BerkshireTheatreGroup.org](http://www.BerkshireTheatreGroup.org)  
(413) 997-4444

<p>July 9</p> <p><b>CAROLEE CARMELLO</b> MY OUTSIDE VOICE</p>	<p>July 10</p> <p><b>KRYSTA RODRIGUEZ</b> IN CONCERT</p>	<p>Aug. 21</p> <p><b>STEPHANIE J. BLOCK</b> RETURNING HOME</p>	<p>Aug. 28</p> <p><b>KATE BALDWIN &amp; GRAHAM ROWAT</b> DRESSED UP AGAIN</p>	<p>Sept. 4</p> <p>AN EVENING WITH <b>RACHEL BAY JONES</b></p>
---	--	--	---	---

UNICORN · COLONIAL · FITZPATRICK  
**BERKSHIRE**  
THEATRE GROUP

(413) 997-4444  
[www.BerkshireTheatreGroup.org](http://www.BerkshireTheatreGroup.org)  
The Colonial Theatre • 111 South Street, Pittsfield, MA  
The Main Stage • 83 East Main Street, Stockbridge, MA  
The Unicorn Theatre • 6 East Street, Stockbridge, MA

# SHAKESPEARE & COMPANY

## 2021 SUMMER SEASON

### **KING LEAR**

by William Shakespeare  
Featuring Christopher Lloyd  
JULY 2 – AUGUST 28

### **BECOMING OTHELLO: A BLACK GIRL'S JOURNEY**

by Debra Ann Byrd  
JULY 16 – 25

### **ART**

by Yasmina Reza  
Translated by Christopher Hampton  
JULY 30 – AUGUST 22

*A Workshop Production*

### **MEASURE FOR MEASURE**

by William Shakespeare  
SEPTEMBER 1 – 5

### **hang**

by debbie tucker green  
SEPTEMBER 10 - OCTOBER 3

### **THE CHAIRS**

by Eugène Ionesco  
OCTOBER 8 – 31

**"stage magic"**  
- TheaterMania

**"Exceptional"**  
- The Wall Street Journal

**"Bold, Brave...  
Exhilarating"**  
- BroadwayWorld



MaConnia Chesser and Jennie M. Jadow,  
*The Merry Wives of Windsor*, 2021, Photo by Zachary de Silva

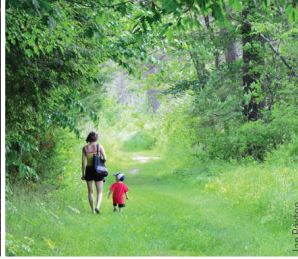
**SHAKESPEARE.ORG**

**413.637.3353**

# LOVE PITTSFIELD

downtown & beyond

EXPERIENCE  
PITTSFIELD.  
SO MUCH TO LOVE!



Nightlife + Arts • Outdoor Fun • Dining • Unique Shopping  
Calendar of Events • Downtown Happenings • Deals + more!

**Explore everything to love about Pittsfield:**

**LOVEPITTSFIELD.COM** **DOWNTOWNPITTSFIELD.COM**

## THE HILLS ARE ALIVE AT THE BERKSHIRE JEWISH FILM FESTIVAL

July 5–August 23, 2021

[BerkshireJewishFilmFestival.org](http://BerkshireJewishFilmFestival.org)  
[info@berkshirejewishfilmfestival.org](mailto:info@berkshirejewishfilmfestival.org)



Generous support from the Wolfson Family Foundation,  
John Bergman Charitable Trust, Greylock Federal Credit Union, Berkshire Bank, MountainOne,  
Spitz-Tuchman Charitable Trust and Harold Grinspoon Foundation

**“One of America’s best historic homes”**

—Architectural Digest



## THE MOUNT

EDITH WHARTON'S HOME

Book online at  
[EdithWharton.org](http://EdithWharton.org)

Lenox, MA • 413-551-5111

BERKSHIRE BOTANICAL GARDEN

# Taking Flight

The best of the Berkshires  
on 24 beautiful acres featuring  
flight-themed exhibits, events  
and family activities.

**MUSIC MONDAYS**  
**THROUGH SEPTEMBER 20**

Live Music in the Garden After-hours  
in Lucy's Topiary Garden

**HARVEST FESTIVAL** **OCTOBER 9-10**

Continuing an 87-year tradition  
on Columbus Day Weekend!



5 West Stockbridge Road,  
(Routes 102/183)  
Stockbridge, MA  
413.298.3926

[www.berkshirebotanical.org](http://www.berkshirebotanical.org)

*The escape you've been waiting for!*

## ENCHANTED: A HISTORY OF FANTASY ILLUSTRATION

Premiering June 12

## LAND OF ENCHANTMENT: FANTASTICAL SCULPTURES

Opening July 10

Across the magical Museum grounds.



James Gurney, Garden of Hope, 1995 ©James Gurney

# NORMAN ROCKWELL MUSEUM

NRM.org • Stockbridge, MA • 413.298.4100 • KIDS & TEENS FREE!

# BERKSHIRE MUSIC SCHOOL

Celebrating 80 Years of Spreading the Joy of Music  
throughout The Berkshires!

All Instruments – All Ages – All Levels  
In-person & Online Lessons Available



30 Wendell Avenue, Pittsfield, MA. 01201  
[www.BerkshireMusicSchool.org](http://www.BerkshireMusicSchool.org)  
413-442-1411

**ROOTS  
RISING**



**PITTSFIELD FARMERS MARKET**

Saturdays, 9am - 1pm on The Common  
[farmersmarketpittsfield.org](http://farmersmarketpittsfield.org)

The first teen-run market in the region and the first year-round market in Berkshire County.



**YOUTH CREWS**

Spring, Summer and Fall Farm Crews  
Graduate-level Market Crew

We hire Pittsfield teens to work in Crews on farms, in food pantries and at our own farmers market.

*Empowering youth and building community through food and farming.*

**[rootsrising.org](http://rootsrising.org)**

# CHESTER THEATRE COMPANY

## TITLE AND DEED

by Will Eno  
June 16-27



by Eleanor Burgess  
July 14-25

## TINY BEAUTIFUL THINGS

by Nia Vardalos  
August 18-29



## CHESTER@HANCOCK

All performances will be on the beautiful grounds of Hancock Shaker Village in Pittsfield, MA

[chestertheatre.org](http://chestertheatre.org)

## SEASON 85 at *Weston* A return to live performance



WESTON PLAYHOUSE  
THEATRE COMPANY  
Weston, VT • [westonplayhouse.org](http://westonplayhouse.org)

## Mac-Haydn Theatre

2021 Season

[WWW.MACHAYDNTHATRE.ORG](http://WWW.MACHAYDNTHATRE.ORG)  
(518) 392-9292

JUL 29-AUG 8

## PIPPIN

AUG 12-22

## STARBUCKS LOVES ME

AUG 26-SEP 5

## MAN OF LA MANCHA

SEP 10-OCT 3

## the WORLD GOES ROUND

SEP 11-OCT 2

## BEEHIVE

DEBUT CHILDREN'S SHOW!  
AUG 20 & 21, 27 & 28

## The Most Incredible Thing

The summer continues into September with unique concerts and performances, visit our website for details.

AUG 18, SEP 10 & 17

*Still Within the Sound of My Voice:*  
*The Songs of Linda Ronstadt*  
Elizabeth Ward Land

SEP 4, 15, 22 & 29

Showstoppers  
Mac-Haydn Company

SEP 1 & 29

*Exiled:*  
*The Evolution of Kurt Weill*  
James Benjamin Rodgers

SEP 15 & 22

*Laura's at the Helm*  
Laura Helm

SEP 24 & OCT 1

*toUch Performance Art*



the *Bidwell House*  
museum

**EARLY BERKSHIRE HISTORY**  
▶ [bidwellhousemuseum.org](http://bidwellhousemuseum.org)



the **Marketplace**

Whether it be a great bite before the show or a catering platter for the office, we've got you covered.

- Breakfast
- Lunch
- Supper
- Gluten-free and Vegan options!

Pittsfield Cafe      Sheffield Cafe  
53 North St          18 Elm Ct  
GB Kitchen Table  
240 Stockbridge Rd



**HOT HARRY'S**  
= FRESH BURRITOS =

37 North Street · Pittsfield, MA 01201  
413-448-6155  
Fax: 413-443-7050

visit us online at  
[www.hotharrysburrITOS.com](http://www.hotharrysburrITOS.com)




LOCAL PRODUCTS & INGREDIENTS  
FRESH ORGANIC JUICE  
& SMOOTHIE BAR  
FARM FRESH SALADS  
SANDWICHES · WRAPS · PANINIS  
LOCAL COFFEE & ESPRESSO DRINKS  
"GRAB & GO'S" · CATERING

[www.wrapcafes.com](http://www.wrapcafes.com) · 413-499-3414





**Patrick's Pub**  
pittsfield, ma

**Fresh Food at a Great Price!**

**Open Lunch & Dinner**      **Reservations Accepted**

*Homemade Soups · Salads · Wraps · Burgers*  
*Entrees · Weekly Specials*

**16 Beers on Draft    Great Drink Specials    Gluten Free Options**

**On Park Square ♦ (413) 499-1994 ♦ [patrickspubpittsfield.com](http://patrickspubpittsfield.com)**



*Chocolate Springs*<sup>™</sup>  
CAFÉ

SERIOUS HOT  
OR ICED CHOCOLATE  
GOURMET GELATO  
AND TREATS  
HAND CRAFTED  
IN THE BERKSHIRES  
OPEN 7 DAYS A WEEK

*Escape into Chocolate*<sup>™</sup>

55 PITTSFIELD/LENOX ROAD  
ROUTE 7, LENOX MA  
413-637-9820  
[CHOCOLATESPRINGS.COM](http://CHOCOLATESPRINGS.COM)

The winner for best  
homemade frozen  
yogurt goes to .....



and the winner for  
best handcrafted  
pizza goes to.....



Find us at 505 East Street Pittsfield MA

@ayelada

@crustpz

(413) 344-4126

(413) 464-7977

*PAUL RICH & SONS*  
FURNITURE | MATTRESSES | DESIGN

DOWNTOWN PITTSFIELD | DELIVERY ANYWHERE | PAULRICH.COM

The advertisement features a photograph of a modern living room. In the center is a white sofa with several pillows, including two white ones and two green ones. A small green plant sits on a low, dark wood coffee table in front of the sofa. To the left and right of the sofa are two wooden armchairs with red and white floral patterned upholstery. The background shows a dark wood door and a window with white curtains. The overall aesthetic is clean and sophisticated.



**BERKSHIRE ROOTS**

Cultivation at Elevation

**AWARD-WINNING  
PREMIUM CANNABIS**

501A Dalton Avenue, Pittsfield

[www.BerkshireRoots.com](http://www.BerkshireRoots.com)



Planet  
Yoshi Yoshi  
Elliot Lauren  
Banana Blue  
Elemente Clemente  
Henry Christ  
Indies  
Issey Miyake  
Pete  
Project J  
Art Point  
Mac Jeans  
Alembika  
Angela Caputi  
Lamberto Losani  
BAOBAO  
Matti Mamane  
Beate Heymann  
Krazy Larry  
Robert Graham

**CASABLANCA**

*Lenox, MA*  
Clothing and Accessories  
for Women and Men  
50 Church St.  
413.637.2680



Alison Sheri • Jillinova • Michael Tyler Part  
Two • True Blue • Trisha Tyler  
Katherine Barclay • Socksmith • Dolcezza

**THE BEST  
KEPT SECRET  
IN LENOX**

**S  
W  
T  
R  
Z**

**SWEATERS!**

**COOL TOPS FOR *MOSTLY* UNDER  
100 BUCKS**

38 CHURCH ST., LENOX, MA



OST  
GREYLIN  
PORTO  
LIVERPOOL  
NALLY & MILLIE

**GB9**

DAME  
ERIC MICHAEL  
BOS & CO  
KORK EASE

**CONTEMPORARY FASHION  
AND FOOTWEAR IN THE  
HEART OF GREAT BARRINGTON**

9 RAILROAD STREET  
GREAT BARRINGTON




**SHOOZ**

Beautifeel Flex  
Summit Sacha London  
Fly London Ara  
Arche Jambu  
Cougar Miz Mooz  
Sorel Brenda Zaro  
Wolky UBU  
Earth M. Rena  
Vaneli  
Sofft  
Bussola  
Naot

44 Housatonic Street Lenox, MA  
413-637-1118 *Open seven days*

**"I get a kick out of shooz!"**



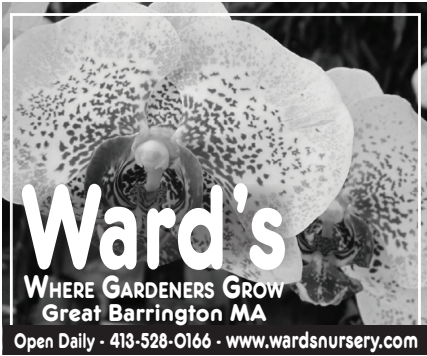



**annie selke**  
 PINE CONE HILL | DASH & ALBERT  
 annieselke.com

ANNIE SELKE SHOP | THE OUTLET @ PINE CONE HILL  
 36 MAIN ST, LENOX, MA | 125 PECKS RD, PITTSFIELD, MA



**GUIDO'S FRESH MARKETPLACE** #artfeedsus  
 foraging for you LOCATED ALONG RTE 7 PITTSFIELD & GB @GUIDOSFRESHMARKETPLACE



**Ward's**  
 WHERE GARDENERS GROW  
 Great Barrington MA  
 Open Daily - 413-528-0166 - www.wardsnursery.com

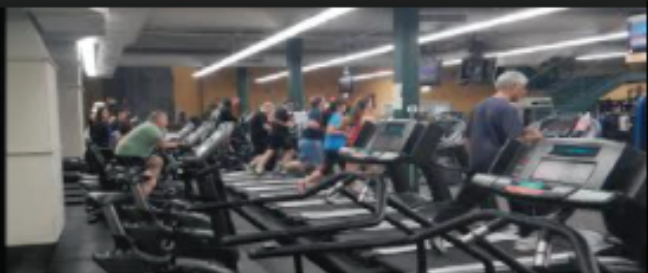
Get hooked on retirement income planning, today.

**B** *Balanced Approach...Rock Solid Advice*  
**BALANCE ROCK INVESTMENT GROUP** Dave Milligan ■ Jon Meczywor  
 www.balance-rock.com  
 378 South St., Pittsfield 413.442.8190  
 Securities and advisory services offered through LPL, a registered investment advisor, member FINRA/SIPC

**Guardian**

**Engage us. Excite us.  
 Entertain us. Challenge us.**

The Guardian Life Insurance Company of America | guardianlife.com  
 Guardian® is a registered trademark of The Guardian Life Insurance Company of America, New York, NY 2021-117242 (03/23) | New York, NY



## **As a full service health club, the Berkshire Nautilus features:**

Two full floors of exercise equipment

Over 50 cardiovascular machines

Three different lines of strength training equipment,  
including Nautilus, Magnum, and Arcuate machines.

Complete Synergy Functional Fitness Circuit

Weekly classes including Serious Cycle, Yoga, Pilates  
HIIT, Body sculpting and more.

Over 50 pieces of cardiovascular equipment highlighting  
both upper and lower body exercise and rehabilitation

Largest free weight floor in the Berkshires.

Spacious locker rooms with  
separate steam, sauna, and hot tubs

Certified staff of personal trainers

# **Berkshire Nautilus**

Building Healthier Lives Through Exercise

42 Summer Street, Pittsfield, MA, 01201

413-499-1217

# ~ The Fitness Store ~

Home and Commercial  
Fitness Equipment  
Sales and Service



Treadmills  
Home Gyms  
Free Weights  
Exercise cycles  
Elliptical Trainers  
Benches, Racks and More

Take the guesswork out of outfitting your home gym.

Buy from the Experts, Fitness specialists

Inside the **Berkshire Nautilus**

42 Summer St.

Pittsfield Ma. 01201

413 499-1217

**The Fitness Store**

42 Summer Street

Pittsfield, MA

413-499-1221





# BERKSHIRE YOGA

## DANCE & FITNESS

*Find Joy Through Movement*



## Outdoors & Online

at the most beautiful spots in The Berkshires

- Group Classes for all levels
- Special Workshops and Events
- Private Sessions - outdoors or on location

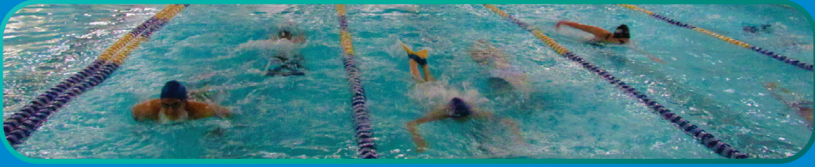
*New Students - 30 Days of Unlimited Joy for just \$59*

---

**Voted Best Yoga Studio in The Berkshires**

To register visit: [www.BerkshireOutdoorYoga.com](http://www.BerkshireOutdoorYoga.com)





**When you join Berkshire Family YMCA, you're committing to more than simply becoming healthier. At the Y, children learn what they can achieve, families spend quality time together, and we all build relationships that deepen our sense of belonging ... strengthening our community.**

**For more than a workout. For a better us.**

**WE WELCOME ALL SIZES ALL COLORS  
ALL GENDERS ALL BELIEFS ALL RELIGIONS  
ALL TYPES ALL PEOPLE EVERYONE**

**YOU BELONG HERE**

**JOIN > GIVE > VOLUNTEER > [BFYMCA.ORG](http://BFYMCA.ORG)**



**FOR YOUTH DEVELOPMENT®  
FOR HEALTHY LIVING  
FOR SOCIAL RESPONSIBILITY**

# B E R K S H I R E

Aimee Marshall, Owner NASM, ACE, E-RYT

FITNESS **B F W** WELLNESS



bfwstudio.com  
137 NORTH ST.

413-885-1633  
PITTSFIELD, MA

State of the art fitness equipment | Pilates Apparatus

Personal Training | Official Spinning Studio

Air conditioned studios with free towels and water

Minutes away at 137 North Street! | Convenient Parking

47 class offered weekly (including Yoga)



## Investing in What Can Be

At Berkshire Bank, we're committed to investing in the success and vibrancy of our local communities. By providing financial support, embracing the power of our employees, and creating sustainable business practices, it's our goal to transform possibilities into a brighter reality for the people and places we serve.



## Experience provides perspective

**W**hat you see differs from how you see. When experience encourages you to recognize details others may miss, you gain a perspective that can make a difference.



Have a conversation with our managing director, Gary Schiff, and his team at October Mountain Financial Advisors.



103 West Park Street  
Lee, MA 01238  
(413) 243-4331

[www.octobermountainfa.com](http://www.octobermountainfa.com)

Member SEC, FINRA, SIPC

**MAX**  
ULTIMATE FOOD

(617) 427-9799  
10 Newmarket Square,  
Boston, MA 02118

[www.maxultimatefood.com](http://www.maxultimatefood.com)

— *Established 1962* —

# A.J. SCHNOPP, JR.

## CONSTRUCTION INC.

LICENSED AND INSURED

### DESIGN / BUILD

Custom Homes  
Residential & Commercial  
Construction

*Family Owned and Operated  
Serving Berkshire County*

Gregory Schnopp  
Andrew Schnopp

(413) 684-2374

Website:  
ajschnopp.com

## The Show Must Go On

WAMC Proudly  
Supports the Arts

Always in Reach  
On air, online and on the WAMC app

**WAMC** NORTHEAST  
PUBLIC RADIO

# Attentive

engineering - architecture  
civil/survey - planning

engineers  
architects  
planners

[www.hillengineers.com](http://www.hillengineers.com)  
50 Depot St. Dalton, MA 01226 | 413-684-0925  
44 Spring St. Adams MA 01220 | 413-741-0013

# E. Caligari and Son

EVERYTHING INTERIOR

PAINT | FLOORING |  
WINDOW TREATMENTS | WALLPAPER

75 Main Street, Great Barrington, MA 01230  
413-528-0038 [www.ecaligari.com](http://www.ecaligari.com)

## Welcome Back Barrington Stage Company!

The heart and soul of the Berkshires is theatre, and enjoying these enriching, shared experiences **together**.



**zogics**



**SECOND NATURE  
GARDEN DESIGN**

DESIGN - INSTALL - SUSTAIN  
Distinctive Landscapes & Stonework

secondnaturegardens.org  
413.441.7836 | Richmond MA

### ALARMS

of BERKSHIRE COUNTY

We are known...  
by the Company we keep

Clark Art Institute  
Tanglewood  
The Eric Carle Museum  
Berkshire Museum  
Barrington Stage  
Norman Rockwell Museum  
And a host of satisfied Homeowners

alarmsofberkshirecounty.com

24-hour UL Listed Monitoring  
Security, Fire, Low Temperature,  
Carbon Monoxide, Surveillance  
iPhone/Android Compatibility

326 Springside Avenue  
413-445-4030 800-370-2525

MA Lic# 1489C  
NY Lic # 12000184861

## BERKSHIRE PROPERTY AGENTS.COM

BERKSHIRE COUNTY  
413 528 6800

COLUMBIA COUNTY  
518 325 6800

SMART  
SERVICE  
AND  
TARGETED  
MARKETING

To advertise in our program,  
please contact

**Marketing@BarringtonStageCo.org**

To donate or become a business partner,  
please contact

**Development@BarringtonStageCo.org**

# HOTEL ON NORTH

## THE REVIEWS ARE IN

And once again Hotel on North is *the* place to visit when taking in the Barrington Stage Company's new season. Located just around the corner from the theater's main stages, our nationally acclaimed accommodations offer a blend of urban sophistication and 19th Century elegance unsurpassed in the Berkshires.

297 north street  
pittsfield, ma  
413 358 4741  
[hotelonnorth.com](http://hotelonnorth.com)

**LH**  
**LakeHouse**



**Luxury Waterfront Boutique Inn**



**CLOSE TO ALL BERKSHIRE ATTRACTIONS**  
**lakehouseinnlee.com | 413-243-6290**

BERKSHIRE MOUNTAIN DISTILLERS PRESENTS

THE CRAFT 

BREWERS

*Whiskey* PROJECT

BERKSHIRE MOUNTAIN DISTILLERS

[CraftBrewersWhiskeyProject.com](http://CraftBrewersWhiskeyProject.com)

BALDERDASH  
CELLARS 

wicked wines & tall tales™





**BIG ELM**  
BREWING

**BREWED**  
for  
**EVERYONE**

**IPA**

**Blueberry & Vanilla**

**413**

**STOUT**

**Taproom Open Thurs - Sunday Noon till 7pm**  
**Samplers / Pints and Beer to Go!**  
**65 Silver Street, Sheffield, MA 413.229.2348**



*Experience the Berkshires' Premier Wine, Spirits, Craft Beer & Cheese Shop*

**SPIRITED**  
wine • food • spirits

Jim Nejaime, Wine Merchant  
444 Pittsfield Road  
Lenox, MA 01240  
413.448.2274

**Visit [SPIRITED-WINES.COM](http://SPIRITED-WINES.COM)**  
**for convenient ordering**  
**Curbside Pickup, Delivery & Shipping**  
**Or come in to our shop!**

**THE BERKSHIRE EAGLES**  
**Best**  
of the  
**Berkshires**  
**2020**