

BARRINGTON STAGE COMPANY

JULIANNE BOYD, ARTISTIC DIRECTOR

AND
Carla and Ed Slomin

PRESENT

ELEANOR

BY
Mark St. Germain

STARRING
Harriet Harris

SCENIC DESIGNER COSTUME DESIGNER LIGHTING DESIGNER SOUND DESIGNER
Brian Prather Alejo Vietti Philip S. Rosenberg Eddy Mineishi

WIG DESIGNER PRODUCTION STAGE MANAGER CASTING
**Mary Schilling-Martin Renée Lutz Pat McCorkle, CSA;
Nathan Francis; Rebecca Weiss**

BERKSHIRE PRESS REPRESENTATIVE NATIONAL PRESS REPRESENTATIVES DIGITAL ADVERTISING
Charlie Siedenburg The Press Room Capacity Interactive

DIRECTED BY
Henry Stram

SPONSORED IN PART BY
Anne and Larry Frisman & Arnold Kotlen and Stephanie Fleckner

Eleanor was commissioned by Florida Studio Theatre, Richard Hopkins, Artistic Director

BOYD-QUINSON STAGE
JULY 16–AUGUST 7, 2021

MC Mass
Cultural
Council

THE
SHUBERT
FOUNDATION

TIME & PLACE

Rock Creek Cemetery, Washington, D.C.
Past and Present: Spring, Summer, Fall, Winter

CAST

Eleanor Roosevelt..... Harriet Harris*

STAFF

Production Stage Manager..... Renée Lutz*
Stage Management Intern..... Emma Nafz
Master Electrician/Board Operator..... Liz Schweitzer
Sound Engineer..... Travis Byrne
Deck Chief..... Deanna Kahn
Wardrobe Supervisor..... Caitie Martin



*Actor and Stage Manager are
members of Actors' Equity Association.



The Director is a member of the
STAGE DIRECTORS AND CHOREOGRAPHERS
SOCIETY, a national theatrical labor union.

CAST



HARRIET HARRIS (Eleanor Roosevelt) BSC: *The Royal Family of Broadway, Sweeney Todd*. Broadway: *It Shoulda Been You, Cinderella, Cry-Baby, Present Laughter, Old Acquaintance, Thoroughly Modern Millie* (2002 Tony and Drama Desk Awards), *The Man Who Came to Dinner*. Off Broadway: *Me and My Girl* (City Center Encores), *Judgement Day, The Low Road, The Roads to Home, Little Me* (City Center Encores), *Standing on Ceremony, Yeast Nation, Jeffrey* (Drama Desk nomination), *Bella, Belle of Byelorussia* (Drama Desk nomination). Film: *Baby, Phantom Thread, Love is Strange, Memento, Nurse Betty, Addams Family Values*. TV: *American Horror Story, Hollywood, Ratched, Atlantic Crossing, Felicia Tillman on Desperate Housewives, Bebe Glazer on Frasier*.
[@msharrietharris](mailto:msharrietharris) HarrietHarrisActress.com

CREATIVES

MARK ST. GERMAIN (Playwright) Associate Artist. BSC: *Gertrude and Claudius* (2019), *Typhoid Mary* (2018), *Camping With Henry and Tom* (2016—Outer Critics Circle and Lucille Lortel Awards), *Dancing Lessons* (2014), *Scott and Hem in the Garden of Allah* (2013), *Dr. Ruth, All the Way* (2012), *The Best of Enemies* (2011), *Freud's Last Session* (2009/2010), *The Collyer Brothers/Period Piece* (2008), *The God Committee* (2004) and *Ears on A Beatle* (2003). *The Best of Enemies* received its world premiere on BSC's Boyd-Quinson Stage in 2011 and became the theatre's best-sold play of all time. Mark wrote *Freud's Last Session*, which became Barrington Stage Company's longest-running play and moved Off Broadway where it played for two years. Other plays include *Out of Gas on Lover's Leap, Relativity, George Washington's Teeth* and *Wednesday's Child*. His latest, *DAD*, was seen this summer at the Great Barrington Public Theater. With John Markus, Mark wrote the musical comedy *The Fabulous*

Lipitones, the musicals *The Gifts of the Magi* and *Johnny Pye* with Randy Courts. He co-wrote the screenplay for Carroll Ballard's Warner Brothers film *Duma* and co-produced the documentary *My Dog, An Unconditional Love Story*. Mark's book, *WALKING EVIL – How Man's Best Friend Became My Worst Enemy* will be available in August at Amazon. He is member of the Dramatists Guild and the Writers Guild East. Mark is also a Founding Board Member of the Barrington Stage Company.

HENRY STRAM (Director) is an actor who has appeared on Broadway in *Network*, *Junk*, *The Elephant Man* (and at Theatre Royal Haymarket, London), *Inherit the Wind*, *The Crucible* (2002) and *Titanic*. Recent Off Broadway: *The Headlands* (LCT3); *Judgment Day* and *The Hairy Ape* (Park Avenue Armory); *Posterity* (Atlantic); *Fly By Night* (Playwrights Horizons); *Antony and Cleopatra* (Public and RSC); *The Illusion* (Signature). Film: *Ben is Back*, *Irrational Man*, *Cradle Will Rock*, *The Grey Zone*. TV: *The Gilded Age*, *The Good Fight*, *White Collar*, *Smash*, *Law & Order*. Henry is the recipient of an OBIE Award for Sustained Excellence. He is a graduate of Juilliard and is thrilled to be working with his brilliant classmate and beloved friend Harriet Harris on this project.

BRIAN PRATHER (Scenic Designer) Associate Artist. BSC: *Into the Woods*; *Time Flies and Other Comedies*; *The Glass Menagerie*; *A Doll's House, Part 2*; *Typhoid Mary*; *Ragtime*; *American Son*; *Breaking the Code*; *Dr. Ruth, All the Way*; *Freud's Last Session*; *A Streetcar Named Desire*; *The Burnt Part Boys* and many others. Recent Off Broadway: *Daniel's Husband*, *Widowers' Houses*, *A Christmas Carol*, *Becoming Dr. Ruth*, *The Memory Show*, *Freud's Last Session*, *Nymph Errant*, *The Burnt Part Boys*. International: Chung-mu Hall (South Korea). Regional and other: Alley Theatre, Goodspeed Musicals, Virginia Rep., Broad Stage, Mercury Theatre, Delaware Theatre Co., Shakespeare on the Sound, Capitol Rep. Regional Emmy nominee, Jeff Award and multiple BTCA Award winner. Resident Designer at TheaterWorks Hartford. brianprather.com

ALEJO VIETTI (Costume Designer) BSC: *The Royal Family of Broadway*, *Sweet Charity*, *Follies*, *The Human Comedy*, *Travels with My Discontent*, *Guys & Dolls*, *Presto Change-O*. An Argentine native, he immigrated to the U.S. in the late 1990s. He has designed for Broadway and Off Broadway, as well as for Roundabout Theatre, Manhattan Theatre Club, Radio City Rockettes, NYC Center Encores!, Atlantic Theatre Company, NYC Opera, Primary Stages, The Irish Rep, MCC and Ensemble Studio Theatre, among other New York companies. He has also extensively designed for regional theatres across the U.S., commercial projects, operas, ballets and for the Ringling Bros. and Barnum & Bailey Circus. He is an Olivier and Drama Desk nominee and the recipient of the 2010 TDF Irene Sharaff Young Master Award.

PHILIP S. ROSENBERG (Lighting Designer) BSC: *Tribes*, *Much Ado About Nothing*, *See How They Run*, *Sweeney Todd*. Broadway: *Mrs. Doubtfire*, *Pretty Woman*, *The Elephant Man*, *A Gentleman's Guide to Love and Murder* and *It's Only a Play*. Regional: Kennedy Center, La Jolla Playhouse, Ford's Theatre, The Guthrie Theater, The Old Globe, TheatreWorks, Hartford Stage, Alliance, Huntington Theatre Company, Chicago

Shakespeare Theatre, Shakespeare Theatre Company, Dallas Theatre Center, Denver Center Theatre, The Alley Theatre, Arena Stage, The McCarter Theatre, Manhattan School of Music, Portland Stage Company, TACT, Williamstown Theatre Festival, Dorset Theatre Festival, Bay Street Theatre, Goodspeed Opera, Two River Theatre Company, George Street Playhouse and Westport Country Playhouse.

EDDY MINEISHI (Sound Designer) BSC: *The Hills Are Alive with Rodgers & Hammerstein* (Sound Designer), Audio Department Supervisor—2020 season, A1—2019 season. Regional: Assistant Sound Designer for *Buddy: The Buddy Holly Story* at Cincinnati Playhouse in the Park, Sound Designer for ...*Cuckoo's Nest* at Flint Repertory Theatre. Education: Associate Sound Designer for *The Secret Garden*, Associate Sound Designer for *42nd Street*, Sound Designer for *Yeast Nation*, Sound Designer for *Love & Information*, Associate Sound Designer for *Guys and Dolls*, Sound Designer for *Candide*, Sound Designer/A1 for *Into the Woods*. MFA Sound Design & Technology, CCM—University of Cincinnati.

MARY SCHILLING-MARTIN (Wig Designer) BSC: *Fall Springs, Time Flies and Other Comedies, The Royal Family of Broadway*. She is the former Wig Master for La Jolla Playhouse, Marriott Theater in Lincolnshire, Cleveland Play House and Arizona Theatre Company. Her regional credits include: Berkshire Theatre Group, Northern Stage, Great Lakes Theater, Idaho Shakespeare Festival, Lake Tahoe Shakespeare Festival, The Goodman Theatre, Denver Center Theatre Company, San Diego Repertory Theatre, Arizona Theatre Company. Mary along with her daughter, Caitie, is co-owner of Wigs and Whiskers.

RENÉE LUTZ (Production Stage Manager) Associate Artist. Over 55 productions for BSC including *Fall Springs, Into the Woods, West Side Story, The Royal Family of Broadway, Gaslight, Company, Ragtime, American Son, Tribes, Sweeney Todd, Man of La Mancha, Cabaret, Follies*, etc. Recent credits: *GNIT* (directed by Oliver Butler), *Skin of Our Teeth* (directed by Arin Arbus) and *Pericles* (directed by Trevor Nunn; Theatre for a New Audience). Other credits include: *Merchant of Venice* (directed by Darko Tresnjak – national tour and the Royal Shakespeare Company), *Hamlet* (directed by Darko; Hartford Stage), ART, New York Public Theater, Playwrights Horizons, Manhattan Theatre Club, Signature, Classic Stage, Vienna Festwochen, BTF, Yale Rep., Coconut Grove, etc. Her very best credit and longest run is her husband, actor Gordon Stanley.

MCCORKLE CASTING LTD; PAT MCCORKLE, NATHAN FRANCIS, REBECCA WEISS (Casting) (C.S.A.) Associate Artist. Casting actors for Barrington Stage for 19 years. Broadway: Over 50 productions including *On the Town, Amazing Grace, End of the Rainbow, The Lieutenant of Inishmore, Cat on a Hot Tin Roof, One Flew Over the Cuckoo's Nest, Amadeus, She Loves Me, A Few Good Men*. Off Broadway: highlights – *Clever Little Lies; Sheer Madness; Tribes; Our Town* (Barrow Street); *Freud's Last Session; Toxic Avenger; Almost, Maine; Driving Miss Daisy*. Feature film: *Premium Rush, Ghost Town, The Thomas Crown Affair, Die Hard with a Vengeance, School Ties*, etc. Television: *Twisted, St. George, Sesame Street, Hack, Californication, Max Bickford, Chappelle's Show, Strangers with Candy, Barbershop*, etc. mccorklecasting.com

CHARLIE SIEDENBURG (Berkshire Press Representative) (16th Season) Associate Artist. Charlie joined the BSC family in 2005 and has represented over 130 BSC productions. His work has led to features in *The New York Times*, *The Wall Street Journal*, *The Boston Globe*, *USA Today* and *American Theatre Magazine*. His many PR credits include the Metropolitan Opera (Live in HD), Paper Mill Playhouse (1999–2004), George Street Playhouse, Hartford Stage, Goodspeed Musicals, Long Wharf Theatre, Surflight Theatre and Two River Theater Company. He serves as Press Rep for Wagner College Theatre, The Minty Awards, Ghostlight Productions and In The Wings Productions. Charlie is a 1995 Theatre/Arts Administration graduate of Wagner College on Staten Island, where he currently teaches Theatre Appreciation. Last year he was appointed Director of Alumni Relations for his alma mater, Moore Catholic High School.

THE PRESS ROOM (National Press Representatives) Broadway: *Hamilton*, *The Book of Mormon* and upcoming productions of *The Brothers Size*, *Chasing Rainbows*, *Born for This*, *Paradise Square* and *Working Girl: The Musical*. Recent Broadway credits: *The Waverly Gallery*, *Three Tall Women*, *Farinelli and the King*. Off Broadway: *Gloria: A Life*, *Beyond Babel*. Other clients include: Vineyard Theatre, The Wooster Group, Shakespeare's Globe, Theatre Row, Rosie's Theater Kids, Hunter Theater Project, NY Classical Theatre, Southern California's 3-D Theatricals, the award-winning web series "Indoor Boys," actor/pianist Hershey Felder, Why Not Theatre's *Mahabharata* for the Shaw Festival, and Miami New Drama's world premiere musical, *A Wonderful World*.

MISSION

Barrington Stage Company (BSC) is a not-for-profit professional theatre company in the Berkshires (MA) with a three-fold mission: to produce top-notch, compelling work; to develop new plays and musicals; and to engage our community with vibrant, inclusive educational outreach programs.

ABOUT

Barrington Stage Company is the fastest-growing arts venue in Berkshire County, attracting more than 60,000 patrons each year. Co-founded by Artistic Director Julianne Boyd in 1995, BSC continues to gain national recognition for its superior-quality productions and comprehensive educational programming. In its first 11 years, BSC operated from rented space at the Consolati Performing Arts Center at Mount Everett High School in Sheffield, MA.

In July 2005, BSC purchased a 1912 vaudeville theatre in downtown Pittsfield, MA and in June 2006, BSC opened its doors to the Boyd-Quinson Stage, a renovated 520-seat, state-of-the-art theatre. In the spring of 2012, BSC purchased the former VFW building in Pittsfield, three blocks from the Boyd-Quinson Stage. The building, now called the Sydelle and Lee Blatt Performing Arts Center, houses the 136-seat St. Germain Stage and Mr. Finn's Cabaret, a 99-seat cabaret space in the lower level of the building. In 2016, BSC purchased a three-story administrative building on North Street, known as the Wolfson Center, in the heart of downtown Pittsfield. For the first time in the company's history, all BSC offices, rehearsal spaces and classrooms are under one roof, including the costume shop and storage. In 2019, BSC purchased a 22,000 sq. foot building at

34 Laurel Street that has become its Production Center, housing the set, prop and paint shops. The Production Center is also the site of BSC's outdoor tent productions in 2021. Together with other cultural institutions, BSC has become an integral part of downtown Pittsfield's economic revitalization. In 2009, the Massachusetts Cultural Council presented a "Creative Community" Commonwealth Award to the City of Pittsfield in recognition of its efforts to boost the creative economy in Massachusetts.

PRODUCTION HISTORY

BSC's reputation for excellence began with a smash revival of *Cabaret* that moved to Boston in 1997 for an extended run. The theatre's prominence grew with the world premiere of *The 25th Annual Putnam County Spelling Bee* by William Finn and Rachel Sheinkin (BSC 2004; Broadway 2005-2008, winner of two Tony Awards). Other notable productions include Mark St. Germain's *Freud's Last Session* (BSC 2009; Off Broadway 2010-2012); Leonard Bernstein, Comden & Green's *On the Town* (BSC 2013; Broadway 2014, four Tony Award nominations); the world premiere of Christopher Demos-Brown's *American Son* (BSC 2016; Broadway 2018); Stephen Sondheim and George Furth's *Company*, starring Aaron Tveit (BSC 2017); and *West Side Story* in honor of Leonard Bernstein and Jerome Robbins' centenaries (BSC 2018).

Following the industry-wide shutdown due to the coronavirus pandemic, BSC was the first Equity theatre in the US to return to live performance with its critically acclaimed production of *Harry Clarke*, starring BSC Associate Artist Mark H. Dold and directed by Ms. Boyd. The season also included the acclaimed concerts, *The Hills Are Alive with Rodgers & Hammerstein*, *Leslie Kritzer: Is It Over Yet?* and BSC's fully staged, streamed show *Holiday Getaway* as well as several streamed readings, including Rob Ulin's new play *Judgment Day*, starring Jason Alexander and Patti LuPone. In 2021 the company's streaming productions included the critically acclaimed 10th anniversary 10x10 New Play Festival, and readings of the commissioned work *Mother's Day* by Bekah Brunstetter and the Barrington Stage Company's Youth Theatre's production of *The Laramie Project*.

COMMITMENT TO NEW WORK

BSC develops and commissions new work with two programs: PlayWorks, which supports the creation of new plays, and the Musical Theatre Lab, which develops new musicals.

At Barrington Stage Company, we believe that new work is the heart and soul of theatre. If theatre is to thrive and create meaningful and new experiences for audiences, then it is vital to support working playwrights and their visions of the world we live in. Since its inception in 1995, BSC has produced 36 new works, 19 of which have moved on to New York and major regional theatres around the country.

In 2019, the Board of Directors created the Julianne Boyd New Works Fund to support artistic innovation and sustainability. Named for BSC's Co-founder and Artistic Director, who has a long-held commitment of bringing fresh and dynamic voices to the stage, the Fund supports the ongoing development and production of original plays and musicals. This Fund is made possible in part by the generous support of the Sydelle Blatt New Works Commission Program and the Bonnie and Terry Burman New Play Award. Their vision and philanthropy allow BSC to develop and produce work that challenges us, that

asks questions and that can spark joy and passion in our hearts. BSC seeks artists whose unique voices speak to our audiences with relevant and dynamic new work that questions the world we live in – questions that may not have answers, but will begin a dialogue between the artists and our audiences.

COMMITMENT TO EDUCATION

The BSC Education mission is to awaken the minds, imaginations and creative power of children, teenagers and young adults by providing opportunities for them to experience the joy of live theatre as performers, writers, technicians and audience members.

BSC EDUCATION PROGRAMS

PLAYWRIGHT MENTORING PROJECT is an intensive, six-month, out-of-school activity that uses theatre as a catalyst to help youth ages 13–19 learn valuable life skills that can aid them in developing a positive self-image. Over the course of the program, teens are enabled to create an original performance piece based on their own stories in a safe and confidential environment where they can express themselves, develop conflict/resolution skills and create a supportive community. Winner of the *Coming Up Taller Award* from the President’s Committee on the Arts and Humanities.

MUSICAL THEATRE CONSERVATORY is an intensive pre-professional training program in Acting, Directing and Choreography where students work and train with top-level New York directors, choreographers and musical theatre writers during BSC’s summer season.

PROFESSIONAL INTERNSHIP PROGRAM is a professional training program where paid internships are offered to college students and recent graduates interested in pursuing careers in theatre. Interns work with award-winning theatre professionals while spending a summer in the thriving theatre culture of the Berkshires.

YOUTH THEATRE extends the professionalism of our stages to local youth, whereby students mount a full-scale musical theatre production. The 2022 production will be the world premiere of *The Supadupa Kid* – Book by Melvin Tunstall III, Music by Joel Waggoner, Lyrics by Sukari Jones, Based on the novel by Ty Allan Jackson, Directed by Signe Harriday – presented in the Pittsfield Common, free to the public.

STUDENT MATINEE/SCHOOL RESIDENCY PROGRAM During Fall productions, students are brought to special all-student matinees and invited to stay for a talkback with members of the creative team. The school administration and faculty are provided with a study guide that prepares students for the production which provides a springboard for teachers to build lesson plans tying their curriculum to the show.

KIDSACT!, TEENSACT! & KIDSACT! JR. are spring and summer day camps where students learn all aspects of theatre and what it takes to create quality productions. Winner of the 2019 Macaroni Kid Berkshire Family Favorite Theater Class.

GUIDING PRINCIPLES

We acknowledge that we are gathering on the ancestral homelands of the Mohican people. Despite tremendous hardship in being forced from here, today their community resides in Wisconsin and is known as the Stockbridge-Munsee Community. We pay honor and respect to them and their ancestors as we commit to building a more inclusive and equitable space for all.

Barrington Stage Company recognizes that we are a predominantly white institution that has historically benefited from systemic racism. We commit to anti-racism and anti-oppression throughout our organization. Black lives matter. We accept the responsibility to fight to end racial inequities in our theatre and our industry.

Barrington Stage Company is committed to a workplace free of discrimination on the basis of race, color, ethnicity, gender, sexual orientation, national origin, religion, age or disability. Our work seeks to celebrate all members of our community and amplify the marginalized voices who are often silenced. It is our responsibility to prioritize and protect from discrimination and oppression those who make our work possible. We stand in solidarity against bigotry and racism. We will hold our artists, staff, board, audience members, volunteers and donors accountable to these principles.

GET TO KNOW **BARRINGTON STAGE COMPANY**

ARTISTIC

Artistic Director **Julianne Boyd**

Artistic Producer/Director of New Works **Branden Huldeen**

Executive Assistant to the Artistic Director/Artistic Fellow **Hannah Katz**

Archivist **Allyson Sekerke**

Casting Director **Pat McCorkle, CSA, McCorkle Casting Ltd. | Nathan Francis, Rebecca Weiss**

ADMINISTRATION

General Manager **Maggie LaMee**

Assistant General Manager **Erin Tate**

Assistant to the General Manager **Sarah Greenberg**

Administrative Swing **Arella Flur**

Director of Accounting **Martha Read**

Office Manager/IT Administrator **Seth Peto**

Company Manager **Natasha Collier**

Associate Company Managers **Victoria Carroll | Charlotte Cugnini**

Volunteer Relations Manager **C. Jade Nicholas**

Tent House Manager **Miquela Cruz**

Boyd-Quinson Stage House Manager **Crystal Soncini**

Associate House Manager **Travis Kendrick**

House Management Intern **Ajara Jagne**

DEVELOPMENT

Director of Development **Jessica Provenz**

Development Associate **Evan Kudish**

Director of Institutional Giving **Martin Mansfield**

Development Swing **Taylor Tranfaglia**

Development/Special Events Intern **Sally Root**

MARKETING & COMMUNICATIONS

Director of Marketing & Communications **Jonathan Héid**

Marketing & Social Media Manager **Paige Stefanski**

Content Marketing Associate **Christopher Castanho**

Seasonal Marketing Associate **Jillian C. Lucero**

Box Office Manager & Group Sales Manager **Jessica Bush**
Assistant Box Office Manager **Randall Simmons**
Box Office Associates **Allyson Broyles | Alexa Dembiec | Derresha Webb**
Box Office Intern **Shalaine Thomas**
Berkshire Press Director **Charlie Siedenburg**
National Press Representative **The Press Room: Jim Byk, Kelly Guidon**
Digital Advertising **Capacity Interactive**

EDUCATION

Director of Education/Director of Playwright Mentoring Project **Jane O'Leary**
Education Coordinator **Allison Lerman-Gluck**
Community Engagement & EDI Coordinator **Sharron Frazier-McClain**
KidsAct! & TeensAct! Lead Teacher **Sam LaFrage**
KidsAct! & TeensAct! Musical Director **Gaylan Palmer**
KidsAct! & TeensAct! Assistant **Chynna Williams**
Community Engagement Intern **Jessyca Muniz**

PRODUCTION

Director of Production and Operations **Joseph Martin**
Associate Production Manager/Lighting & Sound Technician **Ian Gillis**
Assistant Production Manager **Anaís Bustos**
Technical Director **Tom Minucci**
Assistant Technical Director **Benjamin Reading**
Shop Foreperson/Master Carpenter **Katelyn Seymour**
Scenic Carpenters **Cai Cook | Sarabeth Sabella**
Theatre Technician **Maggie Harrigan**
Boyd-Quinson Stage Deck Chief **Deanna Kahn**
Charge Scenic Artist **Amanda Nerby**
Scenic Artist **Sapphira Koerner**
Lighting Supervisor **Wylder Cooper**
Tent Master Electrician/Board Operator **Kaia Merrell**
Boyd-Quinson Stage Master Electrician/Board Operator **Liz Schweitzer**
Assistant Master Electrician **Anthony Simon**
Electrician **Francisco Hermosillo III**
Properties Manager **Laura O'Brien**
Associate Properties Manager **Derek Alley**
Properties Artisan **Anna Bowdish**
Audio Supervisor **Jason O'Neal**
Tent Audio Engineer **Marion Ayers**
Boyd-Quinson Stage Audio Engineer **Travis Byrne**
Costume Shop Manager **Isabel Martin**
Assistant Costume Shop Manager **Bee Gable**
Drapers **Cecilia Gutierrez | Trent Pcenicni**
Junior Draper/First Hand **Brenda Birkeland**
Stitcher **Caroline Tyson**
Tent Wardrobe Supervisor **Marcy L. B. Fitzpatrick**
Boyd-Quinson Stage Wardrobe Supervisor **Caitie Martin**
Sound Intern **Julia McIntyre**
Wardrobe Intern **Natalie Churchill**

STAGE MANAGEMENT

Production Stage Managers Geoff Boronda | David D'Agostino

Amber Johnson | Renée Lutz | Victoria Navarro

Stage Management Interns Sophie Antovel | Jody Bogner | Emma Nafz

PLAYWRIGHTS

Brent Askari | Daniella De Jesús | Joseph Dougherty

Jessica Provenz | Mark St. Germain | Alec Wilkinson

MUSICAL THEATRE WRITERS

Calpulli Mexican Dance Company | Buddy DeSylva | George Gershwin | Ira Gershwin

DuBose Heyward | Rick Hip-Flores | Gus Kahn | Alberto Lopez

Ballard MacDonald | Zoe Sarnak | Mark St. Germain

DIRECTORS

Joshua Bergasse | Julianne Boyd | Reginald L. Douglas | Richard Hamburger

Ron Lagomarsino | Brisa Ariela Muñoz | Taylor Reynolds | Henry Stram

CHOREOGRAPHERS

Joshua Bergasse | Jeffrey L. Page

MUSICAL DIRECTORS

Darren R. Cohen

SCENIC DESIGNERS

Beowulf Boritt | Lex Liang | Mikiko Suzuki MacAdams | Brian Prather

COSTUME DESIGNERS

Jen Caprio | Linda Cho | Toni-Leslie James | Mary Schilling-Martin | Sara Jean Tosetti | Alejo Vietti

LIGHTING DESIGNERS

Peter Kaczorowski | David Lander | Philip S. Rosenberg | Stephen Strawbridge

SOUND DESIGNERS

Brendan Aanes | David Budries | Josh Millican | Eddy Mineishi | Alexander Sovronsky

BOARD OF DIRECTORS

Mary Ann Quinson, *Board Chair*

Chris Dodig, *Vice President*

Marita O'Dea Glodt, *President*

Bonnie Burman, *Secretary*

Julianne Boyd, *Artistic Director*

Robert Youdelman, *Treasurer*

Carole Burack Sherwood Guernsey

Debra Jo Rupp

Roz Stuzin

Warren Dews, Jr.

Caroline Holland

David B. Schulman

Jodi Tartell

Reba Evenchik

Arnold Kotlen

Laurie Schwartz

David Tierney

Ralph Friedner

Rhoda Levitt

Richard Seltzer

Eleanore Velez

Alan H. Green

Sheila Richman

Mark St. Germain

Michael Zaccaro

EMERITI

Sydelle Blatt

James A. Lapenn

Rosita Sarnoff

Kathleen Chrisman

Heather Nolin

Richard Solar

Marilyn "Mike" S. Faust

Roberta Olsen

Reid White

Jeananne Hauswald Harris

Robert Petricca

Eileen Young

Marcie Imberman

Robert K. Rosenthal, M.D.*

James M. Lamme III*

Jude Sabot

*Deceased

THE NEXT ACT

A CAMPAIGN FOR BARRINGTON STAGE

\$100,000+

Barr Foundation
Bonnie and Terry Burman
Sydelle and Lee Blatt
Elizabeth and Phill Gross
in honor of Mary Anne Gross
The Klarman Family Foundation
Heather Nolin and Herbert A. Allen
Mary Ann and Bruno A. Quinson

\$50,000+

The Feigenbaum Foundation
Mill Town Capital
The Shubert Foundation
Jodi and Paul Tartell
The Zelda and John Family Foundation

\$20,000+

Avangrid Foundation
Berkshire Bank Foundation
Drs. Judith and Martin Bloomfield
Roxanne and Scott Bok
Julianne and Norman Boyd
Carole and Dan Burack
C.F. Adams Charitable Trust
Michelle and Chris Dodig
Audrey and Ralph Friedner
Marita and David Glodt
The Green Foundation
Greylock Federal Credit Union
Sherwood Guernsey
Joan and Jim Hunter
InterAct for Change/Beth and Peter Levin
Leslie and Stephen Jerome
Laurents/Hatcher Foundation
Leon Lowenstein Foundation
Rhoda and Morris Levitt
Massachusetts Cultural Council
Debra Jo Rupp
Carrie and David Schulman

Laurie and Martin V. Schwartz
Marvin Seline
Carol and Richard Seltzer
Cheryl and Michael Zaccaro

\$10,000+

AJ Schnopp Jr Construction Inc
Alpern Family Foundation
Jody and John Arnhold
Stephanie Beling
Berkshire United Way
Hildi and Walter Black
Kathleen and Neil Chrisman
Jeff Davis and Michael Miller
Michele and Jim Dodge
Hermine Drezner
Violet and Chris Eagan
Nancy and Steven Finna
Deborah and King Francis
Anne and Lawrence Frisman
Ann and John Galt
Judith Goldsmith
J. Ryan Gunsalus
Madeline and Ian Hooper
Judythe Anne and Martin Isserlis
Athena and Richard Kimball
Martha Locke
Susan and David Lombard
Mass Humanities
Robin and Buzz McGraw
Cynthia and Randolph Nelson
Linda and Robert Noonan
Mary and Philip Oppenheimer
Nancy and Donald Osborne
Marian and Marshall Raser
Bette Sue and Lawrence Rosenthal
James M. Ruberto
Rosalyn and Charles Stuzin
Diane Troderman and Harold Grinspoon
Karen and Robert Youdelman

THANK YOU TO OUR GENEROUS DONORS!

We thank the generous donors who have supported BSC's Next Act, a campaign that allowed BSC to survive in 2020 so that we could thrive in 2021. We also express our gratitude to the lead donors who have made gifts towards our programming between July 1, 2020 and April 25, 2021.

PRODUCING PARTNER (\$50,000+)

Barr Foundation
Sydelle and Lee Blatt
Carole and Daniel Burack
Bonnie and Terry Burman
The Feigenbaum Foundation
Elizabeth and Phill Gross
in honor of Mary Anne Gross
Klarman Family Foundation
Rhoda and Morris Levitt
Massachusetts Cultural Council
Mill Town Capital
Heather Nolin and
Herbert A. Allen
Mary Ann and Bruno A. Quinson
The Shubert Foundation
Jodi and Paul Tartell
The Zelda and John Schwebel
Family Foundation

ANGEL (\$10,000-24,999)

AJ Schnopp Jr.,
Construction Company
Alpern Family Foundation
Arnhold Foundation
The Avangrid Foundation
Barrow Foundation
Dr. Stephanie Beling
Berkshire Taconic
Community Foundation
Berkshire United Way
Hildi and Walter Black
C.F. Adams Charitable Trust
Kathleen and Neil Chrisman
Michelle and Chris Dodig
Violet and Chris Eagan
Reba and Bruce Evenchik
Renee and Steven Finn
Deb and King Francis
Anne and Larry Frisman
Dr. Thomas M. Fynan and
Mr. William F. Loutrel
Ann and John Galt
Greylock Federal Credit Union
Dr. J. Ryan Gunsalus

Madeline and Ian Hooper
Jim and Joan Hunter
Judy and Marty Isserlis
Athena and Richard Kimball
Laurents/Hatcher Foundation
InterAct for Change /
Beth and Peter Levin
Martha Locke
in honor of David Prendergast
The Donald McGraw Foundation
/ Elizabeth and Robin McGraw
Nelson Charitable Foundation
Linda and Robert Noonan
Mary and Philip Oppenheimer
Nancy and Donald Osborne
Marian and Marshall Raser
Sheila and Harold Richman
Bette Sue and
Lawrence Rosenthal
James M. Ruberto
Debra Jo Rupp
Carla and Ed Slomin
Diane Troderman and
Harold Grinspoon
Karen and Bob Youdelman
Cheryl and Michael Zaccaro

ARTISTIC CIRCLE (\$25,000-49,999)

Berkshire Bank
Roxanne and Scott Bok
Julianne and Norman Boyd
Jeff Davis and Michael Miller
Audrey and Ralph Friedner
Marita and David Glodt
The Green Foundation
Sherwood Guernsey
Leslie and Stephen Jerome
Arnold Kotlen and
Stephanie Fleckner
Liz and George Krupp
Rosita Sarnoff and Beth Sapery
Carrie and David Schulman
Laurie and Martin V. Schwartz
Carol and Richard Seltzer
Roz and Charles Stuzin

PRODUCER (\$7,500-9,999)

Judith and Richard Jacobs
The Lese Family
Carol and Alfred Maynard

DIRECTOR (\$5,000-7,499)

Berkshire Roots
The Gregory Bulger Foundation /
Gregory Bulger and Richard Dix
Carr Hardware
Charles H. Hall Foundation
The Dobbins Foundation
Dwight Richard Odle Foundation
The Fairbanks Family
Charitable Foundation
Mrs. Jo Ann and
Dr. William Hajjar
The Miami City Ballet
in memory of Morris Levitt
Pittsfield Cultural Council
Emily Rechnitz
Stephanie and Richard Solar
Terry and Dr. Arthur Wasser
Jessie Wolfson
Mr. and Mrs. Carlo E. Zaffanella
Richard M. Ziter, M.D.,
and Eric Reimer

FOUNDER (\$2,500-4,999)

Carolyn and Mark Ain
Gail Asarch and
Dr. James Satovsky
William J. and Margery S. Barrett
Fund for Adams, Cheshire
Bessie Pappas
Charitable Foundation
Betsy and Nathaniel Bohrer
Jadwiga and Donald Brown
The Charles L. Read Foundation
Lynn and Joseph Cooper
Elephant Rock Foundation
Monroe B. England
Olivia Georgia and Steve Oakes
Virginia and James Giddens
Health New England
Susan Henshaw Jones and
Richard Eaton

James and Robert Hardman
Fund for North Adams
Joan and Paul Kopperl
Diane and Darryl Mallah
Ann M. and Don Morrison
Claudia Perles
The Pittsfield Cooperative Bank
Marcia and Albert Schmier
Abby Schroeder
Arlene and Donald Shapiro
Jane and Martin Schwartz
Laurie and David Tierney
Linda and Ed Wacks

STAR (\$1,500-2,499)

Carole and Richard Berkowitz
Glenna and Martin Bloom
Linda Benedict Colvin
Cynthia and Oliver D. Curme
Carol and Herbert Diamond
Ricki Gardner and
William Cavanagh
Lorna and Edwin A. Goodman
Gale and Dustin Griffin
Miriam and Ronald Hinds
Marianne and Richard Jaffe
Elaine and Daniel Katz
Dale and Dr. Steve Kulvin
Joyce and Jim Lapenn
Pamela Lichty
Beth and Adam Man
Barri R. Marks and Woody Exley
Alice McInerney
Nancy McIntire
Mary Ellen and John O'Connor
Judith Robins
Milton Rubin and
Barbara Mandler
Marjorie Safran and
Jeffrey Leppo
Heidi and Robert Schwartz
Kathy and Joel Segall
Enid Michelman and
Arthur Sherman
Katherine and
Thomas Shoemaker
Nancy and Stanley Singer
Annaliese Soros
Roger Tilles
Phyllis Topchik
Judy Ann Wade
Cynthia and Tucker Welch

Susan and Geoffrey Woglom
Ray Ellen and Allan Yarkin
in honor of Roz Stuzin

LEADER (\$1,000-1,499)

Anonymous
The Ansin Foundation
in memory of Morris Levitt
Stephanie Ansin and
Spencer Stewart
in memory of Morris Levitt
Shari and Stephen Ashman
The Barrington Foundation
Barnett and Anne Berch
Foundation
Marjorie and Barry S. Berg
Jane Braus
John Capizzi and Glenn Riddell
in honor of Marita Glodt
Christine and Larry Carsman
Nardyne and Dick Cattani
Kay and Elliot Cattarulla
Marietta Rapetti Cawse and
James N. Cawse
Miriam Cohen
Karen Conlin and
Raymond McGarrigle
Susan and Anthony Cook
Cory and Bob Donnalley
Charitable Foundation
Robert Donnalley and
Joan Weingarten
Janet and John Egelhofer
Beth and Rich Fentin
Florence and Michael Freedman
Barbara and David Garlock
The Frederick H.
Gilmore Fund
Robert and Ann Stephanie
Gittleman Charitable Fund
Renee and Neal Goff
Carol and Joseph Green
Karen and Werner
Gundersheimer
Herbert and Ruby Halperin
and Family
in memory of Morris Levitt
Hickrill Foundation,
Denie and Frank Weil
Barbara J. Hill
Harriet and Leonard Holtz
Patricia Hyde
Adam Irick and Milton Lestz
Carol and George Jacobstein

Howard P. Kagan
Pat Kennelly and
Edward Keon
Deborah and William Kurz
Willa Lewis and
Edward Moulin
Susan and David Lombard
J.H. Maxymillian, Inc.
Nancy McIntire
The Messinger Foundation
Jacqueline and Jaan Metsma
Catherine B. Miller
Adam Mirabella
in honor of David Prendergast
Suzanne F. Nash
Sally Ourieff and
Bruce Zetter
David Paget
David Pierce
in honor of Harriet Harris
Penny and Claudio Pincus
Diane and Arthur Provenz
Elisif and Tim Quinson
Randi Rossignol
Linda and Frank Russell
Vicki and Bruce Safran
Susan and Ron Schain
Raquel and Michael Scheck
Liz Schneider and
Ben Liptzin
Carol and Marvin Schwartzbard
Ms. Joan Schwartzman and
Dr. Norman Atkin
Joel Shapiro
Rita and Harvey Simon
Mark St. Germain
Anne M. and William Tatlock
Sheila Terens
John A. and
Kathi Blatt Thonet
Barbara and Eugene Trainor
The Velmans Foundation
in memory of Loet Velmans
Karen and Harry Waizer
Paula and Stan Walczyk
Ward's Nursery
Harriet and Melvin Warshaw
Audrey Weiner and
Jeffrey Solomon
Laird and Reid White
Linda Zukowski

BSC'S PRODUCTION CENTER

was made possible by the generous support of

Mary Ann and Bruno A. Quinson Carole and Daniel Burack

Massachusetts Cultural Council

Laurie and Martin V. Schwartz Arnold Kotlen and Stephanie Fleckner

Marita and David Glodt Bonnie and Terry Burman
Sherwood Guernsey Richard and Carol Seltzer
Roz and Charles Stuzin Jodi and Paul Tartell

Sydelle and Lee Blatt Rhoda and Morris Levitt Carrie and David Schulman
Julianne and Norman Boyd Joseph Martin Mark St. Germain
Roberta McCulloch-Dews Lyn and Robert Petricca Karen and Robert Youdelman
and Warren C. Dews Sheila and Harold Richman David and Laurie Tierney
Chris and Michelle Dodig Esther and Robert Rosenthal Eleanore Velez
Reba and Bruce Evenchik Debra Miersma and David Russell Cheryl and Michael Zaccaro
Audrey and Ralph Friedner

BSC THANKS LEGACY SOCIETY MEMBERS WHO ARE PROVIDING FOR OUR STRONG FUTURE

Sydelle and Lee Blatt Marita and David Glodt Mary Ann and Bruno A. Quinson
The Boraski Family Children's Fund Sherwood Guernsey Mickey and Norman Resnick
Claudia A. Brown June M. Guertin* Sheila and Hal Richman
Bonnie and Terry Burman Rhoda Herrick* Carrie and David Schulman
Michelle Clarkin Morris Levitt* Karen Watkins
Moe England The Lowenstein Foundation Stephen and Sally Wittenberg
Stuart M. Fischman, Esq. David Prendergast* **Deceased*

BUSINESS PARTNERS

BSC is grateful to our local Business Partners



MILL TOWN



NEXT UP AT THE BOYD-QUINSON STAGE

ATTENTION

Amateurs, Professionals, Criminals—Blue Collar, White Collar.
You Have Wronged People. It is to the People that You Must Apologize,
Not to the State, Not to God. Get Your Misdeeds off Your Chest!

CALL

SISTER SORRY

SISTER SORRY
555-7687

SISTER SORRY
555-7687

SISTER SORRY
555-7687

SISTER SORRY
555-7687

SISTER SORRY
555-7687

SISTER SORRY
555-7687

SISTER SORRY
555-7687

SISTER SORRY
555-7687

SISTER SORRY
555-7687

AUGUST 13-29

By **ALEC WILKINSON**
Directed by **RICHARD HAMBURGER**

In the early 1990s in New York City, a conceptual artist invites the public to confess their crimes anonymously – via an answering machine. A wide variety of messages pour in, confessing a range of misdeeds, from running a traffic light to infidelity. One caller captures her attention with a stunning and unbelievable confession, which quickly unravels into a suspenseful and thrilling adventure. Based on a true story, *Sister Sorry* is inspired by Alec Wilkinson's "The Confession", originally published in *The New Yorker*.

UNDER THE TENT AT THE PRODUCTION CENTER

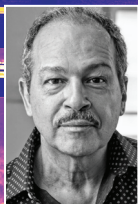
BOCA

By **JESSICA PROVENZ**
Directed by **JULIANNE BOYD**

JULY 30–AUGUST 29



FEATURING



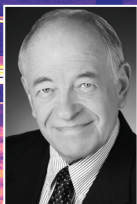
Gilbert Cruz



April Ortiz



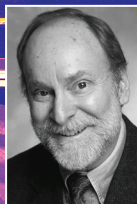
Debra Jo Rupp



Kenneth Tigar



Peggy Pharr Wilson

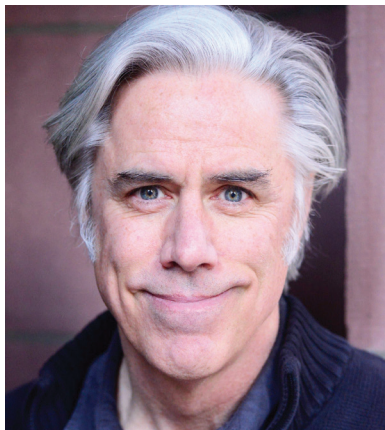


Robert Zukerman

Are you ready for some laughs? Come, soak up the good life in Boca Raton, a city that offers the fountain of youth. The sun always shines, the lawns are always manicured and the weather holds steady at a perfect 75, just like Boca's well-maintained seniors. Travel to the Sunshine State for a night of short comedies that follows a group of retirees who, between rounds of golf, bridge and Botox, can be found bickering, gossiping and living it up like they're teenagers all over again.

2021 CONCERTS

UNDER THE TENT AT THE PRODUCTION CENTER
34 LAUREL STREET, PITTSFIELD



**JEFF
MCCARTHY**
I PROMISE YOU A HAPPY ENDING

SATURDAY, JULY 24, 8PM

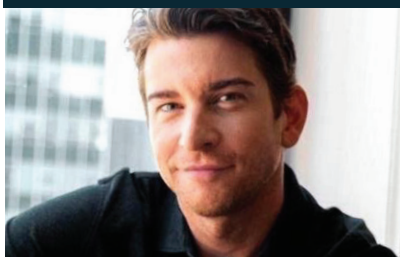
**JOSHUA
HENRY
LIVE**

MONDAY, AUGUST 16, 8PM



MONDAY, AUGUST 23, 8PM

PHOTO CREDIT
STEFAN RADTKE



**ANDY KARL AND ORFEH:
LEGALLY BOUND**

June 18 – July 10
at The Unicorn Theatre

LIMITED

THE IMPORTANCE OF BEING EARNEST

by Oscar Wilde
directed by David Auburn

July 23 – August 15
Outside Under the Big Tent
in The Colonial Theatre Parking Lot

THE WIZARD OF OZ

directed by E. Gray Simons III
music direction by Jacob Kerzner
choreography by Isadora Wolfe

August 13 – September 5
Outside In The Courtyard
at The Unicorn Theatre

NINA SIMONE FOUR WOMEN

by Christina Ham
directed by Gerry McIntyre
music direction by Danté Harrell

Coming Soon...

SHIRLEY VALENTINE
OCT 2021

Twining Berlin's
White Christmas
The Musical

★★★ Colonial Concert Series: Featuring Broadway Favorites ★★★
Outside Under the Big Tent in The Colonial Theatre Parking Lot

July 9

CAROLEE CARMELLO
MY OUTSIDE VOICE

July 10

KRYSTA RODRIGUEZ
IN CONCERT

Aug. 21

STEPHANIE J. BLOCK
RETURNING HOME

Aug. 28

KATE BALDWIN & GRAHAM ROWAT
DRESSED UP AGAIN

Sept. 4

AN EVENING WITH RACHEL BAY JONES

UNICORN · COLONIAL · FITZPATRICK

BERKSHIRE THEATRE GROUP

(413) 997-4444
www.BerkshireTheatreGroup.org
The Colonial Theatre • 111 South Street, Pittsfield, MA
The Main Stage • 83 East Main Street, Stockbridge, MA
The Unicorn Theatre • 6 East Street, Stockbridge, MA

SHAKESPEARE & COMPANY

2021 SUMMER SEASON

KING LEAR

by William Shakespeare
Featuring Christopher Lloyd
JULY 2 – AUGUST 28

BECOMING OTHELLO: A BLACK GIRL'S JOURNEY

by Debra Ann Byrd
JULY 16 – 25

ART

by Yasmina Reza
Translated by Christopher Hampton
JULY 30 – AUGUST 22

A Workshop Production

MEASURE FOR MEASURE

by William Shakespeare
SEPTEMBER 1 – 5

hang

by debbie tucker green
SEPTEMBER 10 - OCTOBER 3

THE CHAIRS

by Eugène Ionesco
OCTOBER 8 – 31

"stage magic"
- TheaterMania

"Exceptional"
- The Wall Street Journal

**"Bold, Brave...
Exhilarating"**
- BroadwayWorld



MaConnia Chesser and Jennie M. Jadow,
The Merry Wives of Windsor, 2021, Photo by Zachary de Silva

SHAKESPEARE.ORG

413.637.3353

LOVE PITTSFIELD

downtown & beyond

EXPERIENCE
PITTSFIELD.
SO MUCH TO LOVE!



Nightlife + Arts • Outdoor Fun • Dining • Unique Shopping
Calendar of Events • Downtown Happenings • Deals + more!

Explore everything to love about Pittsfield:

LOVEPITTSFIELD.COM DOWNTOWNPITTSFIELD.COM

THE HILLS ARE ALIVE AT THE BERKSHIRE JEWISH FILM FESTIVAL

July 5–August 23, 2021

BerkshireJewishFilmFestival.org
info@berkshirejewishfilmfestival.org



Generous support from the Wolfson Family Foundation,
John Bergman Charitable Trust, Greylock Federal Credit Union, Berkshire Bank, MountainOne,
Spitz-Tuchman Charitable Trust and Harold Grinspoon Foundation

“One of America’s best historic homes”

—Architectural Digest



THE MOUNT
EDITH WHARTON'S HOME

Book online at
EdithWharton.org
Lenox, MA • 413-551-5111



The best of the Berkshires on
24 beautiful acres *featuring*

Taking Flight

a season of flight-themed exhibits,
events and family activities.



5 West Stockbridge Road, (Routes 102/183), Stockbridge, MA
413.298.3926 www.berkshirebotanical.org

The escape you've been waiting for!

ENCHANTED: A HISTORY OF FANTASY ILLUSTRATION

Premiering June 12

LAND OF ENCHANTMENT: FANTASTICAL SCULPTURES

Opening July 10

Across the magical Museum grounds.



James Gurney, Garden of Hope, 1995 ©James Gurney

NORMAN ROCKWELL MUSEUM

NRM.org • Stockbridge, MA • 413.298.4100 • KIDS & TEENS FREE!

BERKSHIRE MUSIC SCHOOL

Celebrating 80 Years of Spreading the Joy of Music
throughout The Berkshires!

**All Instruments – All Ages – All Levels
In-person & Online Lessons Available**



30 Wendell Avenue, Pittsfield, MA. 01201
www.BerkshireMusicSchool.org
413-442-1411



PITTSFIELD FARMERS MARKET

Saturdays, 9am - 1pm on The Common
farmersmarketpittsfield.org

The first teen-run market in the region and the first year-round market in Berkshire County.



YOUTH CREWS

Spring, Summer and Fall Farm Crews
Graduate-level Market Crew

We hire Pittsfield teens to work in Crews on farms, in food pantries and at our own farmers market.

Empowering youth and building community through food and farming.

rootsrising.org

CHESTER THEATRE COMPANY

TITLE AND DEED

by Will End
June 16-27



by Eleanor Burgess
July 14-25

TINY BEAUTIFUL THINGS

by Nia Vardalos
August 18-29



CHESTER@HANCOCK

All performances will be on the beautiful grounds of Hancock Shaker Village in Pittsfield, MA

chestertheatre.org

SEASON 85 at *Weston* A return to live performance



WESTON PLAYHOUSE
THEATRE COMPANY
Weston, VT • westonplayhouse.org

Mac-Haydn Theatre

2021 Season

WWW.MACHAYDNTHATRE.ORG
(518) 392-9292

JUL 29-AUG 8

PIPPIN

AUG 12-22

STARBUCKS LOVES ME

AUG 26-SEP 5

MAN OF LA MANCHA

SEP 10-OCT 3

the WORLD GOES ROUND

SEP 11-OCT 2

BEEHIVE

DEBUT CHILDREN'S SHOW!
AUG 20 & 21, 27 & 28

The Most Incredible Thing

The summer continues into September with unique concerts and performances, visit our website for details.

AUG 18, SEP 10 & 17

Still Within the Sound of My Voice:
The Songs of Linda Ronstadt
Elizabeth Ward Land

SEP 4, 15, 22 & 29

Showstoppers
Mac-Haydn Company

SEP 1 & 29

Exiled:
The Evolution of Kurt Weill
James Benjamin Rodgers

SEP 15 & 22

Laura's at the Helm
Laura Helm

SEP 24 & OCT 1

toUch Performance Art



the *Bidwell House*
museum

EARLY BERKSHIRE HISTORY
▶ bidwellhousemuseum.org



the **Marketplace**

Whether it be a great bite before the show or a catering platter for the office, we've got you covered.

- Breakfast
- Lunch
- Supper
- Gluten-free and Vegan options!

Pittsfield Cafe Sheffield Cafe
53 North St 18 Elm Ct
GB Kitchen Table
240 Stockbridge Rd



HOT HARRY'S
= FRESH BURRITOS =

37 North Street · Pittsfield, MA 01201
413-448-6155
Fax: 413-443-7050

visit us online at
www.hotharrysburrITOS.com




LOCAL PRODUCTS & INGREDIENTS
FRESH ORGANIC JUICE
& SMOOTHIE BAR
FARM FRESH SALADS
SANDWICHES · WRAPS · PANINIS
LOCAL COFFEE & ESPRESSO DRINKS
"GRAB & GO'S" · CATERING

www.wrapcafes.com · 413-499-3414



Patrick's Pub
pittsfield, ma

Fresh Food at a Great Price!

Open Lunch & Dinner **Reservations Accepted**

Homemade Soups · Salads · Wraps · Burgers
Entrees · Weekly Specials

16 Beers on Draft Great Drink Specials Gluten Free Options

On Park Square ♦ (413) 499-1994 ♦ patrickspubpittsfield.com



Chocolate Springs™
CAFÉ

SERIOUS HOT
OR ICED CHOCOLATE
GOURMET GELATO
AND TREATS
HAND CRAFTED
IN THE BERKSHIRES
OPEN 7 DAYS A WEEK

Escape into Chocolate™

55 PITTSFIELD/LENOX ROAD
ROUTE 7, LENOX MA
413-637-9820
CHOCOLATESPRINGS.COM

The winner for best
homemade frozen
yogurt goes to



and the winner for
best handcrafted
pizza goes to.....



Find us at 505 East Street Pittsfield MA

@ayelada

@crustpz

(413) 344-4126

(413) 464-7977



PAUL RICH & SONS

FURNITURE | MATTRESSES | DESIGN

DOWNTOWN PITTSFIELD | DELIVERY ANYWHERE | PAULRICH.COM



Planet
Yoshi Yoshi
Elliot Lauren
Banana Blue
Elemente Clemente
Henry Christ
Indies
Issey Miyake
Pete
Project J
Art Point
Mac Jeans
Alembika
Angela Caputi
Lamberto Losani
BAOBAO
Matti Mamane
Beate Heymann
Krazy Larry
Robert Graham

CASABLANCA

Lenox, MA
Clothing and Accessories
for Women and Men
50 Church St.
413.637.2680


Alison Sheri • Jillinova • Michael Tyler Part
Two • True Blue • Trisha Tyler
Katherine Barclay • Socksmith • Dolcezza

**THE BEST
KEPT SECRET
IN LENOX**

**S
W
T
R
Z**

SWEATERS!

**COOL TOPS FOR *MOSTLY* UNDER
100 BUCKS**

38 CHURCH ST., LENOX, MA

OST
GREYLIN
PORTO
LIVERPOOL
NALLY & MILLIE

GB9

DAME
ERIC MICHAEL
BOS & CO
KORK EASE

**CONTEMPORARY FASHION
AND FOOTWEAR IN THE
HEART OF GREAT BARRINGTON**

9 RAILROAD STREET
GREAT BARRINGTON 

SHOOZ

Beautifeel Flex
Summit Sacha London
Fly London Ara
Arche Jambu
Cougar Miz Mooz
Sorel Brenda Zaro
Wolky UBU
Earth M. Rena
Vaneli
Sofft
Bussola
Naot

44 Housatonic Street Lenox, MA
413-637-1118 *Open seven days*
"I get a kick out of shooz!" 



annie selke
 PINE CONE HILL | DASH & ALBERT
 annieselke.com

ANNIE SELKE SHOP
 36 MAIN ST, LENOX, MA

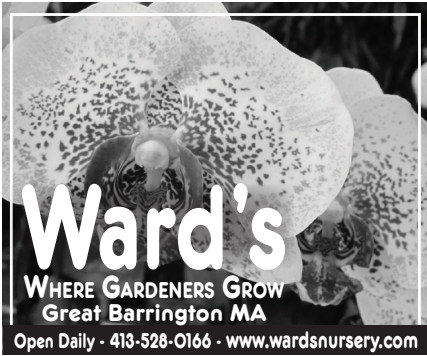
THE OUTLET @ PINE CONE HILL
 125 PECKS RD, PITTSFIELD, MA



GUIDO'S FRESH
 MARKETPLACE
 foraging for you

#artfeedsus

LOCATED ALONG RTE 7 PITTSFIELD & GB
 @GUIDOSFRESHMARKETPLACE



Ward's

WHERE GARDENERS GROW
 Great Barrington MA

Open Daily - 413-528-0166 - www.wardsnursery.com

Get hooked on
 retirement income planning, today.



Balanced Approach...Rock Solid Advice

Dave Milligan ■ Jon Meczywor

www.balance-rock.com

378 South St., Pittsfield 413.442.8190

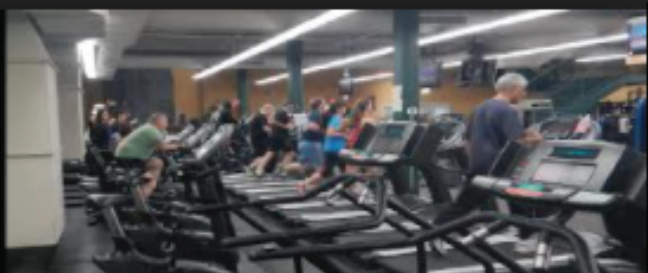
Securities and advisory services offered through LPL, a registered investment advisor, member FINRA/SIPC

Guardian

**Engage us. Excite us.
 Entertain us. Challenge us.**

The Guardian Life Insurance Company of America | guardianlife.com

Guardian® is a registered trademark of The Guardian Life Insurance Company of America,
 New York, NY 2021-117242 (03/23) | New York, NY



As a full service health club, the Berkshire Nautilus features:

Two full floors of exercise equipment

Over 50 cardiovascular machines

Three different lines of strength training equipment,
including Nautilus, Magnum, and Arcuate machines.

Complete Synergy Functional Fitness Circuit

Weekly classes including Serious Cycle, Yoga, Pilates
HIIT, Body sculpting and more.

Over 50 pieces of cardiovascular equipment highlighting
both upper and lower body exercise and rehabilitation

Largest free weight floor in the Berkshires.

Spacious locker rooms with
separate steam, sauna, and hot tubs

Certified staff of personal trainers

Berkshire Nautilus

Building Healthier Lives Through Exercise

42 Summer Street, Pittsfield, MA, 01201

413-499-1217

~ The Fitness Store ~

Home and Commercial
Fitness Equipment
Sales and Service



Treadmills
Home Gyms
Free Weights
Exercise cycles
Elliptical Trainers
Benches, Racks and More

Take the guesswork out of outfitting your home gym.

Buy from the Experts, Fitness specialists

Inside the **Berkshire Nautilus**

42 Summer St.

Pittsfield Ma. 01201

413 499-1217

The Fitness Store

42 Summer Street

Pittsfield, MA

413-499-1221





BERKSHIRE YOGA DANCE & FITNESS

Find Joy Through Movement



Outdoors & Online

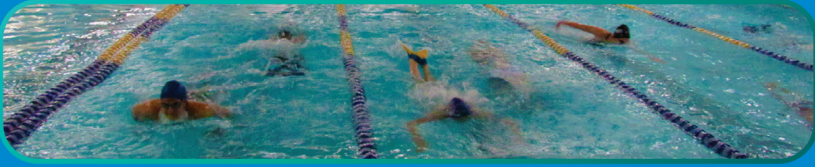
at the most beautiful spots in The Berkshires

- Group Classes for all levels
- Special Workshops and Events
- Private Sessions - outdoors or on location

New Students - 30 Days of Unlimited Joy for just \$59

Voted Best Yoga Studio in The Berkshires

To register visit: www.BerkshireOutdoorYoga.com



When you join Berkshire Family YMCA, you're committing to more than simply becoming healthier. At the Y, children learn what they can achieve, families spend quality time together, and we all build relationships that deepen our sense of belonging ... strengthening our community.

For more than a workout. For a better us.

**WE WELCOME ALL SIZES ALL COLORS
ALL GENDERS ALL BELIEFS ALL RELIGIONS
ALL TYPES ALL PEOPLE EVERYONE**

YOU BELONG HERE

JOIN > GIVE > VOLUNTEER > BFYMCA.ORG



**FOR YOUTH DEVELOPMENT®
FOR HEALTHY LIVING
FOR SOCIAL RESPONSIBILITY**

B E R K S H I R E

Aimee Marshall, Owner NASM, ACE, E-RYT

FITNESS **BFW** WELLNESS



bfwstudio.com
137 NORTH ST.

413-885-1633
PITTSFIELD, MA

State of the art fitness equipment | Pilates Apparatus

Personal Training | Official Spinning Studio

Air conditioned studios with free towels and water

Minutes away at 137 North Street! | Convenient Parking

47 class offered weekly (including Yoga)

Experience provides perspective

What you see differs from how you see. When experience encourages you to recognize details others may miss, you gain a perspective that can make a difference.



Have a conversation with our managing director, Gary Schiff, and his team at October Mountain Financial Advisors.



103 West Park Street
Lee, MA 01238
(413) 243-4331

www.octobermountainfa.com

Member SEC, FINRA, SIPC



Investing in What Can Be

At Berkshire Bank, we're committed to investing in the success and vibrancy of our local communities. By providing financial support, embracing the power of our employees, and creating sustainable business practices, it's our goal to transform possibilities into a brighter reality for the people and places we serve.



Member FDIC. 7/21

— Established 1962 —

A.J. SCHNOPP, JR.

CONSTRUCTION INC.

LICENSED AND INSURED

DESIGN / BUILD

Custom Homes
Residential & Commercial
Construction

*Family Owned and Operated
Serving Berkshire County*

Gregory Schnopp
Andrew Schnopp

(413) 684-2374

Website:
ajschnopp.com

The Show Must Go On

WAMC Proudly
Supports the Arts



WAMC NORTHEAST
PUBLIC RADIO

Always in Reach
On air, online and on the WAMC app

Attentive
engineering - architecture
civil/survey - planning

engineers
architects
planners

www.hillengineers.com
50 Depot St Dalton MA 01226 | 413-684-0925
44 Spring St Adams MA 01220 | 413-741-0013



EVERYTHING INTERIOR

PAINT | FLOORING |
WINDOW TREATMENTS | WALLPAPER

75 Main Street, Great Barrington, MA 01230

413-528-0038 www.ecaligari.com

Welcome Back Barrington Stage Company!

The heart and soul of the Berkshires is theatre, and enjoying these enriching, shared experiences **together**.



zogics



**SECOND NATURE
GARDEN DESIGN**

DESIGN - INSTALL - SUSTAIN
Distinctive Landscapes & Stonework

secondnaturegardens.org
413.441.7836 | Richmond MA

ALARMS

of BERKSHIRE COUNTY

We are known...
by the Company we keep

Clark Art Institute
Tanglewood
The Eric Carle Museum
Berkshire Museum
Barrington Stage
Norman Rockwell Museum
And a host of satisfied Homeowners

alarmsofberkshirecounty.com

24-hour UL Listed Monitoring
Security, Fire, Low Temperature,
Carbon Monoxide, Surveillance
iPhone/Android Compatibility

326 Springside Avenue
413-445-4030 800-370-2525

MA Lic# 1489C
NY Lic # 12000184861

BERKSHIRE PROPERTY AGENTS.COM

BERKSHIRE COUNTY
413 528 6800

COLUMBIA COUNTY
518 325 6800

SMART
SERVICE
AND
TARGETED
MARKETING

To advertise in our program,
please contact

Marketing@BarringtonStageCo.org

To donate or become a business partner,
please contact

Development@BarringtonStageCo.org

HOTEL ON NORTH

THE REVIEWS ARE IN

And once again Hotel on North is *the* place to visit when taking in the Barrington Stage Company's new season. Located just around the corner from the theater's main stages, our nationally acclaimed accommodations offer a blend of urban sophistication and 19th Century elegance unsurpassed in the Berkshires.

297 north street
pittsfield, ma
413 358 4741
hotelonnorth.com

LH
LakeHouse



Luxury Waterfront Boutique Inn



CLOSE TO ALL BERKSHIRE ATTRACTIONS
lakehouseinnlee.com | 413-243-6290

BERKSHIRE MOUNTAIN DISTILLERS PRESENTS

THE CRAFT 

BREWERS

Whiskey PROJECT

BERKSHIRE MOUNTAIN DISTILLERS

CraftBrewersWhiskeyProject.com

BALDERDASH
CELLARS 

wicked wines & tall tales™



BIG ELM
BREWING

BREWED
for
EVERYONE

IPA

Blueberry & Vanilla

STOUT

413

Taproom Open Thurs - Sunday Noon till 7pm
Samplers / Pints and Beer to Go!
65 Silver Street, Sheffield, MA 413.229.2348



Experience the Berkshires' Premier Wine, Spirits, Craft Beer & Cheese Shop

SPIRITED
wine • food • spirits

Jim Nejaime, Wine Merchant
444 Pittsfield Road
Lenox, MA 01240
413.448.2274

Visit **SPIRITED-WINES.COM**
for convenient ordering
Curbside Pickup, Delivery & Shipping
Or come in to our shop!

Best of the Berkshires 2020

Proud to support
world class
theater in the
Berkshires

