

# **BARRINGTON** STAGE COMPANY

JULIANNE BOYD, ARTISTIC DIRECTOR

AND  
Carla and Edward Slomin  
PRESENT

# **GASLIGHT**

BY  
Patrick Hamilton

FEATURING

**Ali Rose Dachis    Mark H. Dold    Kevin O'Rourke**  
**Kim Stauffer    Peggy Pharr Wilson**

SCENIC DESIGNER  
**Kate Noll**

COSTUME DESIGNER  
**Beth Goldenberg**

LIGHTING DESIGNER  
**Scott Pinkney**

SOUND DESIGNER  
**Joel Abbott**

HAIR & WIG DESIGNER  
**Anne Ford-Coates**

PRODUCTION STAGE MANAGER  
**Renée Lutz**

CASTING  
**Pat McCorkle, Katja Zarolinski, CSA**

BERKSHIRE PRESS REPRESENTATIVE  
**Charlie Siedenbug**

DIGITAL MARKETING  
**The Pekoe Group**

NATIONAL PRESS REPRESENTATIVE  
**Matt Ross Public Relations**

DIRECTED BY  
**Louisa Proske**

SPONSORED IN PART BY  
**Hildi and Walter Black & Esther and Dr. Robert Rosenthal**  
Student matinees sponsored in part by the Dobbins Foundation & Susan and David Lombard

STUDENT MATINEE TALKBACKS SPONSORED BY  
**Price Chopper/Market 32**

**GASLIGHT** is presented by special arrangement with SAMUEL FRENCH, INC.

**BOYD-QUINSON MAINSTAGE**  
**OCTOBER 4-22, 2017**

THE SHUBERT  
FOUNDATION INC.



## SETTING

New York, 1880's

## CAST

IN ORDER OF APPEARANCE

Mr. Manningham .....	Mark H. Dold*
Mrs. Manningham .....	Kim Stauffer*
Elizabeth .....	Peggy Pharr Wilson*
Nancy .....	Ali Rose Dachis*
Rough .....	Kevin O'Rourke*

## STAFF

Production Stage Manager .....	Renée Lutz*
Stage Management Fellow .....	Colin Nelson
Assistant to the Director .....	Flordelino Lagundino
Fight Choreographer .....	Ryan Winkles
Dramaturg .....	Rebecca Weiss
Charge Scenic Artist .....	Courtney Licata
Costume Shop Manager .....	Jessica Sovronsky
Stitcher .....	Trinity Melissa Koch
Props Master .....	A.J. Diggins
Master Electrician/Lightboard Operator .....	Elizabeth Roth
Audio Engineer/Soundboard Operator .....	Olivia Denison
Wardrobe Supervisor .....	Rosalie Ferris

## BSC STAFF

### ARTISTIC

Artistic Director .....	Julianne Boyd
Artistic Producer/Director of New Play Development .....	Branden Huldeen
Executive Assistant to the Artistic Director/Literary Associate .....	Rebecca Weiss

### ADMINISTRATION

General Manager .....	Maggie LaMee
Management Associate .....	Erin Tate
Office Manager/IT Administrator .....	Seth Peto
Controller .....	Martha Read

### ADVANCEMENT

Director of Advancement .....	Ashley Pirsig
Director of Institutional Giving .....	Martin Mansfield
Donor Relations Manager .....	Trevor Wise
Events & Volunteer League Assistant .....	Collette Simkins

## MARKETING & PUBLIC RELATIONS

Director of Marketing.....	Carol Chiavetta
Graphic Designer.....	Deirdre McKenna
Marketing Associate/Playbill Advertising Sales.....	Jennifer Graessle
Box Office Manager.....	Jessica Bush
Associate Box Office Manager.....	Elena Daskivich
Digital Marketing.....	The Pekoe Group

## EDUCATION

Director of Education.....	Tim Paré
Associate Director of Education/Director of Playwright Mentoring Project.....	Jane O'Leary
Education Coordinator.....	Philip Calabro

## PRODUCTION

Director of Production and Operations.....	Joseph F. Martin
Technical Director.....	Wil Deleguardia
Head Custodian.....	Ajama Mayes

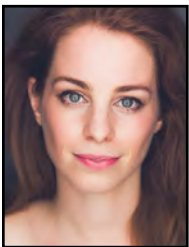
## SPECIAL THANKS

Sabine Boucher  
Shakespeare & Company  
Lucas Pawelski



\*Actors and Stage Manager are members of Actors' Equity Association.

## CAST



**ALI ROSE DACHIS (Nancy)** is excited to be making her Barrington Stage debut! She is a proud graduate of The University of MN/Guthrie, Theater BFA Actor Training Program. She made an artistic home at the Guthrie Theater appearing in many shows there. Favorites include *Circle Mirror Transformation*, *The Great Gatsby* and *The Edge of Our Bodies*. She is proud to have made her Broadway debut in Larry David's *Fish in the Dark*. She has worked at many wonderful New York and regional theatres including Baltimore Center Stage, Fault Line Theatre, The Children's Theatre Company and Cincinnati Playhouse in the Park. Ali is a proud volunteer with Artists Striving To End Poverty.



**MARK H. DOLD (Mr. Manningham)** 13 seasons at BSC from 2004-2017. Shows include: *Cyrano*, *The Importance of Being Earnest*, *Ring Around The Moon*, *Black Comedy*, *Private Lives*; *Laramie Project-Ten Years Later*, *Freud's Last Session*, *Much Ado About Nothing*, *Breaking The Code*; *Shining City*, *His Girl Friday*, *Love Letters*, *THIS* and *Gaslight*. Mark has worked at regional theatres from coast to coast. Most recently in *Cloud Nine* at Hartford Stage Company. He has appeared on and off Broadway. His on screen appearances include guest starring roles on *Person of Interest*, *Chicago P.D.*, every version of *Law & Order* including C.I. and *Dick Wolf's Conviction*, *Third Watch*, *Gossip Girl*, *It Could Be*

Worse, and many years recurring on *All My Children*. He has a Connecticut Critics Circle Award and a San Diego Critic Award. Mark is a graduate of Boston University and The Yale School of Drama, Carole Dye Award. He is a member of The Actors Center.



**KEVIN O'ROURKE (Detective Rough)** is thrilled to return to BSC after appearing in last season's *Camping with Henry and Tom*. He has performed on Broadway in *Cat on a Hot Tin Roof*, *Spoils of War* and *Alone Together*, as well as *The City of Conversation* at Lincoln Center, *Outside Mullingar* at The White Heron, *The Night Alive* at John Drew and productions at Manhattan Theatre Club, The Public, Second Stage, Playwrights Horizons, Roundabout, Long Wharf, Primary Stages and Williamstown Theatre Festival. TV/film credits include *Outsiders*, *Veep*, *Remember Wenn*, *Sopranos*, *Law & Order*, *Boardwalk Empire* (SAG award, ensemble) and the features *Vice Versa*, *The Aviator* and

*Freeheld*. As a director, Kevin staged the NY premiere of Abi Morgan's *Tender*, *Soldier* at HERE Arts Center, and *The Physicists* at Williamstown Theatre Festival. In 2005 he founded the Williams College Summer Theatre Lab and for 10 years served as its Artistic Director. He now lives full-time in Williamstown.



**KIM STAUFFER (Mrs. Manningham)** BSC: *A Streetcar Named Desire* and *The Crucible*. New York: *Much Ado About Nothing*, *Mary Stuart*, *Macbeth* (New York Classical Theatre) Regional: *Lady Windermere's Fan*, *The Tempest*, *Macbeth*, *Pericles*, *Lorenzaccio* (Shakespeare Theatre Company, DC); *Circle Mirror Transformation* (Kansas City Repertory Theatre); *Outside Mullingar*, *Taming of the Shrew* (Capital Repertory Theatre); *Madagascar*, *Crime and Punishment* (Chester Theatre); *Emilie: La Marquise du Chatelet Defends her Life Tonight* (WAM Theatre); *Dracula* (Actors Theatre of Louisville); *Othello* (Shakespeare Festival St. Louis); *Proof* (Triad Stage); *Time Stands Still* (New Century Theatre);

*A Christmas Carol* (Virginia Stage Company) Film/TV: *Hence the Stars*, *Pearl Divers*, *Small Shots: The Amish Matrix*. She holds an MFA from the University of North Carolina at Greensboro and teaches acting in the University at Albany Theatre Program.



**PEGGY PHARR WILSON (Elizabeth)** BSC: *His Girl Friday*, *The Crucible*, *To Kill a Mockingbird*, *Guys & Dolls*, *Carousel*, *Laramie Project: Epilogue*, *10 x 10 New Play Festival* (2012-17), several staged readings. BAT: *Aloysius in Doubt*. Shakes & Co: *Leap Year*. New York: *Six Women With Brain Death* (co-author and also performed it in Chicago, Dallas and Kansas City). Regional: 10 seasons with Creede Repertory Theatre in Colorado performing over 50 roles, including Mrs. Lovett in *Sweeney Todd* (Best Actress—Ovation Award Denver Post), *Shirley Valentine*, *Josie* in *Moon for the Misbegotten* and *Mac* in *3 Viewings*. Mrs. Jennings in staged reading of *Sense & Sensibility* for Berkshire Musical Theatre Workshop.

Many other regional productions including: Dallas Theatre Center, Theatre 3, Kansas City Rep, Unicorn, KC Lyric Opera, White River in Vermont and Rose Theatre in Chicago.

## CREATIVES

**PATRICK HAMILTON (1904-1962) (Playwright)** was born in Hassocks, Sussex in 1904. His

plays include the thrillers *Rope* (1929) – on which Alfred Hitchcock's film *Rope* was based – and *Gaslight* (1939), also successfully adapted for screen in the same year. Among his novels are *The Midnight Bell* (1929), *The Siege of Pleasure* (1932), *The Plains of Cement* (1934), a trilogy entitled *Twenty Thousand Streets Under the Sky* (1935), *Hangover Square* (1941) and *The Slaves of Solitude* (1947). He died in 1962.

**LOUISA PROSKE (Director)** BSC: *This, peerless* (nominated for Berkshire Theatre Award for Outstanding Direction), *Engagements*. Louisa directs classical theatre, new plays and opera with equal passion. Upcoming: *The White Devil* (Red Bull Theater). Opera productions include *Agrippina* (Lincoln Center debut), *Così Fan Tutte* (LoftOpera), *Carmen*, *Lucia di Lammermoor*, *Daphnis & Chloé* (Heartbeat Opera) and *Falstaff* (Dell'Arte Opera). Theatre productions include *One Day When We Were Young* (Assembly, Edinburgh), *'Tis Pity She's a Whore* (The Tank), Shakespeare's *Cymbeline* and *As You Like It* at Yale School of Drama and a European tour of *Macbeth*. She is Co-Artistic Director of Heartbeat Opera ("visceral, intimate and immediate" – *NYTimes*, "radical" – *The New Yorker*, "pioneers" – *The Wall Street Journal*) and teaches at Maggie Flanigan Studio. [Louisaproske.com](http://Louisaproske.com)

**JOEL ABBOTT (Sound Designer)** BSC: *Taking Steps*. Broadway Associate: *Present Laughter, The Humans*. Off Broadway Associate: *Napoli, Brooklyn* (Roundabout), *Prodigal Son* (Manhattan Theatre Club). Regional: *My Fair Lady* (Dir. Michael Arden, Bay St. Theatre), *Owners, In a Year With 13 Moons* (Dir. Robert Woodruff, Yale Rep), *Marcus; or the Secret of Sweet, Serial Blackface* (Actor's Express), *Baskerville, You Can't Take It With You, The Drowsy Chaperone, Spelling Bee, Boeing-Boeing, Blithe Spirit, Dames at Sea* (St. Michael's Playhouse), *Ave Q, Proof, Passing Strange, Wit, Little Shop of Horrors, [Title of Show], I Hate Hamlet, Angels in America: Millennium Approaches, A Moon for the Misbegotten, The Importance of Being Earnest* (Playhouse on Park). Training: Yale School of Drama.

**BETH GOLDENBERG (Costume Designer)** BSC: *Engagements*. New York: *The Changeling* (Red Bull); *The Other Thing, Engagements* (Second Stage); *Soldier X* (Ma-Yi); *God of Carnage, By the Way Meet Vera Stark, Sight Unseen, Cymbeline* (Juilliard). Regional: *The Christians* (Dallas Theatre Center); *Queens for a Year* (Hartford Stage); *Disgraced* (Asolo Rep); *Blueprints to Freedom* (La Jolla Playhouse, Kansas City Rep). Opera: *Macbeth, Stabat Mater, the little match girl passion* (Glimmerglass); *Carmen, Lucia di Lammermoor, Kafka's Fragments, Daphnis & Chloe* (Heartbeat Opera); *Agrippina* (Juilliard). MFA, NYU/Tisch. [Bethgoldenbergdesign.com](http://Bethgoldenbergdesign.com)

**KATE NOLL (Scenic Designer)** is a New York City based set designer. Recent credits include *Carmen* (Heartbeat Opera), *peerless* (Marin Theatre Company), *Agrippina* (Juilliard), *Così Fan Tutte* (LoftOpera), *Xerse* (Yale Baroque Opera), *Orange Julius* and *Utility* (Rattlestick), *I and You* (TheatreSquared), *Stones in his Pockets* (Shanghai Dramatic Arts Center), *Accidental Death of an Anarchist* (Yale Rep, Berkeley Rep – nominated for a Connecticut Critics Circle Award), *In a Tilted Place* (IRT Theater), *Gordy Crashes* (Ricochet Collective), *Kristina* (August Strindberg Rep), *This Lingering Life* (HERE), *The Fatal Eggs* (Fractured Atlas) *Ermynturde & Esmeralda* (Ars Nova), *Gloria – A Pig Tale* (New York Philharmonic), *Cloud 9* (YSD). She is a graduate of RISD and Yale School of Drama. [katenoll.com](http://katenoll.com)

**SCOTT PINKNEY (Lighting Designer)** BSC Associate Artist returning for his fourteenth season. Past designs include *This, American Son, Scott & Hem, Best of Enemies, The Crucible, Whipping Man, Carousel, A Streetcar Named Desire* and *Follies*. Broadway: Harvey Fierstein's

Tony Award-winning *Torch Song Trilogy*. Off Broadway: *Vincent, Becoming Dr. Ruth, Majestic Kid, Divine Fire* and *The World is Made of Glass*. Regional: *Ulysses On Bottles* (Israeli Stage—IRNE Nomination), *Don Juan* (Denver Center—Denver Critics Circle Award), *Comedy of Errors* (Commonwealth Shakespeare—Elliot Norton Award), *Balkan Women* (BRT—Barrymore Nomination) and *My Fair Lady* (TheatreVirginia—Phoebe Award). International: Singapore Rep and Club Mohamed-Ali in Cairo. Scott is a Professor at Emerson College. [slpinkney.com](http://slpinkney.com)

**ANNE FORD-COATES (Hair & Wig Designer)** Broadway: Makeup design for *Frozen, A Bronx Tale, On Your Feet!, Disaster!, On The Twentieth Century, It Shoulda Been You*. Selected recent designs: hair & makeup for *Silent Night* (Atlanta Opera), *Dead Man Walking* (Washington National Opera), *The Wolves* (Playwrights Realm), *The Guilty Mother* (On Site Opera), *Káťa Kabanová* (Juilliard). Hundreds of productions for American and international opera companies: highlights include *Lost in the Stars* (Glimmerglass Festival), *The Music Man* (Royal Opera House Muscat, Oman), Phillip Glass' *Appomattox*, Wagner's *Ring Cycle* and *Daughter of the Regiment* featuring Justice Ruth Bader Ginsburg as the Duchess of Krakenthorp (Kennedy Center).

**RENÉE LUTZ (Production Stage Manager)** Over 55 productions for BSC including *Company, Ragtime, American Son, Tribes, Sweeney Todd, Man of La Mancha, Cabaret, Follies*, etc. Recent credits: *Skin of Our Teeth* (directed by Arin Arbus) and *Pericles* (directed by Trevor Nunn; Theatre for a New Audience). Credits include: *Merchant of Venice* (directed by Darko Tresnjak—both national tour and the Royal Shakespeare Company), *Hamlet* (directed by Darko; Hartford Stage), ART, New York Public Theatre, Playwrights Horizons, Manhattan Theatre Club, Signature, Classic Stage, Vienna Festwochen, BTF, Yale Rep., Coconut Grove, etc. Her very best credit and longest run is her husband, actor Gordon Stanley.

**MCCORKLE CASTING LTD; PAT MCCORKLE, KATJA ZAROLINSKI (Casting) (C.S.A.)** Casting actors for Barrington Stage for 15 years. Pat McCorkle is pleased to be an Associate Artist at BSC. Broadway: Over 50 productions including *On the Town, Amazing Grace, End of the Rainbow, The Lieutenant of Inishmore, Cat on a Hot Tin Roof, One Flew Over the Cuckoo's Nest, Amadeus, She Loves Me, A Few Good Men*. Off Broadway: highlights – *Clever Little Lies; Sheer Madness; Tribes; Our Town* (Barrow Street); *Freud's Last Session; Toxic Avenger; Almost, Maine; Driving Miss Daisy*. Feature film: *Premium Rush, Ghost Town, The Thomas Crown Affair, Die Hard with a Vengeance, School Ties*, etc. Television: *Twisted, St. George, Sesame Street, Hack, Californication, Max Bickford, Chappelle's Show, Strangers with Candy, Barbershop*, etc. [mccorklecasting.com](http://mccorklecasting.com)

**CHARLIE SIEDENBURG (Berkshire Press Representative)** joined the Barrington Stage family in 2005 and has represented over 80 BSC productions. His work has led to features in *The New York Times, The Wall Street Journal, The Boston Globe, USA Today* and *American Theatre Magazine*. He began working as a publicist in 1990 at the Barn Theatre in August, MI, working with folks like Marin Mazzie and Tom Wopat. His many PR credits include the Metropolitan Opera (Live in HD), Paper Mill Playhouse (1999-2004), George Street Playhouse, Hartford Stage, Goodspeed Musicals, Long Wharf Theatre and Two River Theatre Company. Charlie is personal publicist to Broadway's Leslie Kritzer and Patrick Page. Charlie serves as National Press Rep for Chautauqua Theater Company, Project Shaw, SurfFlight Theatre and Wagner College Theatre. Charlie is a 1995 Theatre/Arts Administration graduate of Wagner College on Staten Island, where he currently teaches Theatre Appreciation.

# **GASLIGHTING: PSYCHOLOGICAL MANIPULATION AND BULLYING- THE DISTURBING TREND IN RELATIONSHIPS TODAY**

**FREE SYMPOSIUM**  
**SUNDAY, OCTOBER 15**  
**BOYD-QUINSON MAINSTAGE**  
**1:00-2:30 PM**

*Gaslight* serves as a perfect backdrop for a discussion about realistic strategies for combating psychological manipulation and bullying.

**FREE! Call our Box Office to make a reservation: (413) 236-8888**

## **ABOUT OUR PANELISTS:**

**Michelle Bienvenue**, MSW, LICSW. School Adjustment Counselor in the Pittsfield Public Schools.

**Mike Dreiblatt**, President of standuptobullying.net, an organization that provides specific and helpful information on all types of bullying prevention to students, teachers, and parents.

**Andrew J. Gerber**, MD, PhD, Medical director/CEO of the Austen Riggs Center in Stockbridge, Massachusetts, associate clinical professor at the Child Study Center at Yale University.

## **Student panelists:**

**Nathaniel Beaupre** and **Laura Pfeiffer** are seniors at Taconic High School.

Sponsored in part by  **THE BERKSHIRE EAGLE**

## **BSC'S MISSION**

**Co-founded in 1995 by Artistic Director Julianne Boyd, Barrington Stage Company (BSC) is a not-for-profit professional theatre company in the Berkshires (MA) with a three-fold mission: to produce top-notch, compelling work; to develop new plays and musicals; and to find fresh, bold ways of bringing new audiences into the theatre, especially young people.**

## **HISTORY**

Barrington Stage Company is the fastest growing arts venue in Berkshire County, attracting more than 56,000 patrons each year. BSC continues to gain national recognition for its superior quality productions and comprehensive educational programming.

Barrington Stage has produced several award-winning plays and musicals, beginning in its inaugural year with *The Diary of Anne Frank*, which won the Elliot Norton/Boston Theatre Critics Award. In its third year, BSC won two Elliot Norton/Boston Theatre Critics Awards and four Outer Critics Awards for its smash hit production of *Cabaret*, which moved to Boston and played an extended run at the Hasty Pudding Theatre. Several other BSC productions, including *Lady Day at Emerson's Bar and Grill*; *Mack and Mabel*; *The 25th Annual Putnam County Spelling Bee*; *Follies*; *West Side Story*; *Freud's Last Session*; *Sweeney Todd*; *Best of Enemies*; *Breaking the Code* and *On the Town* have been named among the top 10 productions of the year in many area newspapers – leading The Boston Globe to laud BSC as “one of the jewels in the state's crown.”

**This past season Barrington Stage won 20 out of 25 Berkshire Theatre Awards, the first annual theatre awards in Berkshire County, with the majority of the awards going to Barrington's productions of *American Son*, *The Pirates of Penzance* and *Broadway Bounty Hunter*.**

## AND THEN TO BROADWAY....

Barrington Stage gained national prominence in 2004 with the world premiere of *The 25th Annual Putnam County Spelling Bee*, by William Finn and Rachel Sheinkin. The musical, a runaway hit at Barrington Stage, later moved to Broadway and won two Tony Awards. In June 2013, BSC produced Leonard Bernstein, Comden and Green's *On the Town*, directed by John Rando and choreographed by Joshua Bergasse. It received across-the-board rave reviews, with Ben Brantley of *The New York Times* writing, “Normally, I wouldn't tell citizens of the five boroughs to drive three hours to be told that New York is a helluva town. But this enchanted vision of a city that was—and of course never was—is worth catching...” A Broadway production opened in October of 2014 to rave reviews. The show received four Tony nominations, including Best Musical Revival.

## A PERMANENT HOME

In its first 11 years, BSC operated from rented space at the Consolati Performing Arts Center at Mount Everett High School in Sheffield, MA. BSC used a high school auditorium as their Mainstage space, and two cafeterias as makeshift theatres, one for their Stage 2 (where *The 25th Annual Putnam County Spelling Bee* premiered) and the other for their Youth Theatre. In July 2005, BSC purchased a 1912 vaudeville theatre in downtown Pittsfield and presented their first season in 2006 in the partially renovated space (with only the orchestra available for seating). By June 2007, BSC opened its doors to a completely renovated 520-seat, state-of-the art theatre now known as the Boyd-Quinson Mainstage.

In the spring of 2012, BSC purchased the former V.F.W. building in Pittsfield, three blocks from the Boyd-Quinson Mainstage. The building, now called the Sydelle and Lee Blatt Performing Arts Center in honor of the BSC patrons who made the purchase of the building possible, houses the 114 seat St. Germain Stage and Mr. Finn's Caba-



ret, a 99-seat cabaret space in the lower level of the building.

In the summer of 2016, Barrington Stage's campus grew once again, with the acquisition of 122 North Street, now called the Wolfson Center, after BSC patrons Jessie and Bernie Wolfson, who made the purchase possible. In May of this year BSC's administrative offices, rehearsal rooms and costume shop moved to the Wolfson Center, giving Barrington a prime location in downtown Pittsfield.

BSC has become an integral part of downtown Pittsfield's economic revitalization. In 2009 the Massachusetts Cultural Council presented a "Creative Community" Commonwealth Award to the City of Pittsfield in recognition of its efforts to boost the

---

---

## ANNUAL FUND

**Barrington Stage Company is extremely grateful for the generous support of individuals, corporations, foundations & government agencies to our Annual Fund.**

**We would like to thank the following:**

**Producing Partner Circle \$50,000+**

Heather Nolin & Herbert A. Allen  
Sydelle & Lee Blatt

The Claudia & Steven Perles Family Foundation

Mary Ann & Bruno A. Quinson  
The Shubert Foundation

**Artistic Circle**

**\$25,000-\$49,999**

Carole & Dan Burack  
Bonnie & Terry Burman  
Judith Goldsmith  
The Green Foundation  
Sherwood & Carol Guernsey  
Norma & Sol Kugler  
Massachusetts Cultural Council  
Cynthia & Randolph Nelson

**Visionary \$10,000-\$24,999**

Anonymous  
Drs. Judith & Martin Bloomfield  
The Deann Dylandale Foundation  
Reba & Bruce Evenchik  
The Feigenbaum Foundation, Inc.  
Isanne & Sanford Fisher  
Esta & Kenneth Friedman  
Audrey & Ralph Friedner  
Anne & Lawrence Frisman  
Ann & John Galt

Marita & David Glodt

Diane Troderman & Harold Grinspoon

Joan & Jim Hunter

Leslie & Stephen Jerome

Arnold Kotlen

Hal Kramer

Rhoda & Morris Levitt

Susan & David Lombard

Dan Mathieu & Tom Potter and Max Ultimate Food

Lyn & Robert Petricca

Sheila & Harold Richman

Dr. Robert & Esther Rosenthal

Debra Miersma & David Russell

Jude Sabot

Rosita Sarnoff & Beth Sapery

Carrie & David Schulman

Laurie & Martin V. Schwartz

Marvin Seline

Edward & Carla Slomin

Roz & Charles Stuzin

Ted\* & Jean Weiller

Hermine Drezner & Jan Winkler

Shirley & Ira Yohalem

Robert & Karen Youdelman

Cheryl & Michael Zaccaro

**Director \$5,000-\$9,999**

Anonymous  
Alpern Family Foundation

Alpern-Rosenthal Foundation Fund

Jody & John Arnhold

Dr. Stephanie Beling

Hildi & Walter Black

Gregory & Tatiana Callimanopulos

The Dobbins Foundation

Event Illuminations

The Fairbanks Family

Charitable Foundation

Renee & Steven Finn

Francis Investment Consulting Group, Inc.

Suzan Grandt & Stanley Kaplan

Martin & Judy Isserlis

Nancy & Morris W. Offit

Lawrence & Bette Sue

Rosenthal

Alan Sagner

Jodi & Paul Tartell

Anne & William Tatlock

Laurie & David Tierney

Edward & Linda Wacks

Dr. Art & Terry Wasser

Richard M. Ziter M.D.

**Founder \$2,500-\$4,999**

Jadwiga & Donald Brown

Kathleen & Neil Chrisman

The Gregory E. Bulger

Foundation/Gregory Bulger & Richard Dix

Herman Goldman Foundation

In honor of Judith Goldsmith by her family

Dr. & Mrs. William Hajjar

Madeline & Ian Hooper

Loretta & Michael Kahn

Liz & George Krupp

Clara Londoner

Barbara & Kenneth Mahler

Diane & Darryl Mallah

Carol & Al Maynard

John McLean & Heather Lane

Donald & Nancy Osborne

The Charles L. Read Foundation

Donna & Jerry Weiss

**Leader \$1,000-\$2,499**

Anonymous (2)

Len & Fran Alexander

Mark & Carolyn Ain

Nancy Ashen in memory of Frank Z. Ashen\*

Dr. Norman Atkin & Ms. Joan Schwartzman

Timi & Gordon Bates

The Benevity Community Impact Fund

Barnett & Anne Berch Foundation, Inc.

Helene Berger

Robert Bildner & Elisa Spungen Bildner in honor  
of Syd & Lee Blatt

Susan & Duncan Brown

Ricki Gardner & William Cavanagh

Anthony & Susan Cook

Susan Henshaw Jones & Richard Eaton

Barbara Cutler Emden & James B. Emden

Barri Marks & Woody Exley

Mike & David Faust

Beth & Richard Fentin

Dr. Craig Fischer & Donna Ferriere

William Finn & Arthur Salvatore

The Frederick H. Gillmore Fund

Florence & Michael Freedman

Jill & Harold Gaffin

Dr. Donald & Phoebe Giddon

Edythe Gladstein in honor of Rhoda Herrick\*

Midge Golin

Donna & Bob Goodman Fund

Naomi & Roger Gordon

George & Eileen Greene

Patti & Louis Grossman

J. Ryan Gunsalus

Hickrill Foundation

Ronald & Miriam Hinds

Michele & Stephen Jackman

Lola Jaffe

Richard & Athena Kimball

Wendy Laurin & Jeff Konowitch

Dorothy & Neil Koreman

Steve & Dale Kulvin

Mark & Taryn Leavitt

Marvin & Helaine Lender

Adam Irick & Milton Lestz Gerry & Sheri Lublin

Paula M. Lustbader

Adam & Beth Man

Amy & Jeff Mann

Jon & Rosemary Masters

J.H. Maxymillian, Inc.

Joseph Francis McDonald

Alice McInerney  
 Nancy McIntire  
 Martin Messinger  
 Edie Michelson & Sumner Milender  
 Estelle Miller  
 Steven Roy Narker  
 Suzanne F. Nash  
 National Alliance for Musical Theatre  
 Linda & Robert Noonan  
 Roberta Olsen  
 Nancy Orovitz  
 Diana Hitt Potter  
 Fred & Judy Robins  
 Sheryl Rosenfield & Rita Glassman  
 Georgeanne & Jean Rousseau  
 James Ruberto  
 Milton B. & Ruth A. Rubin Philanthropic Fund  
 Debra Jo Rupp  
 Vicki & Bruce Safran  
 Jeffrey Leppo & Marjorie Safran  
 Mrs. Wynn A. Sayman  
 Raquel & Michael Scheck  
 Jane & Martin Schwartz  
 Carol & Marvin Schwartzbard  
 Betsey & Mark Selkowitz  
 Mark & Hally Shaw  
 Mary D. Silverman  
 Marion & Leonard Simon Fund  
 St. Germain Investment Management  
 Ken Stark in memory of  
 Lynn Jack & Amy Tobin  
 Phyllis Topchik  
 Loet\* & Edith Velmans  
 Harry & Karen Waizer  
 Arleen & Shelley Weiner  
 Reid & Laird White  
 Mr. & Mrs. Robert G. Wilmers  
 Susan & Geoffrey Woglom  
 Ray Ellen & Allan Yarkin

**Benefactor \$500-\$999**

Stephanie & David Abramson  
 Anonymous  
 Michael Apstein & Dee McMeekan  
 Saida & Woody Baxt  
 Marty & Glenna Bloom  
 Phyllis Brown

Nancy & William Burstein  
 Mary Carswell  
 Iris & Mel Chasen  
 Ursula & Walter Cliff  
 Jayne & Herb Cohan  
 Phil & Ann Colburn  
 Jeff Davis  
 Joseph Deleo in honor of  
 Rosita Sarnoff & Beth Sapery  
 Roberta McCulloch-Dews & Warren Dews, Jr.  
 Cory & Bob Donnalley Charitable Foundation  
 John & Janet Egelhofer  
 Mr. & Mrs. Marjorie Elson  
 Nancy & Fred Fagelman  
 Nancy Feldman & Mike Chefetz in honor of  
 Isanne & Sandy Fisher  
 Gerald Fine  
 Flannery Family Fund  
 David & Ellen Flatow  
 Judith Schuchalter & Albert Gordon  
 Cassandra Gordon  
 Roberta Greenberg  
 Dorthea Greene & Linda Morse  
 Dustin & Gale Griffin  
 Judith & Bruce Grinnell  
 Renee Gross  
 Karen & Werner Gundersheimer  
 Sheila & Barry Halpern  
 Scott & Ellen Hand  
 David A. Harris  
 Maureen & Paul Hickey  
 Enid Hoffman  
 George Hyman  
 Linda & Burton Imberman  
 Carol & George Jacobstein  
 Phyllis (Patti) & Harvey Klein  
 Joan & Paul Kopperl  
 Joyce & Richard Lacatell  
 Joyce & Jim Lapenn  
 Shirley & William Lehman  
 Joy M. Licht  
 Pamela & Don Lichty  
 Gloria Luria  
 Vivien G. Malloy  
 Shirley & Jay Marks  
 Jaqueline & Jaan Metsma  
 Bonnie Schur & Sid Meyers

Teresa & Martin Monas  
Katherine & John Morris  
Thomas & Elaine W. Neely  
Mary Ellen & John O'Connor  
Sharon & Irving Picard  
Penny & Claudio Pincus  
Marguerite & Reid Pitts  
Michael M. Premisler  
C. C. Raymond  
Mickey & Norman Resnick  
Antonio G. Revilla  
Nataly & Toby Ritter  
Jeffrey & Karen Ross  
Rich & Karen Rowe  
Rosalie & David Schottenfeld  
Abby Schroeder  
Kathy & Joel Segall  
Rita & Harvey Simon  
Robert & Caryl Siskin  
Robert & Jacqueline Spielman  
Lauren Spitz  
Barbara & Eugene Trainor  
Gay G. Tucker  
W.P. Stewart & Co. Inc. Foundation  
Al & Muriel Wermuth  
Jill A. Wollins

**Angel \$250-\$499**

Denyse & Harold Adler  
Helen & Michael Apton  
Barry S. Berg  
Carole & Richard Berkowitz  
Dr. Sam & Lynn Berkowitz  
Berkshire Taconic Community Foundation  
Eva & Jean Paul Blachere  
Ed Bonfield & Emily Zuckerman  
Ann Appelbaum & Neal Borovitz  
Marlene M. Brager  
Michael C. Brook, Ph.D.  
Debra & James Buslik  
James N. Cawse & Maria Rapetti Cawse  
Lynn Villency Cohen & Stephen Cohen  
Bobbi & Mike Cohn  
Linda Benedict Colvin  
Ann & Tom Connolly in honor of  
Mary Ann Quinson  
Jim Mahon & Paula Consolini

Jan & Lloyd Constantine  
Linda G. Conway  
Lynn & Joseph Cooper  
Tandy Cronyn  
Martha & Milt Dalitzky  
Eugene Dellea  
Jamie deRoy  
Kathleen & George Desmarais  
Sophie & Lee Dichter  
Thomas Dillon  
Tony & Jamie Dobrowolski  
Gilbert & Norma d'Oliveira  
Margaret "Peg" Downing  
Terry & Melvyn Drucker  
Ellen & Thomas Ennis  
Phyllis Epstein  
Laura & Phil Fidler  
Floriana & John Fitzgerald  
Margaret & Howard Fluhr  
Michael S. Luongo & Stephen Foreman  
Diane Forsyth  
Randall & Ellen Frank  
Bud & Ellie Frank  
Myra Friedman  
Pam & Dave Furth  
Julie Diamond & Herb Ginsburg  
Alan & Rita Sue Gold  
Marilyn & Alan Gordon  
Mr. & Mrs. Howard Gorham  
Lainie Grant & Matt Larkin  
Ruth & Larry Hennefeld  
Eliza Hewat  
Susie & Stuart Hirshfield  
Dr. & Mrs. Fred Hochberg  
Gerri Holt  
Larry & Jackie Horn  
Ruth Houghton  
Jennifer Howlett  
Harriet & Elihu Inselbuch  
Arlene & Harry Jaroslaw  
Judy & John Kittredge  
Myra & Bill Kleinman  
Susan & Edward Kopelowitz  
Richard & Nedra Koplin  
Saranne & Livingston Kosberg  
Susan & Ken Kramer  
Leonard Kulick & Razal Robbins

Joe Wheaton & Richard Lipos  
Dr. & Mrs. Ben Liptzin  
Edward & Joan Mahler  
Gretchen Mann & Camp Half Moon  
Marcia Brady Tucker Foundation  
Andrea Marks & David Warmflash  
Suzanne Marvin  
Fern & Joseph Mayer  
Lorinda Ackley Mazur & Thomas Mazur  
Barbara McCullough  
Maureen & John McFeely  
Nancy & Alan Milbauer  
Alice & Alan Model  
Nina Molin, MD & Jon Gotterer, DMD  
Charlies & Judith Myers  
Judith A. Walter & Irvin B. Nathan  
Judith Neidenberg  
Stanley J. Okula, Jr.  
Sarah Frank & Andy Olesker  
Ann & Al Oppenheim  
William Packard  
Elaine & Fred Panitz  
Flora & David Perskie  
Carol & Mark Pollard  
Qualprint Foundation Fund  
F. Peter & Mary Rentz  
Laurie & Al Richman  
Wendy H. Robbins  
Raymond J. Deangelo & Martin B. Rosen  
Leonard & Elizabeth Rosenfeld  
Laura Rosenthal  
Diana & Michael Rothenberg  
Sue Z. Rudd  
Kay & Parvis Sadighi  
Yumiko Saito  
Susan Fisher & Gary Schieneman  
Steven & Paula Schimmel  
Kenneth & Nancy Sewall  
Hannah & Walter Shmerler  
Robert & Roberta Silman  
Barbara & Ed Sirkin  
Margie & Michael Stern  
Kate H. Stiassni  
Claudine Chavanne & Harry Stuart  
Lois & David Swawite  
Dorothy E. Swimmer  
Jonathan Swartz

Frances Taber  
Susan C. Thompson  
David Topchik  
Debra Toppeta  
Alexandra Warshaw  
Judy & Larry Weber  
Emily Aber & Robert Wechsler  
Louise & Steven Weinberg  
Willoughby Fund  
Dr. & Mrs. Stephen Wittenberg  
Lauren & Clifford Wohl  
David Wood  
Irwin & Judy Wrubel  
Carol & Robert Zimmerman

**Friend \$100-\$249**

Judith Aaron  
Donna M. Abbott  
Deborah & Fred Abeles  
Margaret Ackerman  
Jean Adelson  
Richard Ades  
Therese & David Allen  
Marsha Altschuler  
Anonymous (6)  
Joel Appelbaum  
Gary Apruzzese  
Jim Armstrong  
Judge & Mrs. Jeffrey M. Atlas  
Steve & Judy August  
Ilene & Mike Baron  
Mary Ann Bascom  
Robert & Barbara Bashevkin  
Evalyn & Joseph Basloe  
Nancy & David Bayer  
Sandra Becker  
Leslie Bedford & Frank Upham  
Pam & Mark Beiderman  
Robert & Ilona Bell  
Jo Bellomo  
Alan & Judith Benjamin  
Shelley & Robert Berend  
Daniel & Phillipine Berkenblit  
Alison & Edward Bermant  
Ellen J. Bernstein  
Steven Bert  
Nancy & Samuel Billard

Barbara Bilyeu  
Robin & Sheldon Birnhak  
John & Melissa Bissell  
Noel A. Blagg  
Dianne & Michael Blau Charitable Fund  
Ilene & Lester Bliwise  
Stephanie & Carl Bradford  
Conlin Bradley  
Moses & Jane Brand  
Jane Barus  
Joel Dancingfire Brehm  
Allen & Irene Brill Philanthropic Fund  
Judy & Simeon Brinberg  
Helman & Judy Brook  
Jeri & Daniel Buehler  
Dr. Johnel D. Bushell  
Debra Butler  
Catherine & Paul Buttenwiser  
Ben Calev  
Mark & Elaine Cancilla  
Gerard Caprio  
Mary Jo Carpenter  
Isabell Carr  
Susan & Joel Cartun  
Sarah S. Chadbourn  
Ann & Harris Chandler  
Pauline & Howard Clark  
Craig G. Clemow  
Barbara & Mark Cohen in honor of Esta & Kenny  
Friedman  
Edward B. Cohen  
Jane & Andrew Cohen  
Raquel & Lewis Cohen  
Barbara & Roger Coleman  
Judith & Jeffrey Cook  
Barbara & Robert Covell  
Patricia Davis  
Amy Dean  
Brenda & Jerome Deener  
Nicole Deller  
Deighna DeRiu  
Dery Funeral Home  
Carol Diamond  
Sharon & George Dickerman  
Linda & Dan Dillon  
Gerald & Joanne Dreher  
Terry & Mel Drucker in honor of

Jessie & Bernie Wolfson  
Stephen & Ruth Dube  
Josh Dubin  
Rodney Dugas  
James Dumont  
Riva Edelman  
Bonnie & Alvin Edelstein  
Robert Maloy & Sharon Edwards  
Janet Eisenstein  
Paul Engel  
Laurily Epstein  
Tad Evans  
Wendy Federer  
Diana & Stanley Feld  
Rosalyn Feldman  
Audrey & Ed Ferman  
David & Lea Finck  
Gerald Fine  
Jim & Pat Fingeroth  
Irving & Ilene Fish  
Barbara & John Flynn  
Mark E. Kasuba & Kathleen Flynn-Kasuba  
Roz Forman  
Joan Fortgang  
Christopher M. Foster  
Kenneth & Linda Frank  
Joanna & Ellis Fribush  
Barbara & Mark Friedman  
Jacqueline Del Rossi & Lewis Friedman  
Laura & Bob Friedman  
Joan & Egon Fromm  
Maryjane & Jerry Fromm  
Louise Simmons & Robert Funck  
Stephanie & Arthur Gilbert  
Sylvia D. Gingras  
Ruth & Peter Giordano  
Barbara Glasser  
Maxine A. Goldblum  
Dr. Jacob & Myrna Golden  
Marjorie & Leonard Goldstein  
Martha Golub  
Rhonna & Ezra Goodman  
Sheila C. Gordon  
Kinnie & Jerry Gorelick  
Barry Waldorf & Stanley Gotlin  
Judith H. Gott  
Michael Gottfried

Grand Classroom  
Suzanne Graver  
Carol & Joel Greenberg  
Eric & Phyllis Greenberg  
Michael A. Greenberg  
Lenore Greenstein  
Thomas & Jill Groff  
Carol B. Grossman  
Patricia Gurevich  
Myrna & Alden Hammerling  
Hamovit Family Philanthropic Fund  
Bernardine & Melvin Handler  
Debroah Balmuth & Colin Harrington  
William Harris  
Dr. Bernard & Mrs. Deborah Harris Doris &  
Al Hartheimer  
Marilyn Haus  
Susan & Raymond Held  
Daniel Heller  
Marnie Henneman  
Anne & Nelson Hershman  
Mimi & Ken Heyman  
Ann W. Hilliard  
Arthur S. Hillman  
Harvey & Cathy Homan  
Robert & Lynne Horvath  
Barbara & Theodore Horwitz  
Carol Travers Hoyda  
Byron C. Huse  
Marilou & John Hyson  
Harold & Elaine Isaacson  
Michelle Jackman  
Malinka Jackson  
Esta & Norman Jacobskind  
Bruce Jonas  
Susan & Gordon Josephson  
Drs. Monica & Allen Joslin  
Adina Judovin  
Eric Kahn  
Nancy K. Kalodner  
Joel & Jane Kamer Charitable Gift Fund  
Louise Kaminow  
Rita A. Kane  
Dorothy & David Kanter  
Wendy T. & Martin S. Kaplan  
Annbeth Katz  
Judy Katz

David Katz  
Alan S. Kaufman  
Katherine & John Keenum  
George & Patty Kellar  
Katherine Shanahan Kennedy  
Ruth & Paul Keppler  
Joan G. Kinne  
Howard & Anita Kleinbaum  
Rick & Carolyn Koch  
Marilyn & Ronald Kohn  
Linda K. Kopec  
Roy Korins & Gillian Zackham  
Naima Kradjian  
Allen M. Krieger  
Harvey & Barbara Krohn  
Marcia & Mal Krupitsky  
Stephen Kurcias  
Barbara & Fred Lafer  
Pat & Fred Lamarca  
Nancy & Gary Lamoureaux  
Barbara Lane  
Janet L. Lapierre  
Mr. & Mrs. Judy Lederer  
Robert B. Lee  
Albert C. Leizman  
Bonnie & Joel Lester  
Chris Atkins & Lauren Letellier  
Edward M. & Marjorie B. Levin  
Raquel & Lear Levin  
Amy & Alan Levine  
Gloria & Mitchel Levitas  
Gerald Levy  
Pommy & Jerry Levy  
Phyllis & Joel Levy  
Barbara & Mitchell Lipcon  
Nancy & Norman Lipoff  
Jill C. Littrell  
Kathleen Quinn & James Lortsher  
Tracy Lowry  
Michael A. Lucido, Esq.  
Ann Ludwig  
Dr. Susan T. Mahler  
Iris & Ron Maitland  
Arnie & Ronnie Malasky  
Jayne & Charles Maller  
Barbara E. Mandler  
Manhattan Theatre Club

Judy & Don Marcus  
Alissa P. Margulies  
Denise & Howard Marshall  
Judith & Andrew Matthews  
Nomi Colton-Max  
Judith Mayberry  
Elaine & George McCabe  
James & Helen McCarthy  
Dorothy Rivkin & Richard McGriff  
Barbara & Kenneth McLennan  
Theresa McMahon  
Janet Brady & Douglas McNally  
Kerry F. Meehan  
Gary Melton  
Andrea & Fred Mensch  
Gordon & Antigone Merritt  
Marsha S. Michel In memory of Harriet Miller  
Robert Misch  
Wendy Jennis & Douglas Mishkin  
Arthur & Leslie Mones  
Joann Monk  
Tina Monteleone  
Bruce Moore & Michael Alper  
Karen Moore  
Alexandra Moreira  
Jan & Harold Moskowitz  
Mr. & Mrs. James Murray  
Judith & Alex Nardacci  
Jill & Hank Narrow  
Mr. & Mrs. Charles P. Nastro  
Helene & Larry Natinsky and Madeleine Kreitman  
Coreen Nejjame  
Jody & Harold Nelson  
Bobbie & Leon Nesis  
Judith Nevins  
Clark Nicholls  
Trudy Whitman & Alan Nisselson  
Robert Windsor Norris  
Jessica Olefson  
Mark Oppenheimer  
Gerald Padwe  
Stephen & Constance Pajeski  
Mary & Richard Palmer  
Daniel & Marcia Parnell  
David Parry  
Dr. Richard Pasternak  
Carol Patterson

Susan G. Pearson  
Erin Peck  
Jane & Larry Pellish  
Sharon Perlman  
Christian H. Pfister  
Ann & Marty Phillips  
Marie Pindus  
Ashley Pirsig  
Letty Cottin Pogrebin  
Dr. & Mrs. Galen Politis  
Marjorie & Miles Pollack  
Charles Popper  
Edward & Anamaria Prenskey  
Robyn & Robert Prizer  
Roberta Probbler  
Frances & Donald Putnoi  
Don & Nora Quadrozzi  
John & Donna Quallen  
Kathleen Quinn & James Lortsher  
Mr. & Mrs. David Quinlan  
Irma & Bob Race  
Michael Ramella  
Julie Raskin  
Sharon & Paul Raverta  
Carolee Reiber  
Janice & Joel Roberts  
Adrienne & Harvey Robins  
Lesley & Martin Robins  
Brenda Robinson  
Adele P. Rodbell  
Martha Rosen  
Stuart & Suzanne Rosen  
Judith & Aaron Rosenberg  
Sabina & Alex Rosenblum  
Ahava Rosenthal  
Kenneth Ross  
Alice & Donald Roth  
Deborah Roth  
Dr. Janet & Mr. David Rothstein  
Ellen & Peter Rowntree  
Marlene & Howard Roy in honor of  
Amy Mann  
Lenore & Jack Rubin  
Drs. Nina & Robert Rubin in honor of  
Sheila Richman  
Russell Family Charitable Fund  
Jean Ryan



Robert Salerno  
Barbara Saltzman  
Linda Sambel  
Sandra Samdperil  
Ellsworth M. Sammet  
Pamela Sandler A.I.A.  
Dr. & Mrs. Stuart Sandrew  
Stanley Friedman & Terri Schiffrin  
A Von Schlegell & Company  
Alvin & Myrna Schneiderman  
Andrea Schroeder  
Barbara Schulman  
Sue Schulman  
Harriet Schweitzer  
William & Susan Seely  
Roberta Seidman  
Adrea Seligsohn  
Adele & Michael Serber  
Helen-Mary Shaffer  
Harriet & Hal Shair  
Les & Arline Shalan  
Leslie & Stephen Shatz  
Anne & Barry Sheridan  
Enid Michelman & Arthur Sherman  
Barbara & Bruce Shickmanter  
Gene Bauer & Ellen Shortell  
Richard W. & Pam C. Siegel  
Mr. & Mrs. Marshall Sigel  
Dr. Robert & Phyllis Silbert  
Gail & Leonard Silverman  
Paul & Ellen Silverstein  
Florence Sinsheimer  
Stanley Skriloff  
William Slack  
MB Slaminsky  
Joseph C. & Alice K. Small  
Turbi Smilow  
Mundi & Syd Smithers  
Matthew Smyth  
Norman Solomon, M.D.  
Donald & Nancy Sommer  
Adrienne & Matthew Speed  
Janis & Jeff Sperber  
Maureen & Jack Sprano  
Edith Springer  
Mimi & Steve Stambler  
Vivian Steinberg

Abbe & Peter Steinglass  
Tamara & Jeffrey Stevens  
Donald Dwyer & Beverly Stewart  
Martha & Ron Stewart  
Tuesday Club of Stockbridge  
Judy Stolzberg  
Gail Street & Anita Stuart  
Ann Ghublikian & Margaret Sullivan  
Richard Sussman  
Alice Swersey  
Ellen & Leonard Tabs  
Jeffrey & Susan Tannenbaum Dan &  
Michlyne Thal  
Susan C. Thompson  
J. Rebecca & Michael C. Thompson  
Jerry Tiffany  
Mr. & Mrs Steven Tobin  
Bagels Too  
John Toole  
Tosk Chiropractic  
Daltrey Turner  
Elise Udelson  
William E. Briggs & Donald Usher  
Peter & Ann Usher  
Dr. & Mrs. George Vazakas  
Barbara Vinitz  
Dr. Matie L. Flowers & Dr. Joseph R. Visalli  
Leslie Warren  
Lawrence Strauss & Francine Weinberg  
Steven Wendt  
Kerry Adams & Douglas White  
Arthur J. Wichman  
Myra & Warren Widmann  
M. Jane Williams  
Jamie & Lois Williamson  
Dee & Frank Wind  
Barbara Winslow  
Nancy & Raymond Woitkowski  
Estelle & Jacob Wolansky  
Judith & George Youngman  
Judy & Manny Yvars  
Robin Chapman & Will Zarwell  
Christine & Ray Zelehoski  
Jan & Harvey Zimble  
Sherry & Jeffrey Zuckoff

**Supporter \$50-\$99**

Anonymous (8)  
John Anzalotti  
Iris Bass  
Lynda Battleman  
Michele Bauer  
Barbara & Malcolm Bayliss  
David H. Beers  
Burton Benjamin  
Alyce & Paul Bernstein  
Esther & Seymour Birnbaum  
Norman Black  
Dr. & Mrs. Stanley Bogaty  
Carolyn & Nelson Bonheim  
Irving Brown  
Esther & Jack Budnick  
Pamela Burger  
Loius Camarato  
Justyna & Gene Carlson  
Frances & Louis Carrozza  
Morton Certilman  
Dr. Childsy Art  
Jennifer Clark  
Joseph M. Clement  
Kathleen Mele & John Coffey  
Richard & Elizabeth Colten  
Naomi & Martin Cramer  
Fran & Linda Curley  
Todd Daiuto  
Olga D'Angelo  
Lorita & Clyde Decorie  
Ian Dee  
Bonita Desrosiers  
Nicole & Paul Desrosiers  
Susan Diamond  
Linda J. Docherty  
Nathan Doctrow  
Judy & Mark Drucker  
Leslie Effman  
Charlotte & Jesse Ellman  
Michael & Joanne Esposito  
Paula Farbman  
Alan & Judy Feldman  
Phylis Fink  
Ruthann & Herbert Fish  
Camilla & Joseph Flemming  
Joanne & Philip Freedman

Betty M. Furman  
Anne & Robert Gagnon  
Terry Gamer  
Alfred & Kathleen Garofolo  
Barbara Gerver  
John Gillespie  
Kathleen Glasberg  
Harriet & Martin Glassman  
Barbara Gold  
David Goldblatt  
Mark Goldfus  
Evelyn & Bertram Goldstein  
Florence Goodman  
Judith Schuchalter & Albert Gordon  
Carol Anne Ances & Burton Grad  
Carole Greenfield  
Joan Grinell  
Andrea Beth Grumbine  
Suzanne & Gary Gulbranson  
Hope Hagler  
Frank & Rosalee Halik  
Albert Leizman & Ann Harte  
Lee & Jo Ann Hauge  
Jerry & Barbara Hayden  
Ed & Cindy Helitzer  
Peter S. Heller  
Ernest Helmke  
Professor Patricia Higham  
Allen & Stephanie Hochfelder  
Bill & Karen Hogan  
Alan Horbal  
David A. Hosokawa  
Berkshire Mountain House  
Marge & Rusty Van Houten  
Chris Ischay  
Abby & Eric Jablin  
Bill T. Jeonotte  
Judith & Maurice Joseph  
Barbara Kalnins  
Fran Karger  
Ben & Susan Kasper  
Armand & Gloria Katz  
Mary & Robert Kavanaugh  
Janet Kelfer  
Judy Kelly & Paul Stramese  
Arthur Kessler  
Harriet & Leon Klein

Arthur Kline  
 Kristen Mary-Martha Koob  
 Susan & David Kopelman  
 Paul & Marcia Kreindler  
 Margaret Kronenberg  
 Marjorie & Michael Kurcias  
 David & Joyce Lack  
 Rose Marie Ladley  
 Barbara Lagergren  
 Kathleen Lee  
 Dorothy & Harvey Lerner  
 Cecily Levine  
 Katherine Levitan  
 Rita & Philip Levy  
 Bennett & Deborah Liebman  
 Arthur Lifton  
 Stephen & Zelda Litwin  
 Madeline & Martin Litz  
 Karen Ludington  
 Claire Lyons  
 Jonathan Abbott & Shari Malyn  
 Alice Nathan & Irving Marks  
 Helena D. Matthews  
 Anthony J. Mazzaschi  
 Lorraine Anne McLaughlin  
 Ronald & Susan B. Milch  
 Macey Levin & Gloria Miller  
 Richard Miskinis  
 Michael F. Mitri  
 Eleanor Montgomery  
 Michael J. Moran  
 Linda Morgenlander  
 Leslie Morris  
 John & Beryl Nadeau  
 Alice & Manny Nadelman  
 Joan Nemiroff  
 Susan T. Newman  
 Raelene Noll  
 Dennis & Joanne Olson  
 Karen O'Neil  
 Lesley Oransky  
 Judith Paldy  
 Rosamond & Ronald Pietras  
 Frieda & Neal Pilson  
 Barbara J. Porter  
 Diane & Arthur Provenz  
 Judith Reichert

Margo Golos-Reines  
 Ingrid Richardson  
 Margot & Jack Robinson  
 Myrna Rodkin  
 J. Roper  
 Mimi Rosenblatt  
 Doris & Lester Rothman  
 Robyn Roth-Moise  
 Sandy & Paul Rothstein  
 Sandra & Alan Rubin  
 Mr. & Mrs. Stephen Ruchman  
 Norma Ruffer  
 Jane Ryan  
 Diane & Lee Saltzberg  
 Hubert & Susan Salvini  
 Joan & Alain Sasson  
 Diane Saunders  
 Jules Schapiro  
 Anne & Marc Schechter  
 Beverley & Ramon Scheer  
 Steve & Judy Scher  
 Alice & David Schiff  
 Bernie & Shellie Schneider  
 Joe Schwartz  
 Joseph & Joanna Schwartz  
 Richard & Laurel Scialabba  
 Rose Scotch  
 Elenore Selin  
 Bernice & Irwin Shainman  
 Barbara & Ted Shiffman  
 Elizabeth Shogry  
 Michael Simon  
 Richard & Marcie Greenfield Simons  
 Vicky Singer  
 Laurie Singer  
 Carla & Robert Skidmore  
 Deborah & H. Ashley Smith  
 Jewel & Larry Smith  
 Barbara K. Snyder  
 Betsy & Fred Sokol  
 Joan & Louis Soloway  
 Florence & Irwin Speyer  
 Pamela & Edmund R. St. John III  
 Rabbi Arthur & Linda Starr  
 Robert Stern  
 Susan Stiefel  
 Lianne Stofsky

Sheila Stone

William & Rose Ann Sturgeon in memory of

Charles C. Siedenburg

William & Rose Ann Sturgeon

Susan & Alex Sussman

Matthew Thomases

Lutitia B. Tibbetts

Joseph & Nancy Tirrell

Susan & Jules Titelbaum

Lora & Sigmund Tobias

Joan & Richard Toder

Judith Tucker

Mark & Laura Urken

Vivia E. Veasey

Dr. Deborah Verlen

George Wachtell

Gary & Sheila Wakoff

Howard & Nancy Waxman

Pat & George Webb

Inez S. Weinstein

Barbara & Mel Wolff

## **MATCHING GIFT FOUNDATIONS**

Aetna Foundation, Inc.

Alliance Bernstein

Chevron Humankind

Exxon Mobil Foundation

The GE Foundation

I.B.M.

MassMutual Financial Group

## **EDUCATION DONORS**

### **Artistic Circle \$25,000+**

Berkshire United Way

Feigenbaum Foundation, Inc.

Greylock Federal Credit Union

Leon Lowenstein Foundation, Inc.

### **Visionary \$10,000-\$24,999**

AVANGRID, Inc.

Berkshire Bank Foundation

The J.M. Kaplan Fund

The Peter F. & Mary W. Levin

Philanthropic Fund at Interact for Change

MCC YouthReach Grant

### **Director \$5,000-\$9,999**

Joan & Jim Hunter

Judith & Richard Jacobs

The Estate of Ruth I. Krauss

Edie Michelson & Sumner Milender

Mary Ann & Bruno A. Quinson

Deborah & William Ryan

Stephanie & Richard Solar

Kathi & John Thonet

### **Founder \$2,500-\$4,999**

Sydelle & Lee Blatt

Kathleen & Neil Chrisman

Monroe England

Isanne & Sanford Fisher

Audrey & Ralph Friedner

Judith Goldsmith

Lyn & Robert Petricca

TD Bank North

Cheryl & Michael Zaccaro

### **Leader \$1,000-\$2,499**

Hildi & Walter Black

Tony Chojnowski

Reba & Bruce Evenchik

Esta & Kenneth Friedman

Marita & David Glodt

James I. & Marla Greenfield

Diane Troderman & Harold Grinspoon

Renee Gross

Marianne & Richard Jaffe

Lenox Educational Enrichment Fund

Pamela & Don Lichty

Debra Miersma & David Russell

Ann & Don Morrison

Ann & Don Morrison in memory of

Edwin (Ted) Weiller III

Linda & Robert Noonan

Michelle & Perri C. Petricca

Rod Pleasants

Randi Rossignol

Rotary Club of Pittsfield

James Ruberto

Rosita Sarnoff & Beth Sapery

Carrie & David Schulman

Laurie & Martin V. Schwartz

Carol & Richard Seltzer

Seven Towns' Educational Enrichment Program

Elaine & Ben Silberstein

Dr. Sheila Terens

Art & Terry Wasser

Dr. & Mrs. Jerry Weiss

Shirley & Ira Yohalem

Robert & Karen Youdelman

**Benefactor \$500-\$999**

Adams Cheshire Educational Partnership

Rebecca Blatt Thonet

Paula M. Consolini & James Mahon

Linda Conway

William Drosehn

Barbara Cutler Emden & James Emden

Nancy Feldman & Mike Chefetz

Francis Investment Consulting Group, Inc. in appreciation of Sheila Richman

Stephanie & Bob Gittleman

Wendy & Peter Gordon

David A. Harris

Kathleen & Al Jaffe

Veverly & Andrew James

Julia B. Kaplan

Susan & Edward Kopelowitz

Harold L. Kramer

Steve & Dale Kulvin

Ellen & Mark Levy

Amy & Jeff Mann

Lyn & Ron Mason

Kate & Joel Millonzi

Carolyn & Eli Newberger

Philip Oppenheimer

John Rando

Sheila & Harold Richman

Mssr. J. Capizzi & G. Riddell

Esther & Dr. Robert Rosenthal

Martin Ross

Kay & Parvis Sadighi

Sandi Stern

Dr. Art & Terry Wasser

Write Angles

Estate of Jerome R. Zipkin

**Angel \$250-\$499**

Tessa Kelly

Norma & Irving Kronenberg

Sheila & Wallace Lehman

Raquel & Lear Levin

Roberta McCulloch-Dews & Warren Dews, Jr.

Elaine & Steve Mack

Arthur & Barbara Myers

Chris Parkinson

Carol & Michael Riordan

Peggy Rivers & Van Shields

Barbara & Michael Rosenbaum

Mark Rosengren

Lawrence & Bette Sue Rosenthal

Max Rossignol

Elizabeth Stanley

Joan & Errol Stoltz

Tamara Tunie

Eleanore Velez

**Friend \$100-\$249**

Anonymous

Ursula Ehret-Dichter

Denise Glasser

Laurie & Harold Gustin

**Supporter \$50-\$99**

Lenore & Claude Frank

Sunset/Sunrise B&B

**CAPITAL CAMPAIGN**

**\$500,000+**

Jessie & Bernard Wolfson

**\$100,000-\$499,999**

Anonymous

Rhoda & Morris Levitt

**\$50,000-\$99,999**

Sydelle & Lee Blatt

Hal Kramer

Massachusetts Cultural Council

**\$10,000-\$49,999**

A.J. Schnopp Jr., Construction Company, Inc.

Berkshire Bank Foundation

Blueline Design, Inc.

David Russell

**\$5,000-\$9,999**

Judith Goldsmith  
Roz & Charles Stuzin

**\$2,500-\$4,999**

Joan & Jim Hunter  
Arnold Kotlen  
Norma & Sol Kugler  
Rhoda & Morris Levitt  
Carol & Al Maynard

**\$1,000-\$2,499**

Anonymous (2)  
Carole & Dan Burack  
Ann & John Galt  
Leslie & Roy Kozupsky  
Madeleine Kreitman  
Sue Lipson

MCLA: Massachusetts College of Liberal Arts

Marian & Marshall Raser  
Esther & Dr. Robert Rosenthal  
Martin Ross  
Marcia & Albert Schmier  
Laurie & Martin V. Schwartz  
Zelda & John Schwebel  
Carol & Richard Seltzer  
Kathi & John Thonet  
Jamie Williamson & Bill Marley

**\$500-\$999**

George & Kathy Desmarais  
Esta & Kenneth Friedman  
June Guertin  
Marcie & Fred Imberman

**\$250-\$499**

Elaine & Danny Katz  
Jane W. Present

**\$100-\$249**

John & Margaret Anthony  
Howard & Pauline Clark  
Linda & George Diehl  
Gordon & Susan Josephson  
Judy & Richard J. Miller  
Judy & Stuart Nevins  
Michael J. Nichols in honor of Tim Pare  
Dana Harrel & Daniel Roemer  
Norman Solomon, M.D.

**\$50-\$99**

Bob & Tina Cooper  
Lenore & Claude Frank  
Julia Kaplan  
Mr. & Mrs. Jay Marks in memory of  
Tina Dawn Prenskey  
Lawrence Strauss & Francine Weinberg  
Mary Jo & Erik Van Der Kaay

---

All donors listed in this playbill include gifts from May 1, 2016–September 13, 2017.  
We apologize for any missed gifts due to an earlier cut-off date.

Every attempt has been made to ensure accuracy.  
Please notify us of any name corrections or discrepancies by contacting Ashley Pirsig at  
(413) 499.5446 x110 or APirsig@BarringtonStageCo.org.

Thank you.

\*Denotes deceased

## BOARD OF TRUSTEES

Mary Ann Quinson, *Chair*  
Marita O' Dea Glodt, *President*  
Julianne Boyd, *Artistic Director*  
Rosita Sarnoff, *Vice President*  
Sydelle Blatt, *Secretary*  
Ira Yohalem, *Treasurer*

Carole Burack | Bonnie Burman | Warren Dews, Jr. | Reba Evenchik  
Ralph Friedner | Sherwood Guernsey | Arnold Kotlen | Rhoda Levitt  
Robert Petricca | Sheila Richman | Robert K. Rosenthal, M.D. | David Schulman  
Laurie Schwartz | Mark St. Germain | Roz Stuzin | David Tierney  
Eleanore Velez | Robert Youdelman | Michael Zaccaro

## BOARD EMERITI

Kathleen Chrisman | Marilyn "Mike" S. Faust | Jeananne Hauswald Harris  
Marcie Imberman | James M. Lamme III | James A. Lapenn  
Heather Nolin | Roberta Olsen | Jude Sabot  
Marion Simon | Richard Solar | Reid White | Eileen Young



## AN EVENING OF PURE JOY MONDAY, NOVEMBER 13, 2017

Join us at the historic Friars Club for a **ONE NIGHT ONLY** cabaret featuring our remarkable community of artists that call both Broadway and **Barrington Stage** home.

**JEANNETTE BAYARDELLE** (*The Color Purple*, *Company*), **ELLEN HARVEY** (*Present Laughter*, *Company*), **LAUREN MARCUS** (*Company*), **KYLE DEAN MASSEY** (*Pippin*, *The Pirates of Penzance*), **JEFF MCCARTHY** (*Urinetown*, *Man of La Mancha*), **ANASTACIA MCCLESKEY** (*Waitress*, *Broadway Bounty Hunter*), **ANNE L. NATHAN** (*Once*, *Ragtime*), **WILL ROLAND** (*Dear Evan Hansen*, *The Black Suits*), **MICHAEL RUPERT** (*Falsettos*, *Presto Change-O*), **SCARLETT STRALLEN** (*A Gentleman's Guide to Love and Murder*, *The Pirates of Penzance*), **WILL SWENSON** (*Waitress*, *The Pirates of Penzance*) and more.

For more information please contact Collette Simkins, Events Assistant, at 413-499-5446 x125 or CSimkins@BarringtonStageCo.org.



**Price  
Chopper.**

**MARKET**  
BY PRICE  
CHOPPER

*and the Arts*

**FOOD FOR THE BODY  
AND THE SOUL**



[www.pricechopper.com](http://www.pricechopper.com)